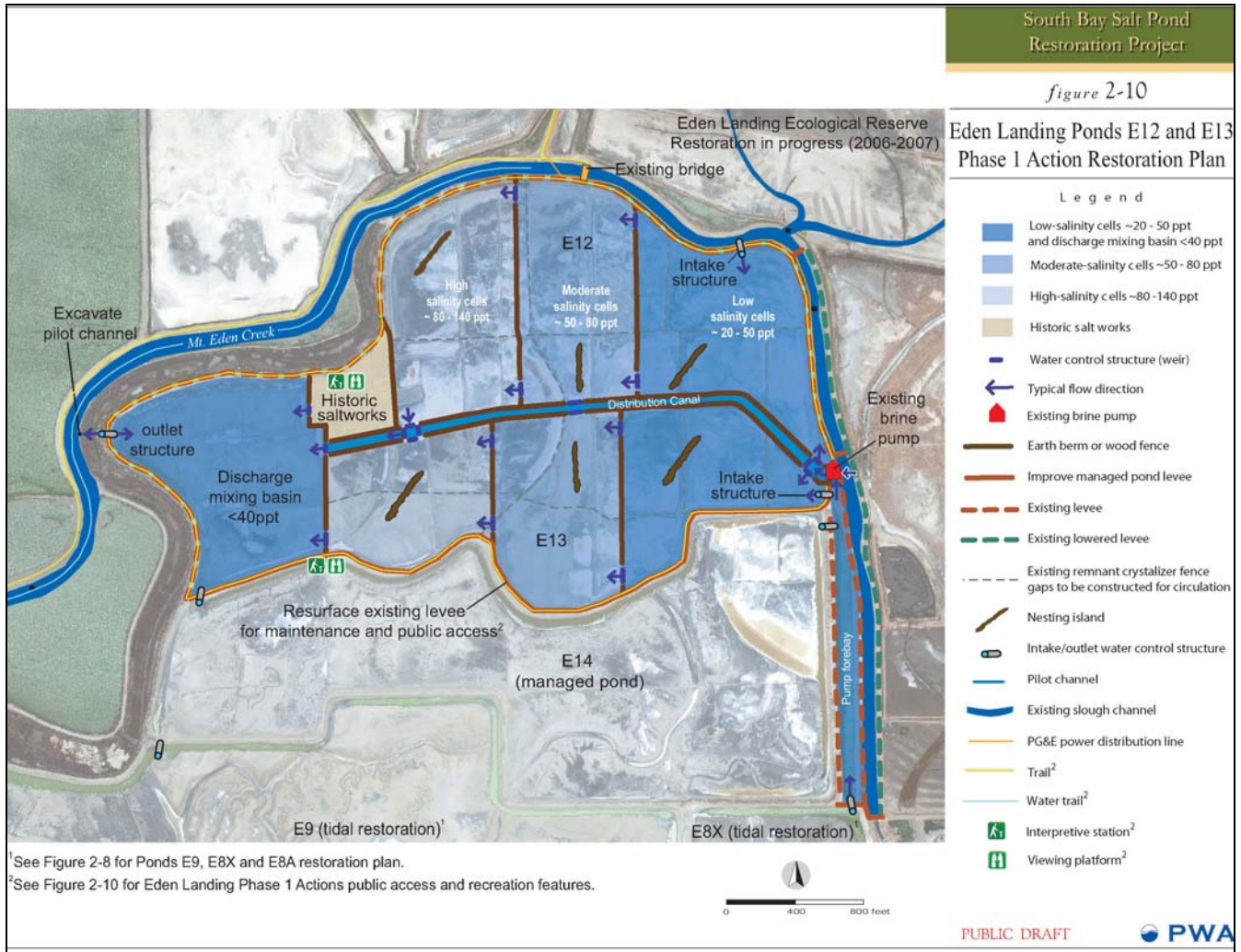


EDEN LANDING PONDS E12 AND E13 HANDOUT (July 23, 2007)



Restoration Area: 230 acres

Number of Cells: 6

Estimated Cost (construction & adaptive management): \$6 Million

Phase 1 Restoration Actions: The Eden Landing Ponds E12 and E13 would be reconfigured to create shallow water foraging habitat for migratory shorebirds, with a range of salinities, and a limited number of islands for nesting bird habitat.

Phase 1 Applied Studies:

- 1) Determining the extent to which focused management of shallow water habitats can increase migratory shorebird densities;
- 2) Determining the importance of salinity on the density of foraging shorebirds and their prey as applied studies; and
- 3) Testing techniques for vegetation management, predator management, and water and salinity management.