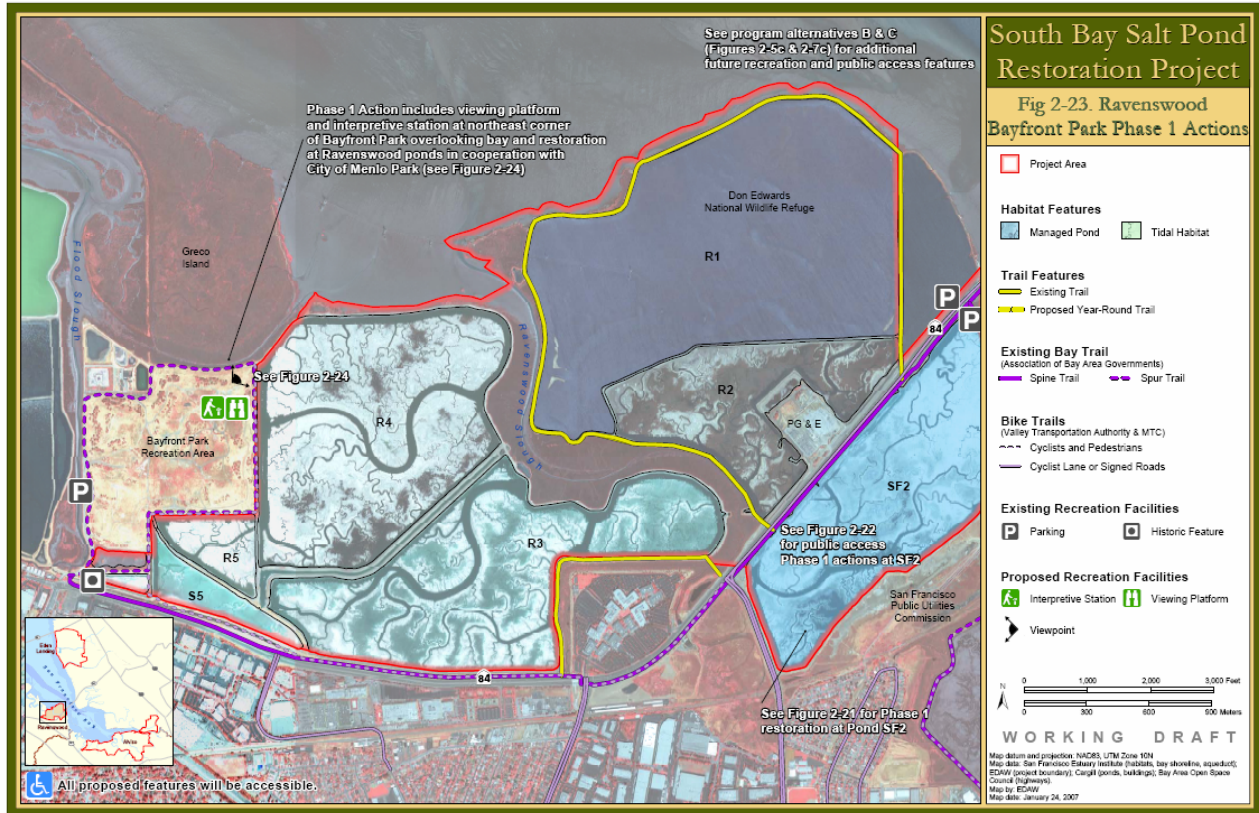


BAYFRONT PARK OVERLOOK

Draft July 10, 2007



Public Access Overview: The viewing platform at Bayfront Park would be constructed in partnership with the City of Menlo Park and would be located at one of the highpoints in the Park that provides a great vantage point to view Greco Island as it meets Pond R4. Currently the Park contains many trails but signage along existing trails would direct visitors to an at-grade viewing platform and interpretive station to describe the process of creating a functioning tidal marsh at Pond R4 such as is seen at Greco Island. The interpretive station would have a view portal, educational symbols and storyboarding, constructed of a combination of wood and steel and sized based on the site location.

Estimated Cost (construction & adaptive management): \$100,000

Issues: Effects on birds, management and maintenance

Applied Studies Questions: Will trails and other public access features / activities have significant negative effects on wildlife species?