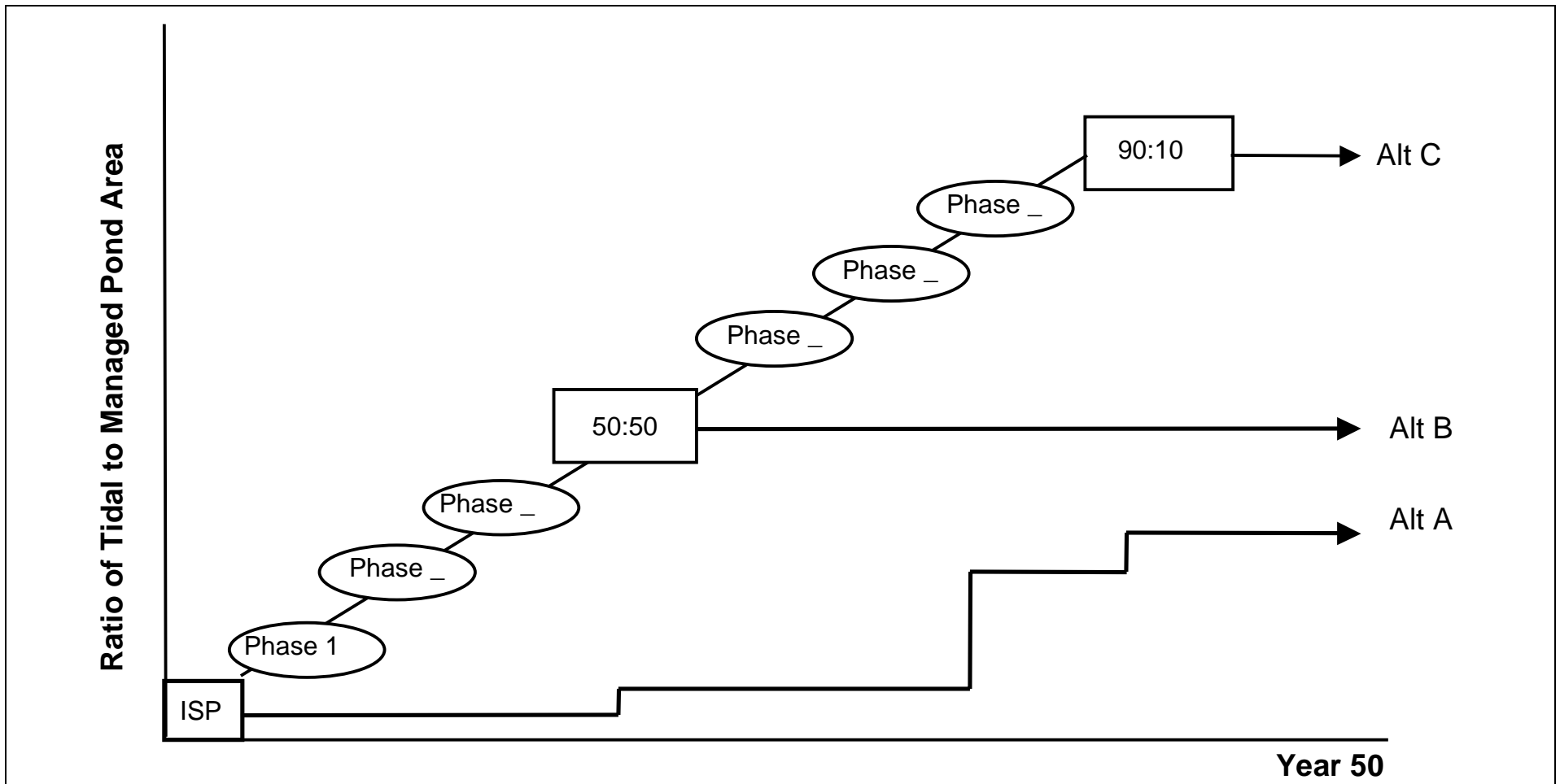


figure 6

South Bay Salt Pond Restoration Project

Adaptive Management Process





ISP = Initial Stewardship Plan

figure 7

Note: The number and timing of phases after Phase 1 are not defined at this time. The "stairstep" evolution of Alternative A reflects periodic unplanned pond breaches; no specific timing or magnitude of these breaches is implied.

South Bay Salt Pond Restoration Project

How Adaptive Management Informs the Ultimate Tidal & Managed Pond Habitat Mix



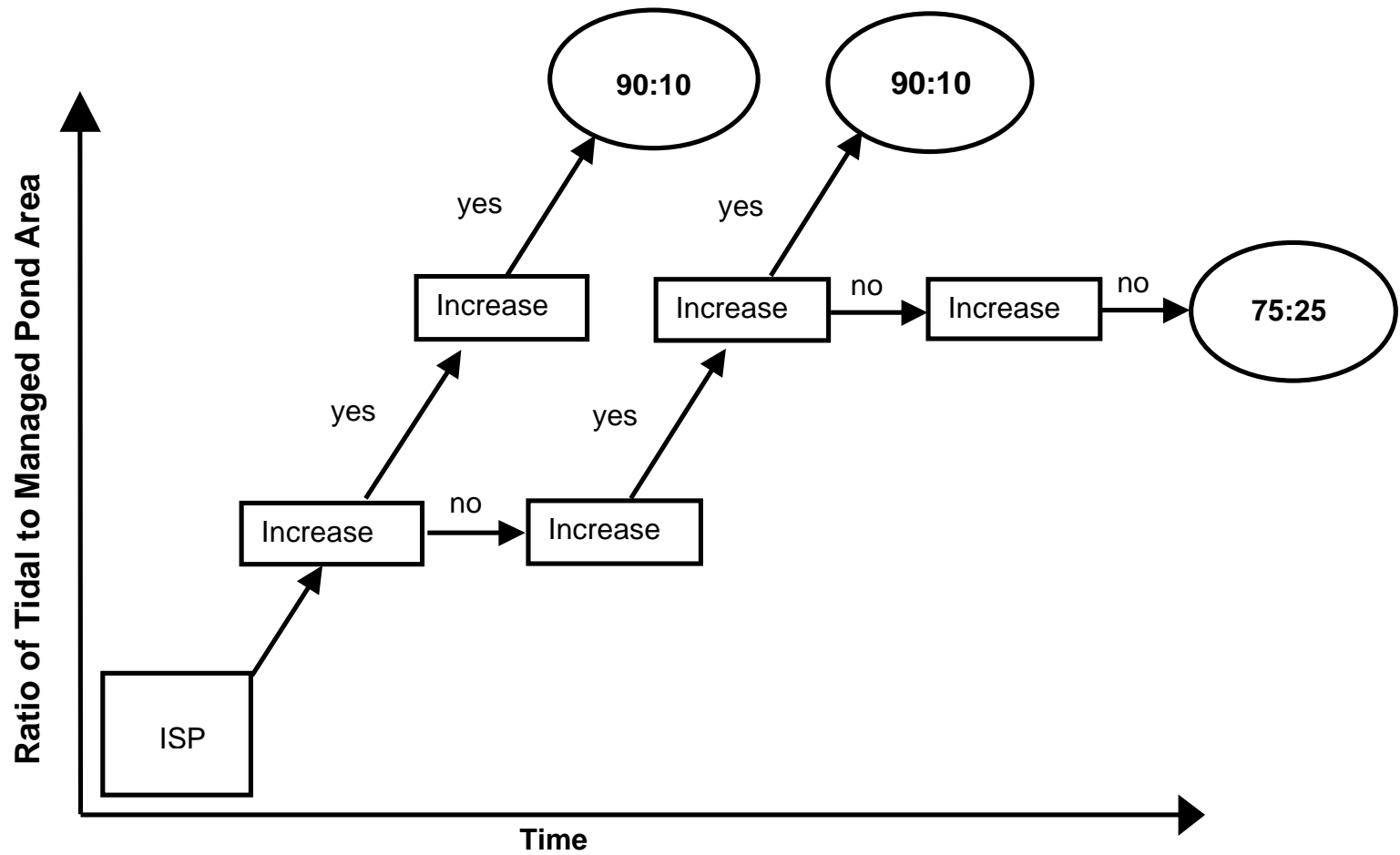


figure 8

South Bay Salt Pond Restoration Project

Example of How Adaptive Management Decisions Affect Phasing and Endpoint of Habitat Mix

