

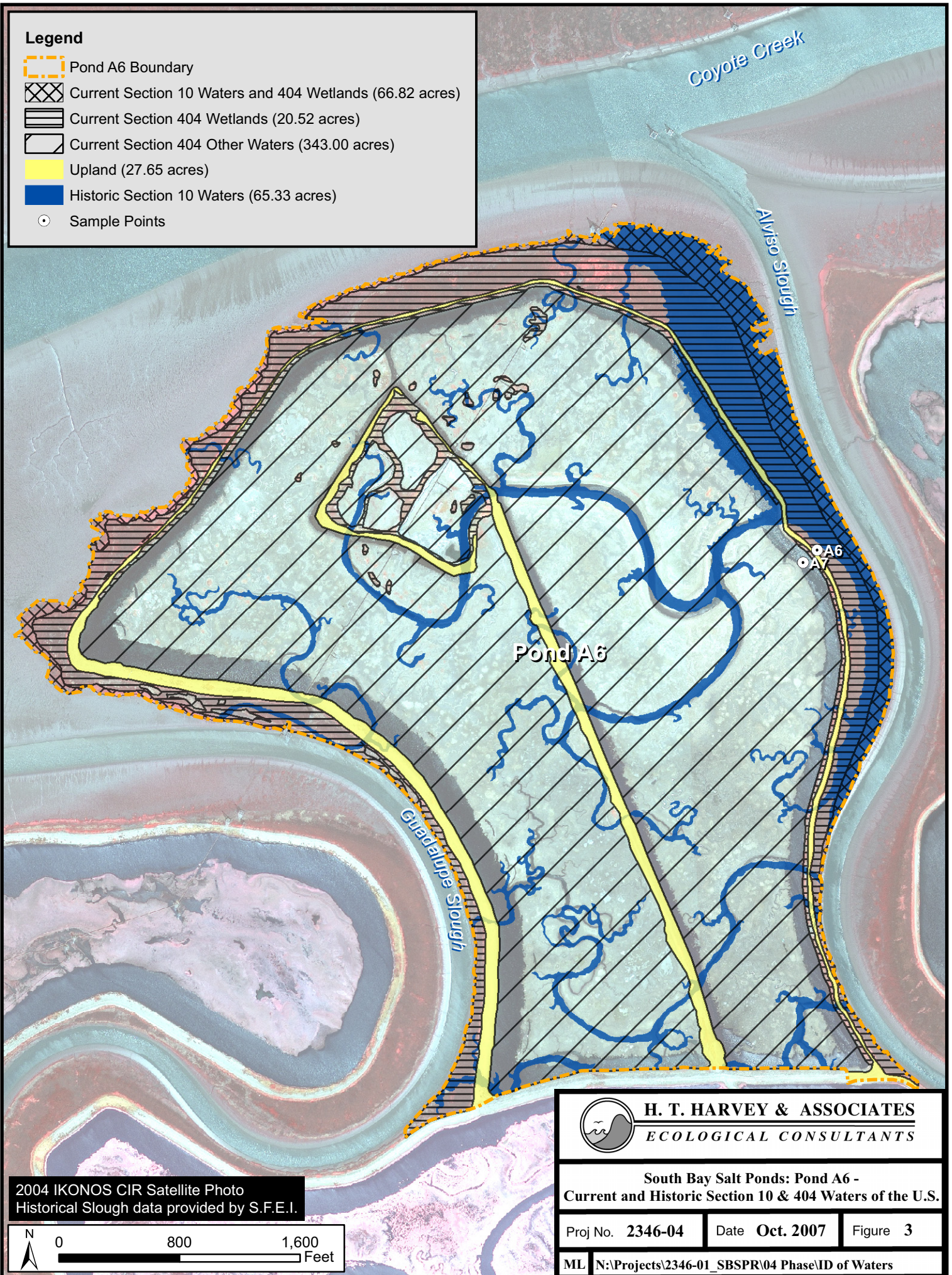


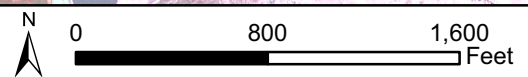
IKONOS CIR Satellite Photos: May 2004
 Provided by the City of San Jose

Legend

-  Pond A6 Boundary
-  Current Section 10 Waters and 404 Wetlands (66.82 acres)
-  Current Section 404 Wetlands (20.52 acres)
-  Current Section 404 Other Waters (343.00 acres)
-  Upland (27.65 acres)
-  Historic Section 10 Waters (65.33 acres)
-  Sample Points



2004 IKONOS CIR Satellite Photo
Historical Slough data provided by S.F.E.I.



H. T. HARVEY & ASSOCIATES
ECOLOGICAL CONSULTANTS

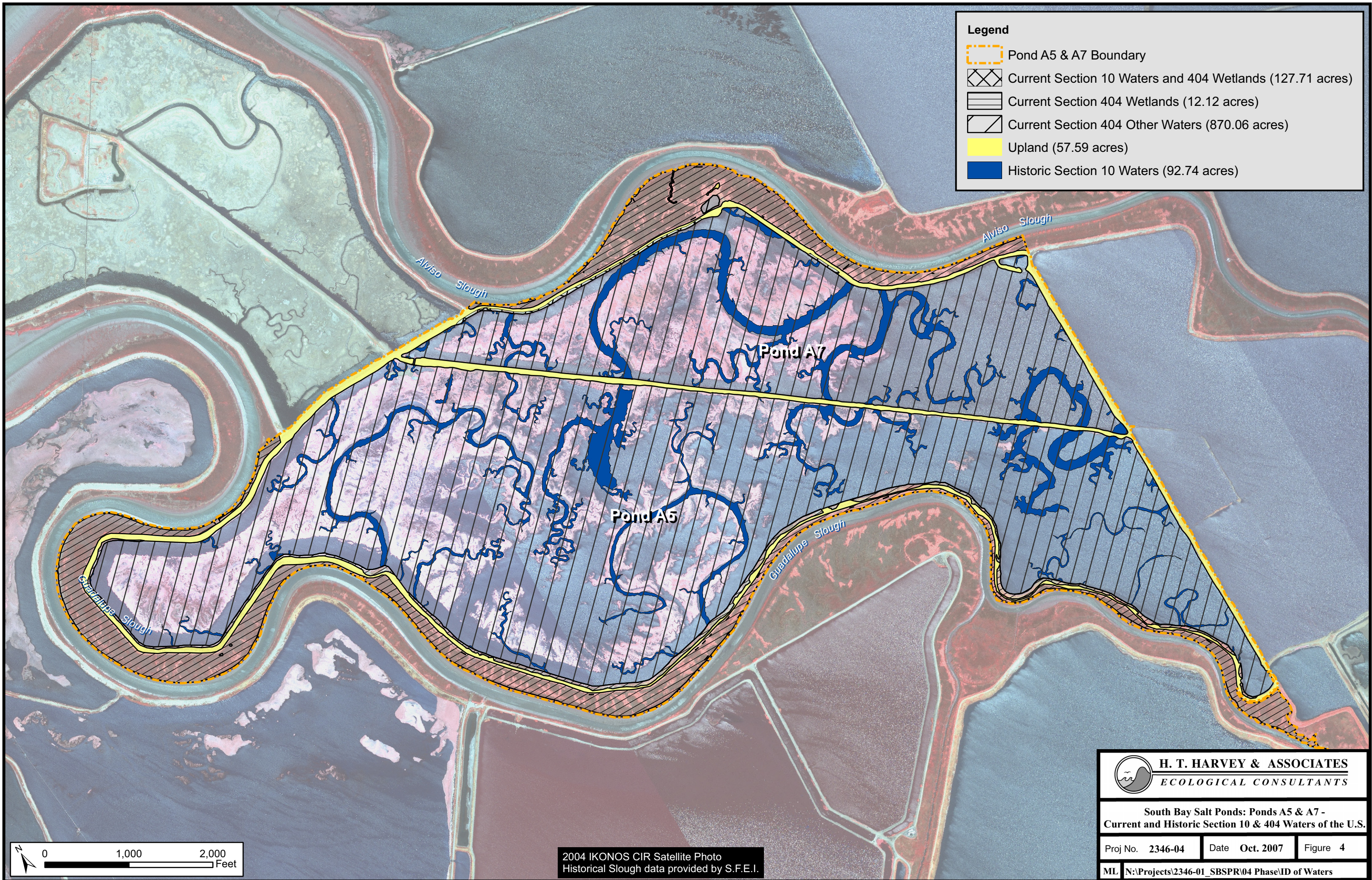
**South Bay Salt Ponds: Pond A6 -
Current and Historic Section 10 & 404 Waters of the U.S.**

Proj No. **2346-04**

Date **Oct. 2007**

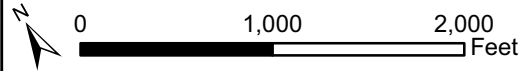
Figure **3**

ML N:\Projects\2346-01_SBSPPR\04 Phase\ID of Waters




Legend

- Pond A5 & A7 Boundary
- Current Section 10 Waters and 404 Wetlands (127.71 acres)
- Current Section 404 Wetlands (12.12 acres)
- Current Section 404 Other Waters (870.06 acres)
- Upland (57.59 acres)
- Historic Section 10 Waters (92.74 acres)



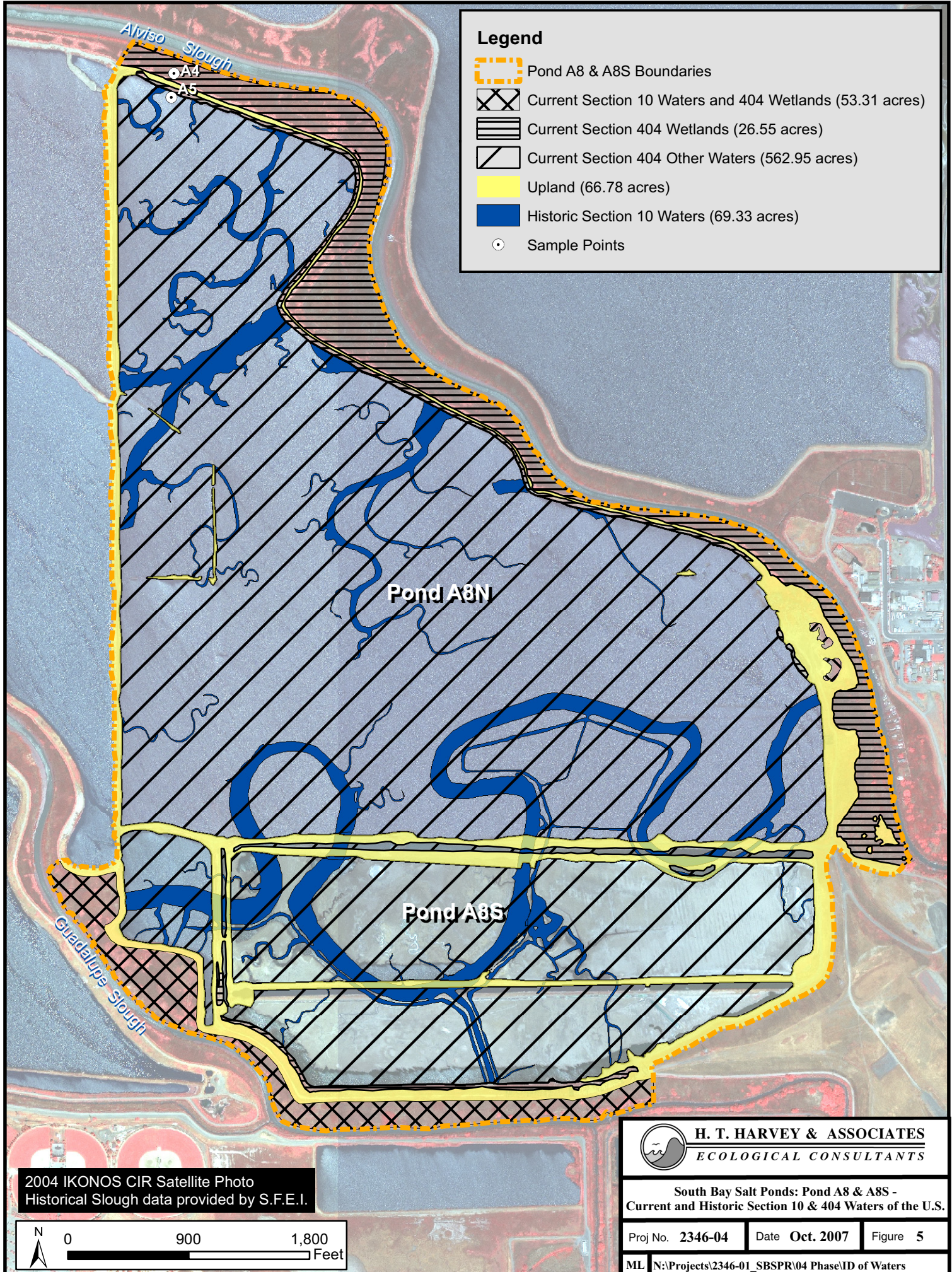
2004 IKONOS CIR Satellite Photo
Historical Slough data provided by S.F.E.I.






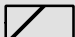



H. T. HARVEY & ASSOCIATES
ECOLOGICAL CONSULTANTS

**South Bay Salt Ponds: Ponds A5 & A7 -
Current and Historic Section 10 & 404 Waters of the U.S.**

Proj No. 2346-04	Date Oct. 2007	Figure 4
ML N:\Projects\2346-01_SBSPP04 Phase\ID of Waters		



Legend

-  Pond A8 & A8S Boundaries
-  Current Section 10 Waters and 404 Wetlands (53.31 acres)
-  Current Section 404 Wetlands (26.55 acres)
-  Current Section 404 Other Waters (562.95 acres)
-  Upland (66.78 acres)
-  Historic Section 10 Waters (69.33 acres)
-  Sample Points

Pond A8N

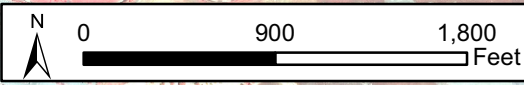
Pond A8S

Alviso Slough

Guadalupe Slough

A4
A5

2004 IKONOS CIR Satellite Photo
Historical Slough data provided by S.F.E.I.

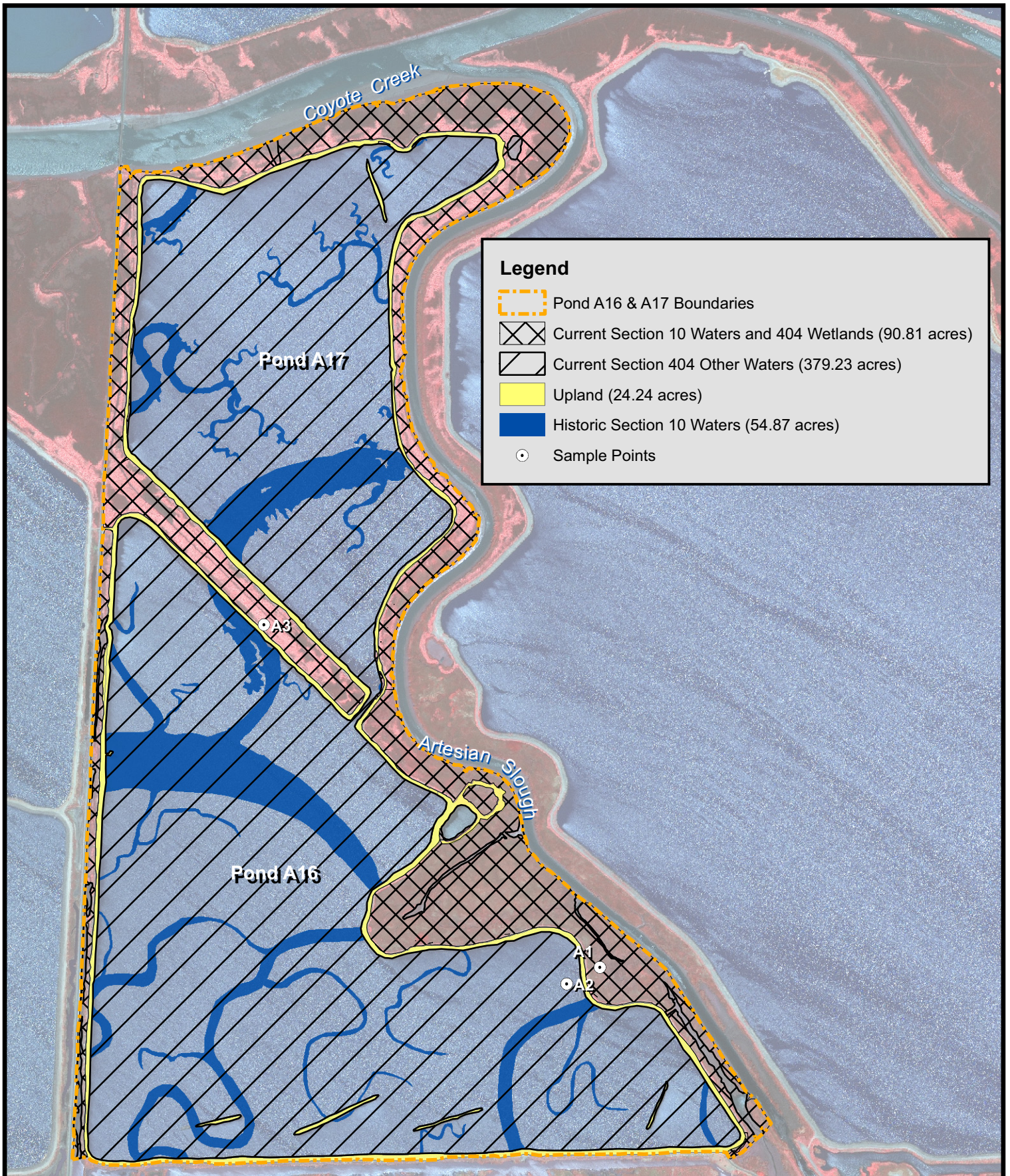


H. T. HARVEY & ASSOCIATES
ECOLOGICAL CONSULTANTS

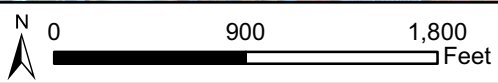
South Bay Salt Ponds: Pond A8 & A8S -
Current and Historic Section 10 & 404 Waters of the U.S.

Proj No. 2346-04 Date Oct. 2007 Figure 5

ML N:\Projects\2346-01_SBSPPR\04 Phase\ID of Waters



2004 IKONOS CIR Satellite Photo
 Historical Slough data provided by S.F.E.I.






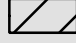
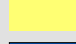


H. T. HARVEY & ASSOCIATES
 ECOLOGICAL CONSULTANTS

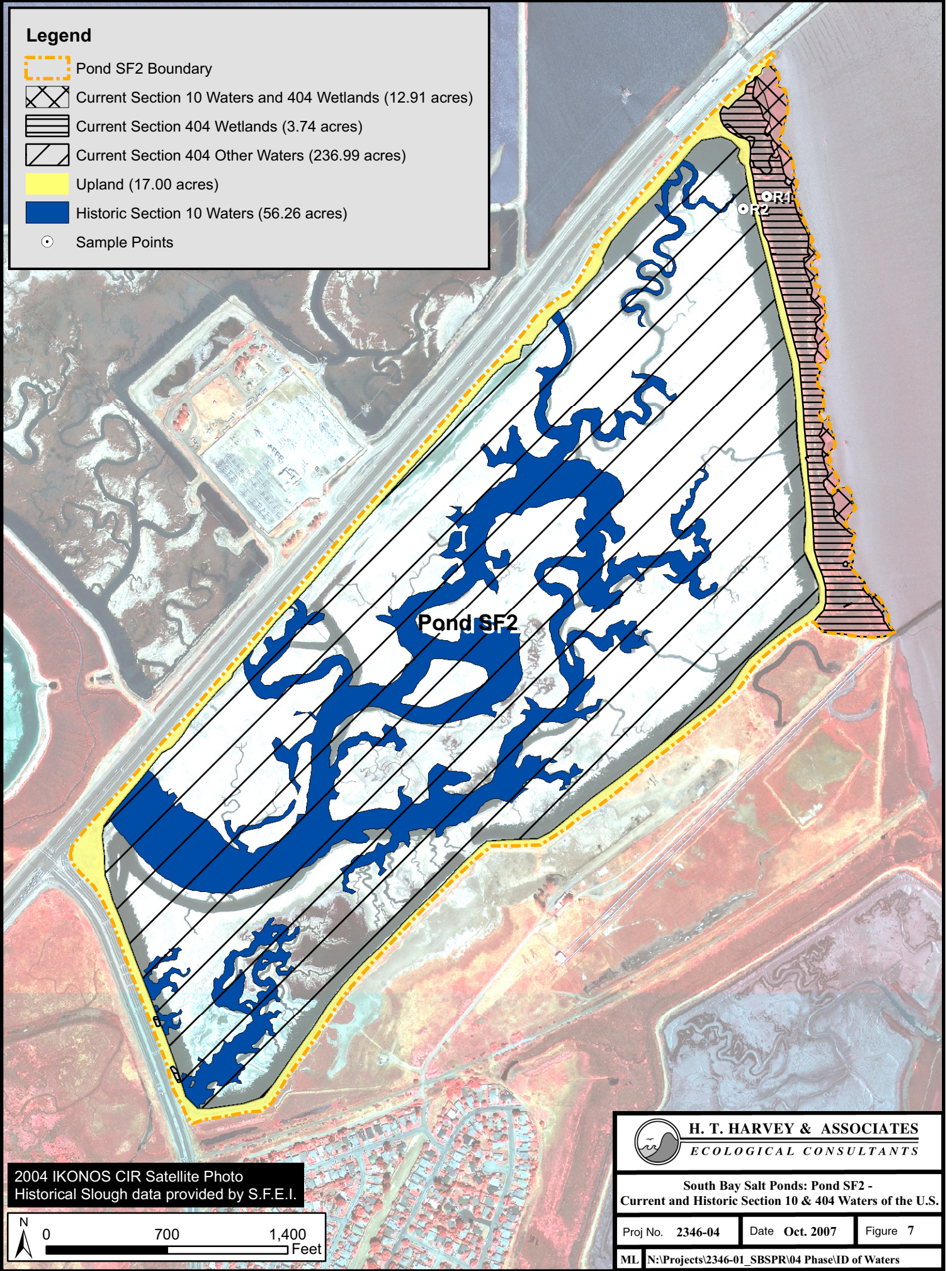
**South Bay Salt Ponds:
 Pond A16 & A17 - Section 404 Waters of the U.S.**

Proj No. 2346-04 Date Oct. 2007 Figure 6

ML N:\Projects\2346-01_SBSPPR\04 PhaseID of Waters

Legend

-  Pond SF2 Boundary
-  Current Section 10 Waters and 404 Wetlands (12.91 acres)
-  Current Section 404 Wetlands (3.74 acres)
-  Current Section 404 Other Waters (236.99 acres)
-  Upland (17.00 acres)
-  Historic Section 10 Waters (56.26 acres)
-  Sample Points




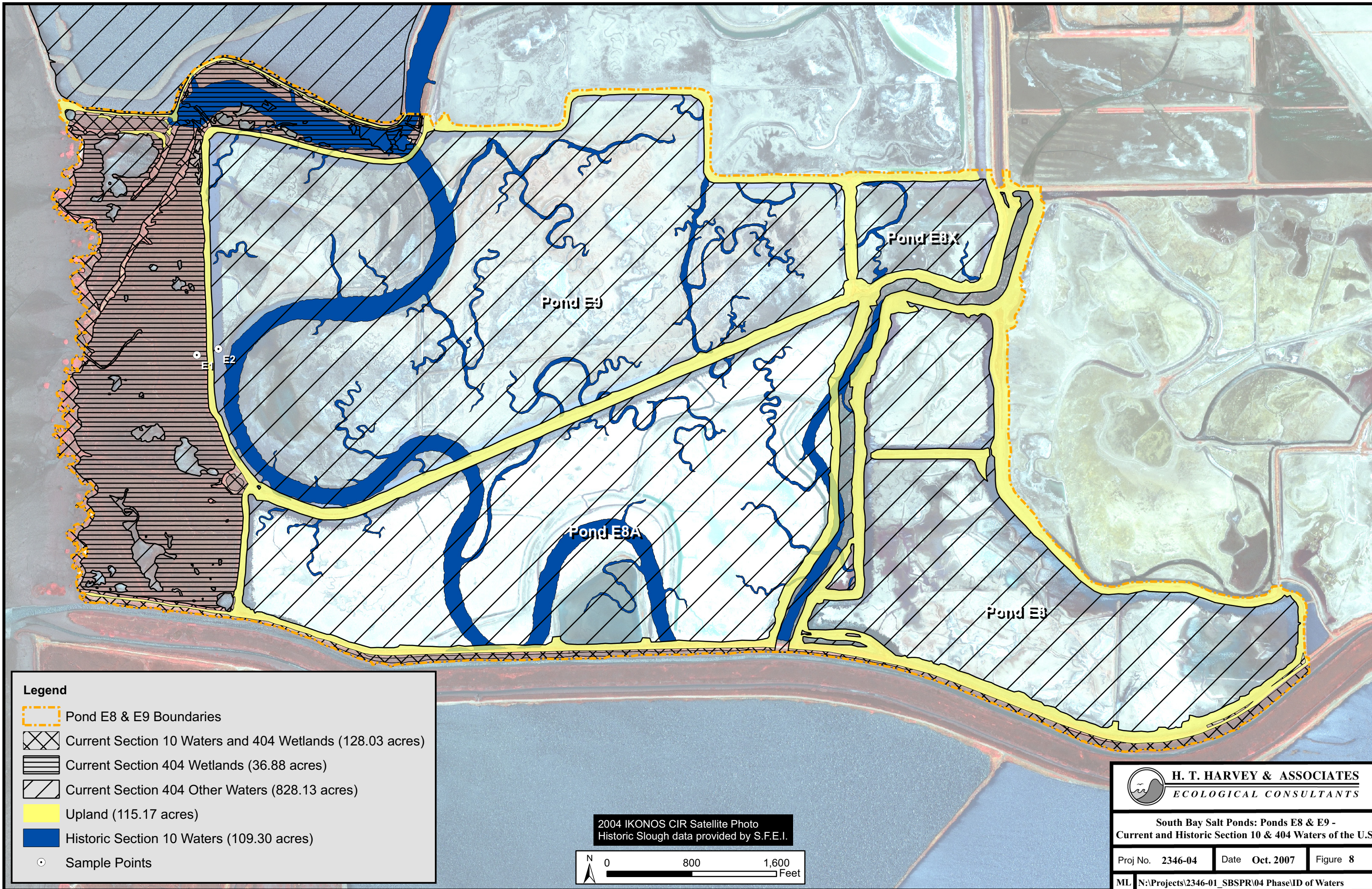
Pond SF2

OR1
OR2








2004 IKONOS CIR Satellite Photo
Historical Slough data provided by S.F.E.I.

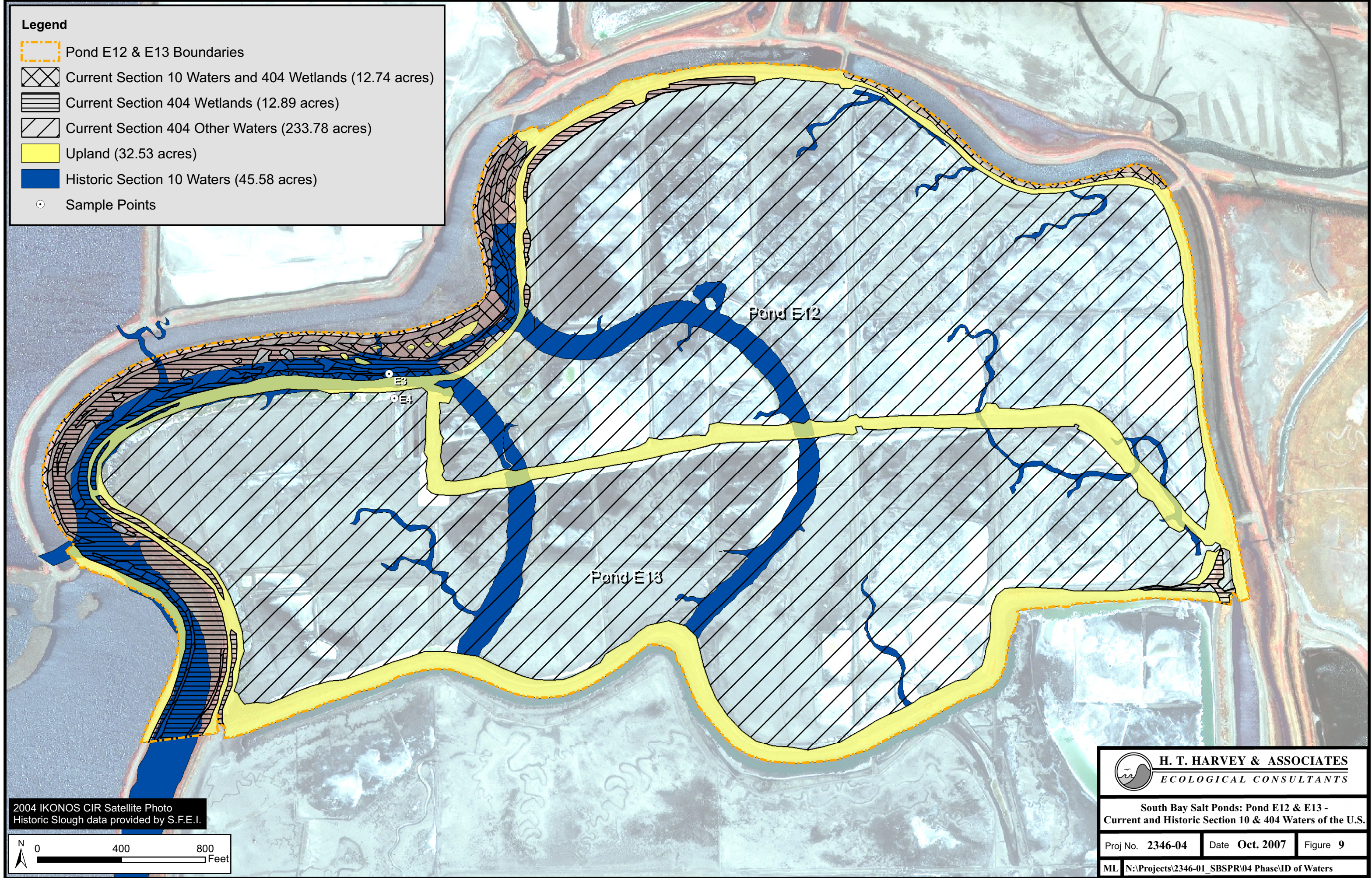


 H. T. HARVEY & ASSOCIATES ECOLOGICAL CONSULTANTS		
South Bay Salt Ponds: Pond SF2 - Current and Historic Section 10 & 404 Waters of the U.S.		
Proj No. 2346-04	Date Oct. 2007	Figure 7
ML N:\Projects\2346-01_SBSPPR\04 Phase\ID of Waters		

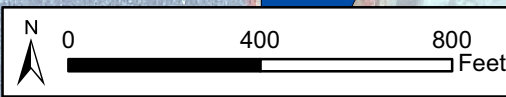



Legend

-  Pond E12 & E13 Boundaries
-  Current Section 10 Waters and 404 Wetlands (12.74 acres)
-  Current Section 404 Wetlands (12.89 acres)
-  Current Section 404 Other Waters (233.78 acres)
-  Upland (32.53 acres)
-  Historic Section 10 Waters (45.58 acres)
-  Sample Points



2004 IKONOS CIR Satellite Photo
 Historic Slough data provided by S.F.E.I.



 **H. T. HARVEY & ASSOCIATES**
 ECOLOGICAL CONSULTANTS

South Bay Salt Ponds: Pond E12 & E13 -
 Current and Historic Section 10 & 404 Waters of the U.S.

Proj No. 2346-04	Date Oct. 2007	Figure 9
ML N:\Projects\2346-01_SBSPR\04 Phase\ID of Waters		