

South Bay Salt Pond Restoration Project



SOUTH BAY SALT POND RESTORATION PROJECT

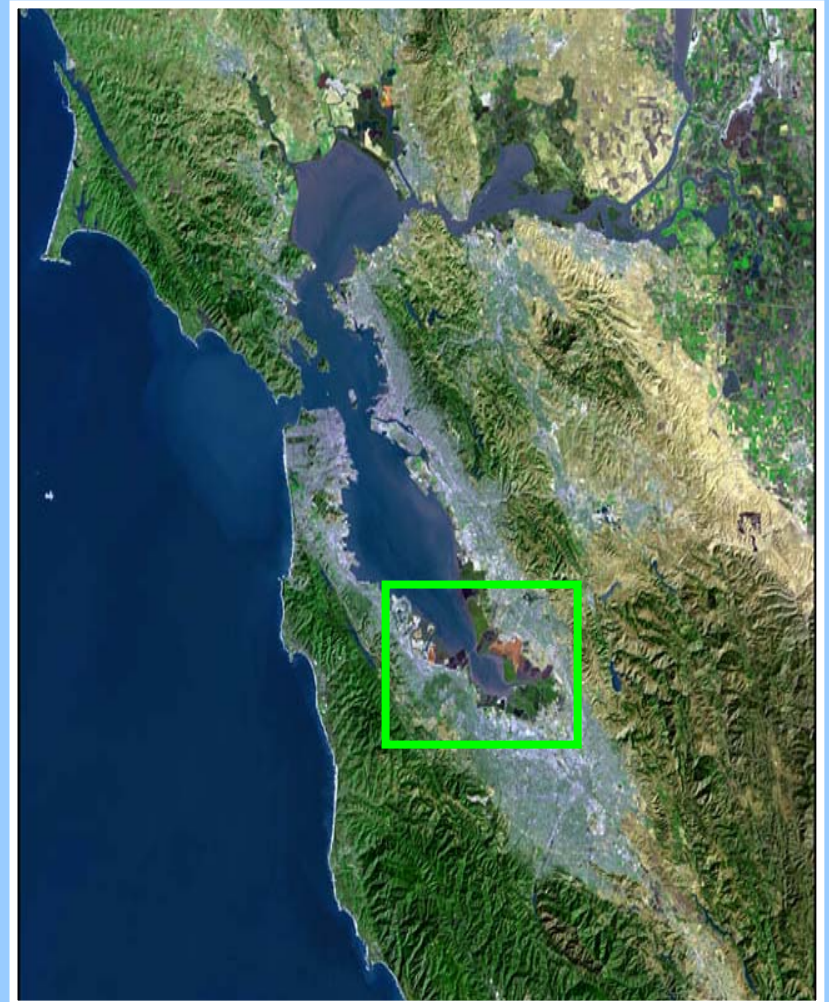
INITIAL STEWARDSHIP PLAN STATUS REPORT

NATIONAL SCIENCE PANEL MEETING

June 13, 2005

Presentation Overview

- Initial Stewardship Activities and Issues
- Eden Landing
- Don Edwards San Francisco Bay NWR

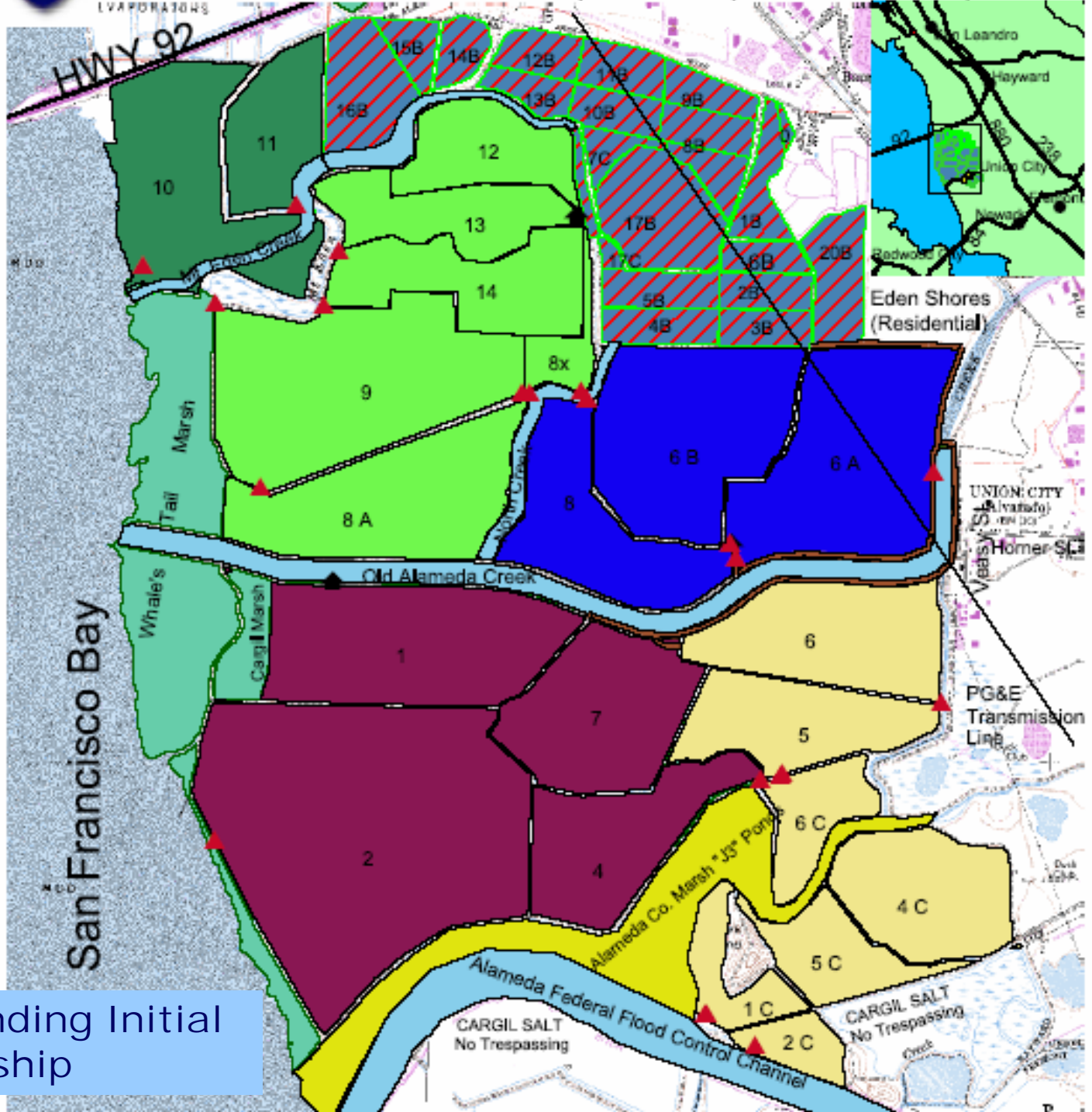


Transfer of Ownership & Ending Salt Production

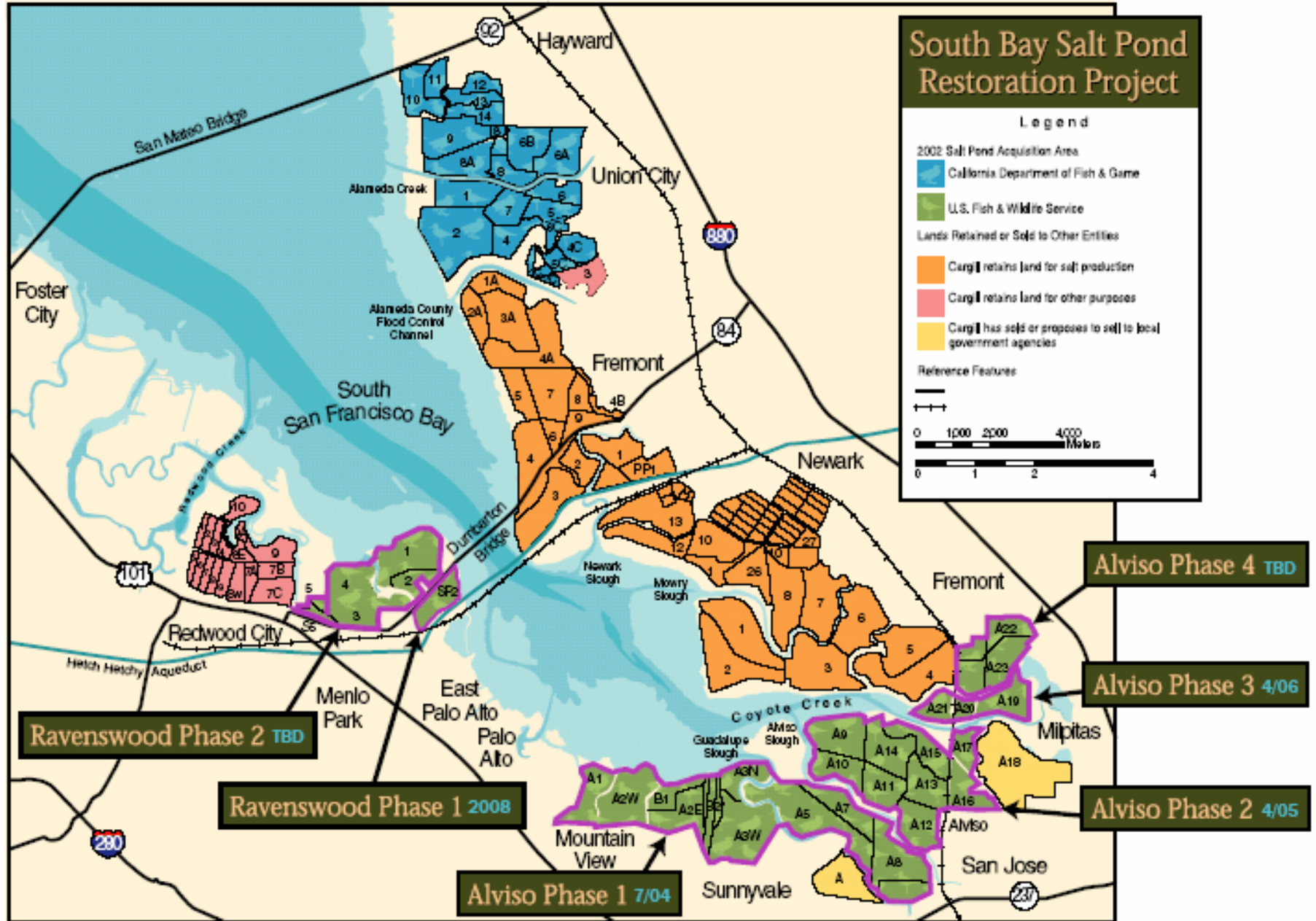
- Cargill phasing out salt production over period of years
- Cargill reducing salinity levels in the ponds
- Cargill responsible for pond management during phase-out
- Eden Landing Ponds transferred
- Alviso Ponds A1-A17 transferred



Water quality testing during salt pond phase-out period

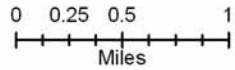


Eden Landing Initial Stewardship

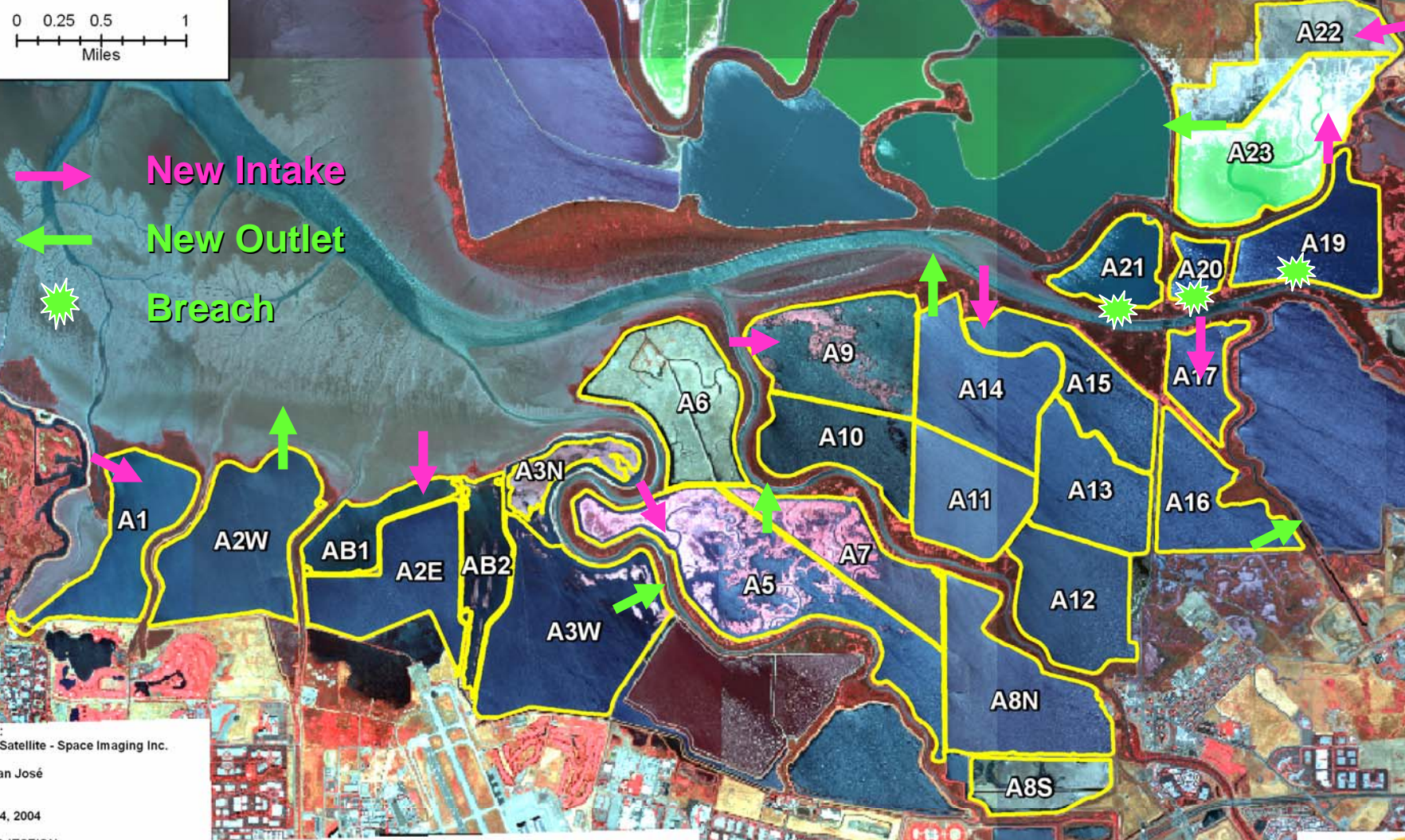


Initial Stewardship Plan Phases for the Don Edwards San Francisco Bay National Wildlife Refuge

Alviso Ponds



New Intake (pink arrow)
New Outlet (green arrow)
Breach (green starburst)



SOURCE:
IKONOS Satellite - Space Imaging Inc.
Cargill
City of San José

DATE:
August 24, 2004

MAP PROJECTION:
UTM Zone 10N, NAD83 Meters

MAP BY:
City of San José Environmental Services Department

SOFTWARE USED:
ArcGIS 9 (ArcInfo, ArcEditor) by ESRI
Image Analyst Extension for ArcGIS by Leica GeoSystems

Initial Stewardship Plan - Alviso











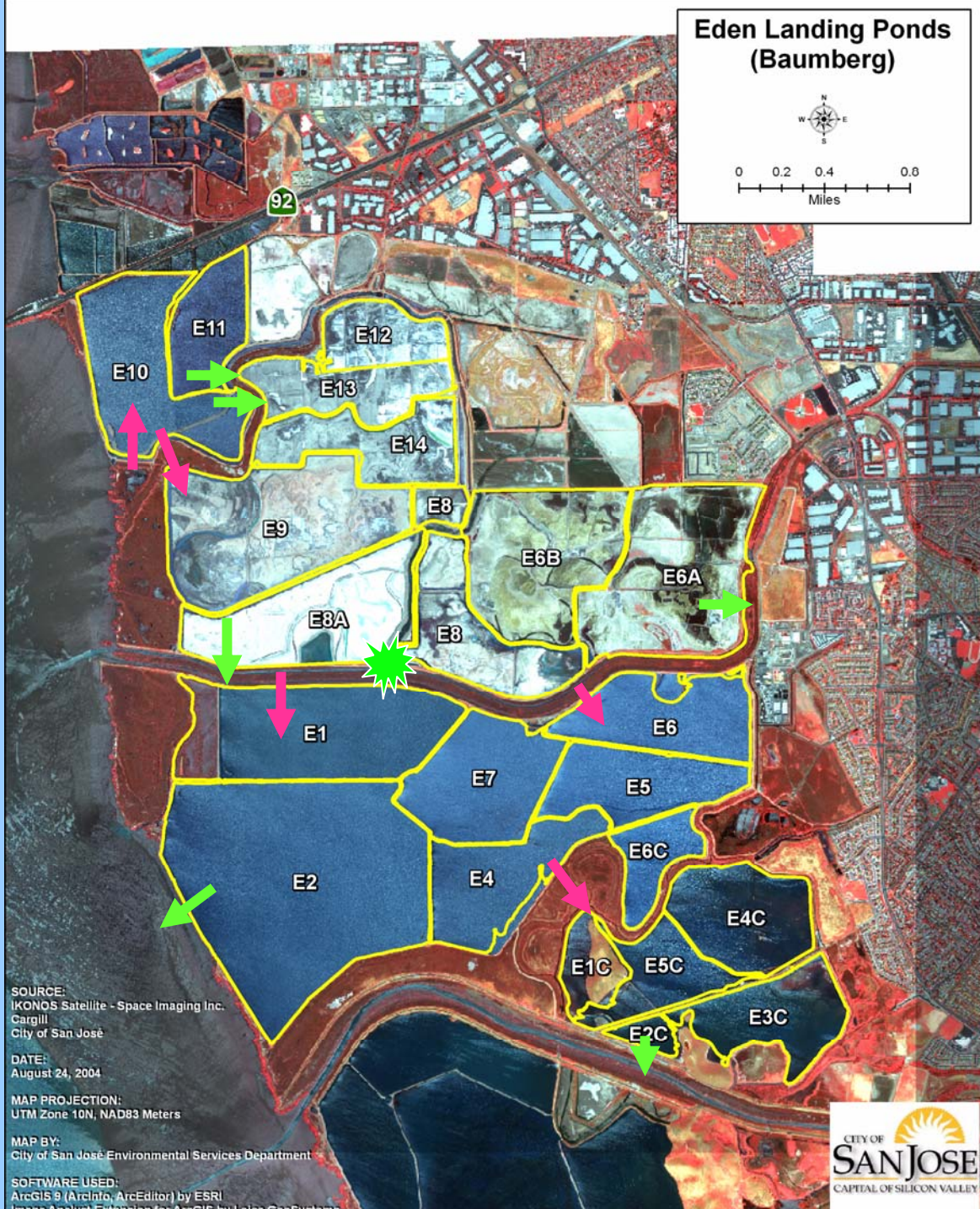




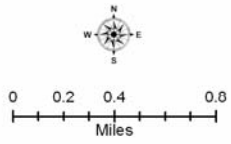


Initial Stewardship Plan – Eden Landing

-  New Intake
-  New Outlet
-  Breach



Eden Landing Ponds (Baumberg)



0 0.2 0.4 0.8
Miles

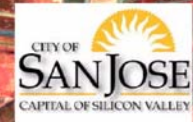
SOURCE:
IKONOS Satellite - Space Imaging Inc.
Cargill
City of San José

DATE:
August 24, 2004

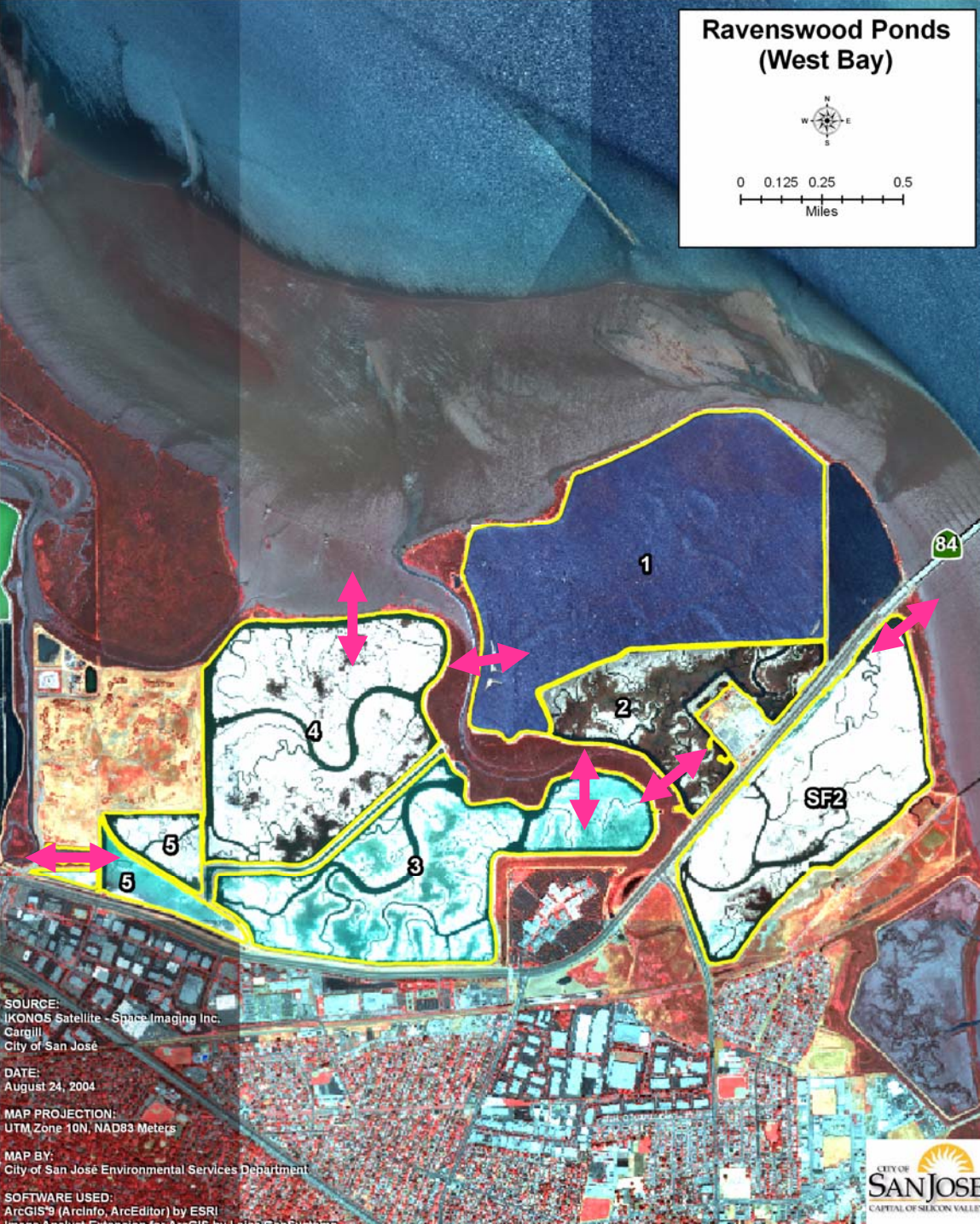
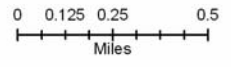
MAP PROJECTION:
UTM Zone 10N, NAD83 Meters

MAP BY:
City of San José Environmental Services Department

SOFTWARE USED:
ArcGIS 9 (ArcInfo, ArcEditor) by ESRI
Internet ArcView Extension for ArcGIS by Esri
GeoEye Satellite Imagery



Ravenswood Ponds (West Bay)



Initial Stewardship Plan – Ravenswood

↔ New Intake & Outlet

SOURCE:
IKONOS Satellite - Space Imaging Inc.
Cargill
City of San José

DATE:
August 24, 2004

MAP PROJECTION:
UTM, Zone 10N, NAD83 Meters

MAP BY:
City of San José Environmental Services Department

SOFTWARE USED:
ArcGIS® (ArcInfo, ArcEditor) by ESRI
Java ArcView Extension for ArcGIS by Intergraph
MapInfo Professional by Bentley



South Bay Salt Pond Restoration Project

● SFEE Sample Locations
● City of San Jose Sample Locations
 Project Boundary
 Highways

Baylands
 Mudflats
 Shallow Bay
 Deep Bay

0 1 2 3 Miles
 0 1000 2000 4000 Meters

Map Datum and projection: NAD 83, UTM Zone 10
 Map data: San Francisco Estuary Institute (salt pond boundaries, bay shoreline); USGS (digital elevation model); FEMA (Flood Hazard); Association of Bay Area Governments.
 Map by: Rivers and Culture
 Map date: January 3, 2005

