



South Bay Salt Pond Restoration Project



SOUTH BAY SALT POND RESTORATION PROJECT

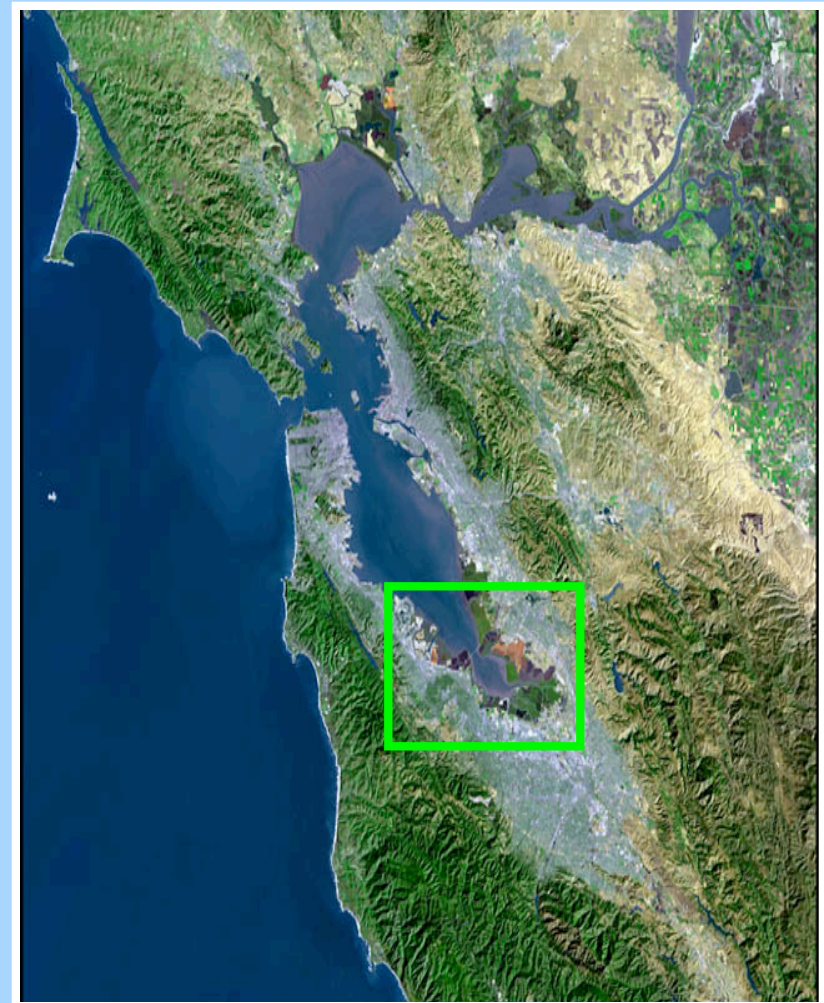
STATUS REPORT

NATIONAL SCIENCE PANEL MEETING

June 13, 2005

Presentation Overview

- Initial Stewardship Activities and Issues
- Restoration planning process status
 - Elements of the ROD
 - Alternatives development
 - Science activities
- So. San Francisco Bay Shoreline Study
- Project Schedule



Transfer of Ownership & Ending Salt Production

- Cargill phasing out salt production over period of years
- Cargill reducing salinity levels in the ponds
- Cargill responsible for pond management during phase-out
- Eden Landing Ponds transferred
- Alviso Ponds A1-A17 transferred



Water quality testing during salt pond phase-out period

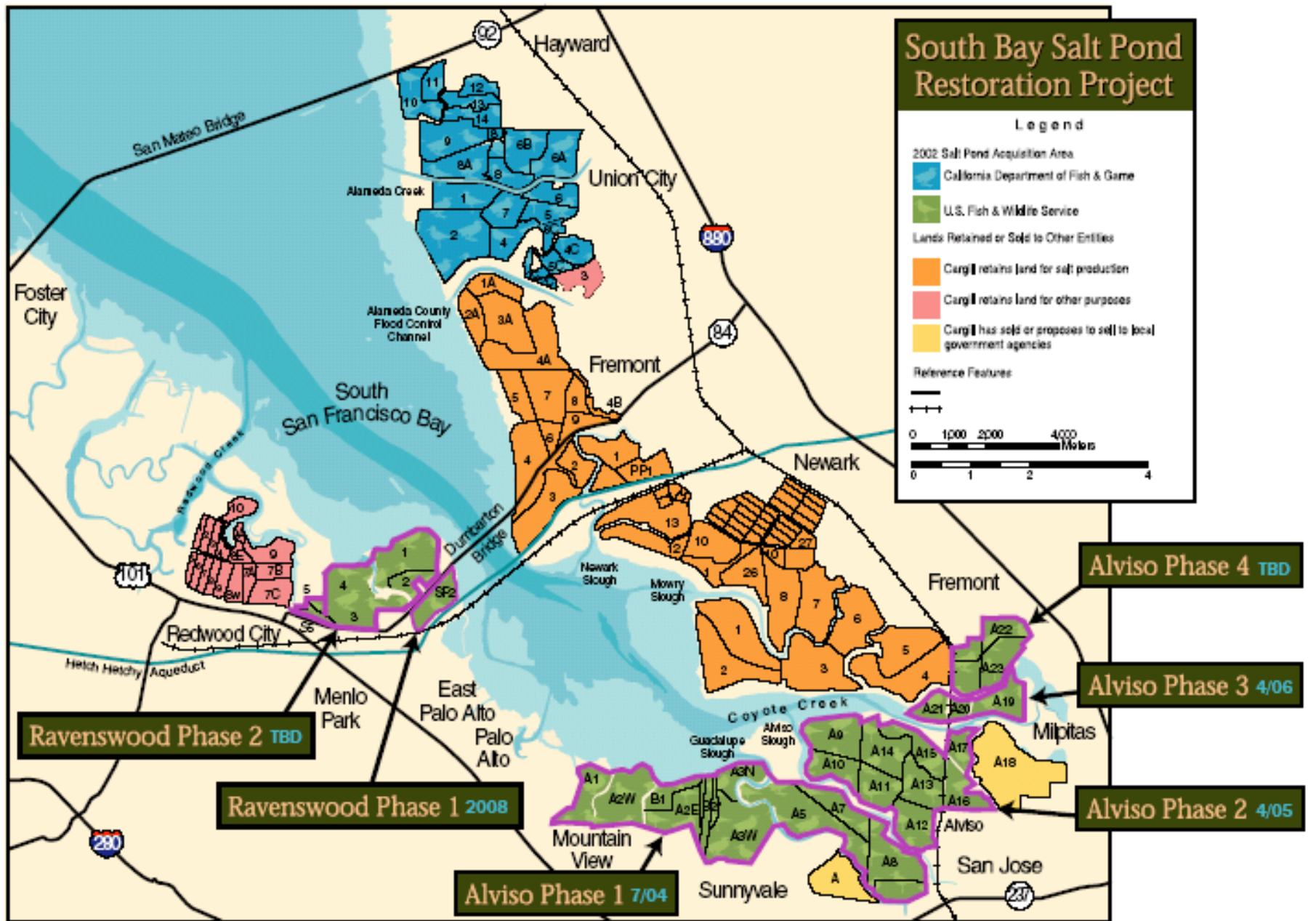


South Bay Salt Pond Restoration Project



Initial Stewardship

- Ponds transferred to public ownership
- Pond openings
- Monitoring results and compliance issues



Initial Stewardship Plan Phases for the Don Edwards San Francisco Bay National Wildlife Refuge



South Bay Salt Pond Restoration Project



Restoration Planning Effort

- Elements of the Record of Decision
- Alternatives Development
- Science Activities



South Bay Salt Pond Restoration Project



Elements of the Record of Decision

- An Integrated Plan for Habitat Restoration, Flood Protection, & Public Access
- Phase 1 Actions, Monitoring, & Applied Studies
- Adaptive Management Methodology
- Institutional Arrangements



South Bay Salt Pond Restoration Project



An Integrated Plan for Habitat Restoration, Flood Protection, & Public Access

- The Plan for restoration of all of the ponds
- A single map
- Two types of decisions:
 - those that are “irreversible”
 - those that are subject to Adaptive Management
- Phased implementation plan identifying actions at specific ponds at specific times (over a period of years)
- Each pond will be managed consistent with the Initial Stewardship Plan until its implementation phase



South Bay Salt Pond Restoration Project



Phase 1 Actions, Monitoring, & Applied Studies

- A set of initial actions designed to begin implementation of The Plan
- Actions would be coupled with monitoring and applied studies
- Phase 1 would be described in substantially more detail than future phases



South Bay Salt Pond Restoration Project



Adaptive Management Methodology

- A methodology for acting on the information gained in implementing the Phase 1 Actions, Monitoring, and Applied Studies (as well as future phases) to:
 - modify those actions;
 - revise future phases of actions and applied studies; and/or
 - revise the assumptions and knowledge base



South Bay Salt Pond Restoration Project



Institutional Arrangements

- Description of any institutional arrangements (contracts, MOUs, etc.) needed to carry forward the elements of the Record of Decision
- At a minimum covering:
 - land management (Dept. of Fish and Game, U.S. Fish and Wildlife Service, others?)
 - flood management (local flood control agencies)
 - science activities (administration of applied studies funding and adaptive management process)



South Bay Salt Pond Restoration Project



Alternatives Development

- Identification of the range of options
 - Last fall
- Identification of Preliminary Alternatives
 - December 2004
- Analysis at landscape scale
 - Happening now
- Identification of “Final” Alternatives
 - Those for EIS/EIR review
 - December 2005



South Bay Salt Pond Restoration Project

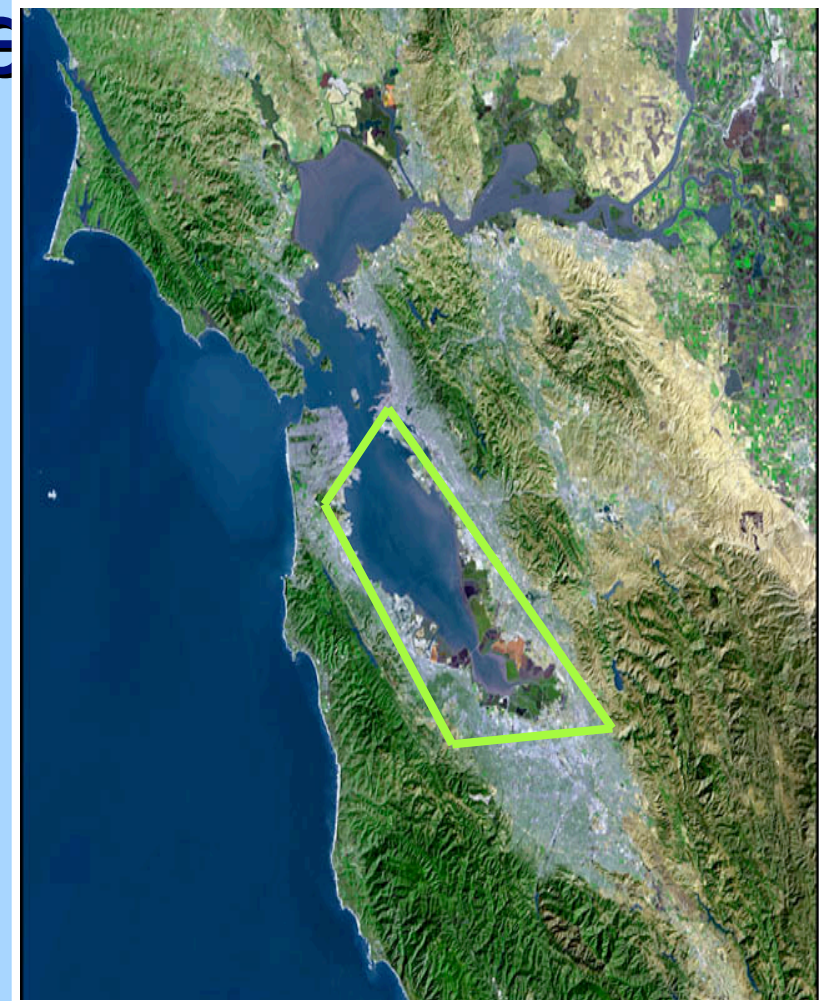


Science Activities

- Sediment Workshops
- Birds and Habitats Workshops
- Fish and Aquatic Habitats Workshop
- Pond A8 Work Group
- Island Pond Work Group
- Adaptive Management Plan Development

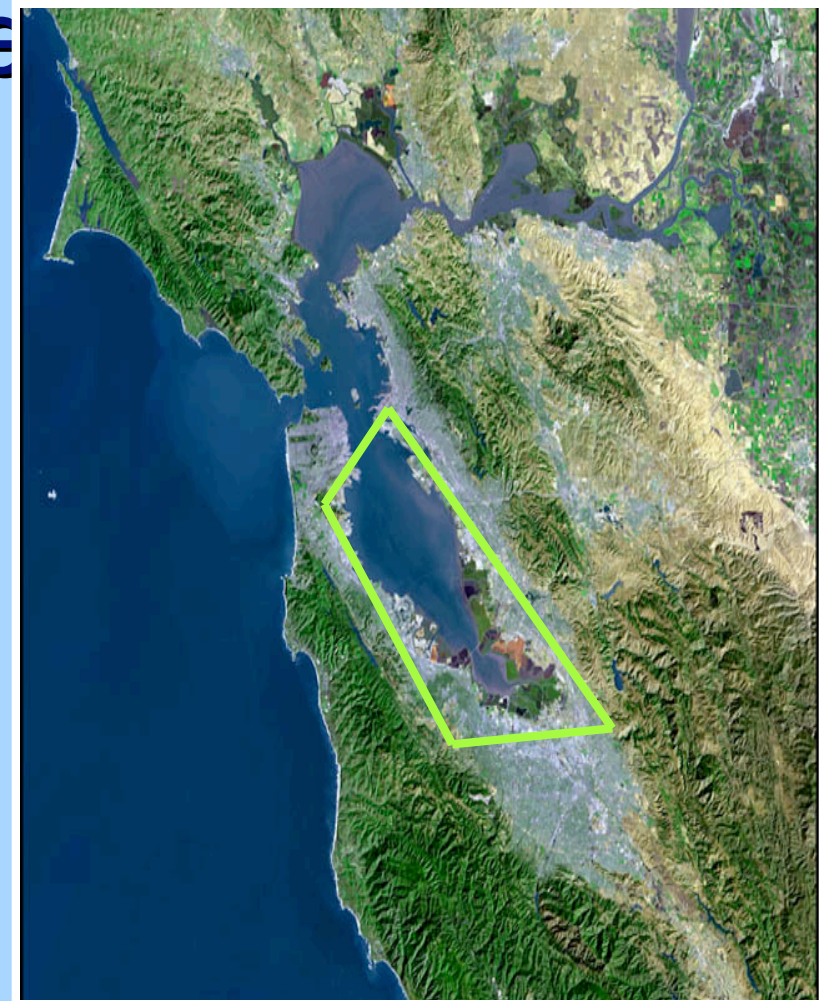
South San Francisco Bay Shoreline Study (Corps of

- 1992 study: **Engine**
 - Cargill levees sufficient for flood control
- 2002 authorization:
 - flood damage reduction
 - environmental restoration and protection
 - related purposes
 - shoreline of San Mateo, Santa Clara, and Alameda counties



South San Francisco Bay Shoreline Study (Corps of

- Reconnaissance **Engineer**
Study complete
- FCSA to be signed in
August
- \$600,000 in
President's budget
for FY '06
- Study to proceed in
geographic segments





South Bay Salt Pond Restoration Project



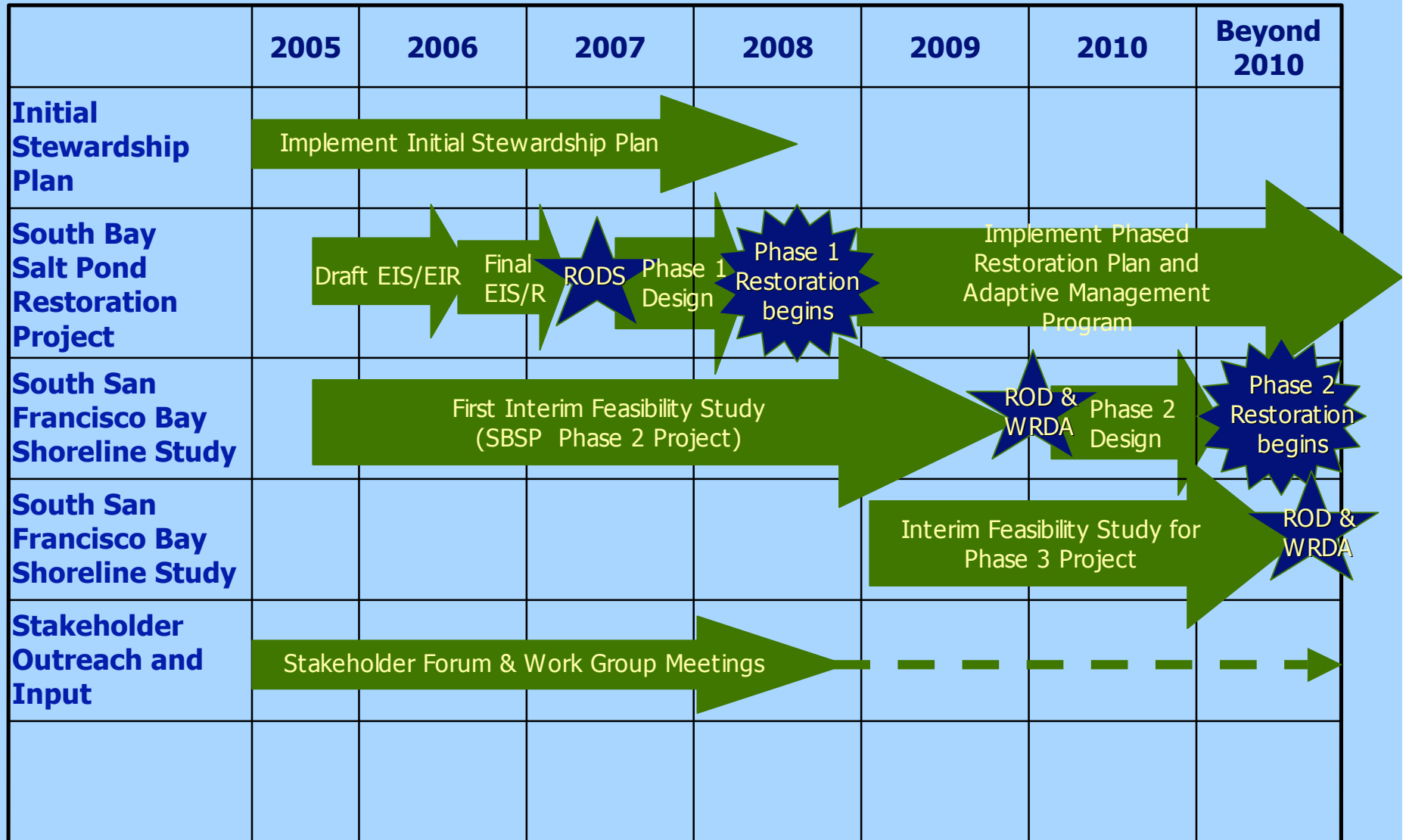
Salt Pond Project - Shoreline Study Integration: A Common Purpose

- A multi-purpose project that will provide an integrated plan for environmental restoration of the South San Francisco Bay Salt Ponds, tidal and fluvial flood protection of the South San Francisco Bay Shoreline (Redwood Creek to Highway 92), and related public access and recreation improvements.

SBSP Restoration / Shoreline Study Project Planning Areas



Draft SBSP/Shoreline Study Schedule





South Bay Salt Pond Restoration Project



Conclusion

- Progress continuing
- Activities proceeding in parallel
 - Some risk involved
- Staying on schedule for ROD in 2007, restoration formally commencing in 2008