



South Bay Salt Pond Restoration Project

Long-Term Governance

Amy Hutzel, SCC

7-13-06



South Bay Salt Pond Restoration Project

Organizational Retreat

- May 2 all day retreat
- Project Management Team members and Executives
- Regulatory Agency Representatives (NOAA, BCDC, RWQCB, COE, FWS)
- Speakers from Napa Marsh, Island Ponds, SF Bay RMP, and San Diego County NCCP/MSCP



South Bay Salt Pond Restoration Project

Organizational Retreat

- Key Questions:
 - Who will manage implementation of the project?
 - How will science and adaptive management be integrated into project decision-making?
 - How will public involvement be integrated into project decision-making?
 - What will be the role of regulatory agencies in implementing the project?



South Bay Salt Pond Restoration Project

Conservancy Proposal

- Conservancy's original role was to develop a restoration plan that could be implemented in 2008.
- Conservancy is proposing to continue facilitating the project during implementation and adaptive management.

Stakeholder Forum Presentation



Conservancy Tasks

- Work with landowners and flood control agencies to construct the project.
- Oversee the Adaptive Management Program.
- Convene decision-making and advisory groups in a streamlined organizational structure.
- Assist with funding and conduct public outreach.



Constructing Phase 1

- Ensure that the implementation, applied studies, monitoring and reporting fulfills the assurances made in the EIS/EIR and permits.
- Contract to prepare plans and specs for each Phase 1 construction effort.
- Identify suitable organizations to manage each Phase 1 construction effort.
- Determine who will construct future phases.
- Communicate progress on implementation to the public, regulatory agencies, and scientists
- Provide opportunities for public feedback and input.



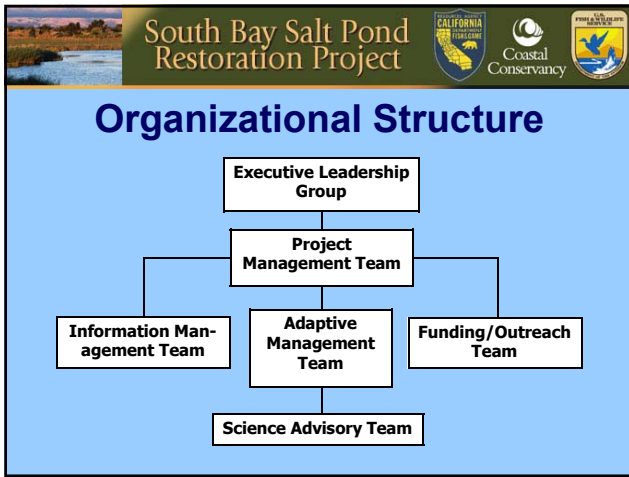
Adaptive Management

- Establish an Adaptive Management Team, which will make recommendations to the PMT on:
 - how to define and measure success,
 - priorities for future phases of implementation,
 - priorities for modifications to Phase 1 efforts,
 - priorities for applied studies and monitoring data collection and analysis.
- Establish a Science Advisory Group that makes recommendations to the Adaptive Management Team on:
 - design of applied studies and monitoring.
 - data collection and analysis priorities.



Adaptive Management, cont'd

- Ensure that the project is implemented in a manner that allows for applied studies.
- Ensure that monitoring occurs with each implementation activity and that monitoring data are analyzed and made available for decision-making.
- Work with the Adaptive Management Team and Science Advisory Group to ensure that the results of applied studies and monitoring are used to make design changes to:
 - portions of the project that have already been implemented.
 - future phases.
- Ensure that the overall adaptive management approach of the project is followed.



-
- ### Organizational Structure
- Executive Project Manager
 - Lead Scientist
 - Monitoring Program Director
 - Information Management Specialists
 - Facilitator for AMT
 - Funding and Outreach Assistants
 - Two Conservancy staff

-
- ### Funding and Outreach
- Identify funding sources and pool funding.
 - Work to develop a stable funding source.
 - Lead PMT decision making on use of funds, guided by AMT.
 - Engage public in project:
 - Establish local stakeholder groups, involved in implementation and monitoring.

-
- ### Funding Update
- Bond measures on November ballot
 - Proposition 1E
 - Proposition 84
 - Federal FY '07 budgets
 - Dept. of Interior
 - USFWS
 - USGS
 - Corps of Engineers