

**South San Francisco Bay
Shoreline Study**
Alviso Ponds & Santa Clara County Interim Feasibility Study

Other Participating Agencies: US Fish & Wildlife Service; California Department of Fish & Game; Alameda County Flood Control District

**South San Francisco Bay
Shoreline Study**

**Status Report
(7/13/06)**

Beth Dyer, SCVWD

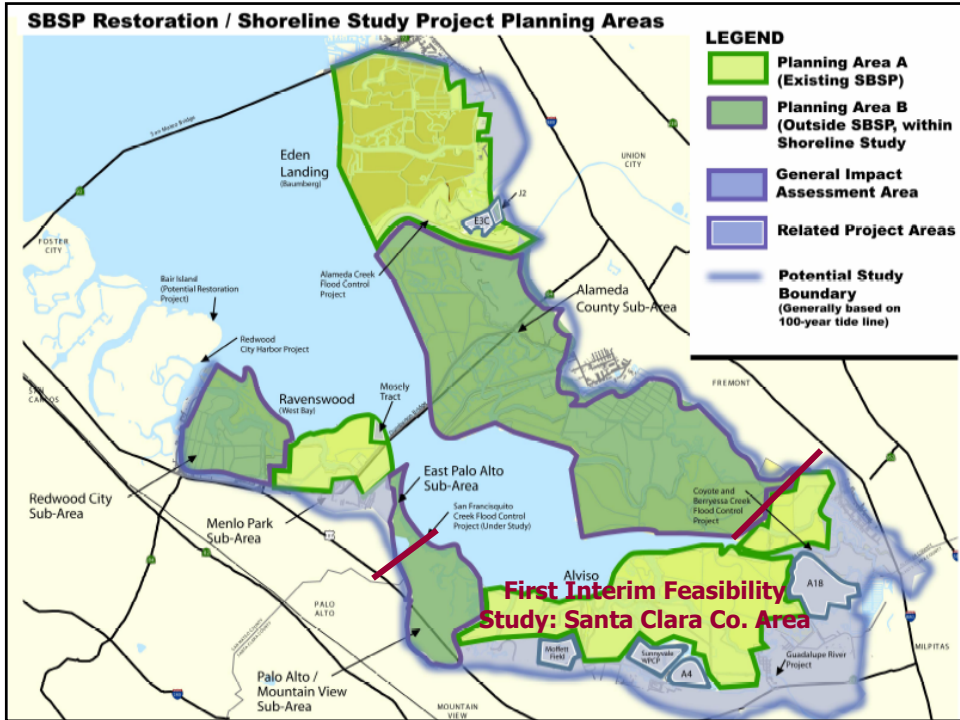


**South San Francisco Bay
Shoreline Study**
Alviso Ponds & Santa Clara County Interim Feasibility Study

Other Participating Agencies: US Fish & Wildlife Service; California Department of Fish & Game; Alameda County Flood Control District

Project Purposes

- Tidal and Fluvial Flood Damage Reduction
- Habitat Restoration
- Public Access and Recreation



South San Francisco Bay Shoreline Study
 Alviso Ponds & Santa Clara County Interim Feasibility Study

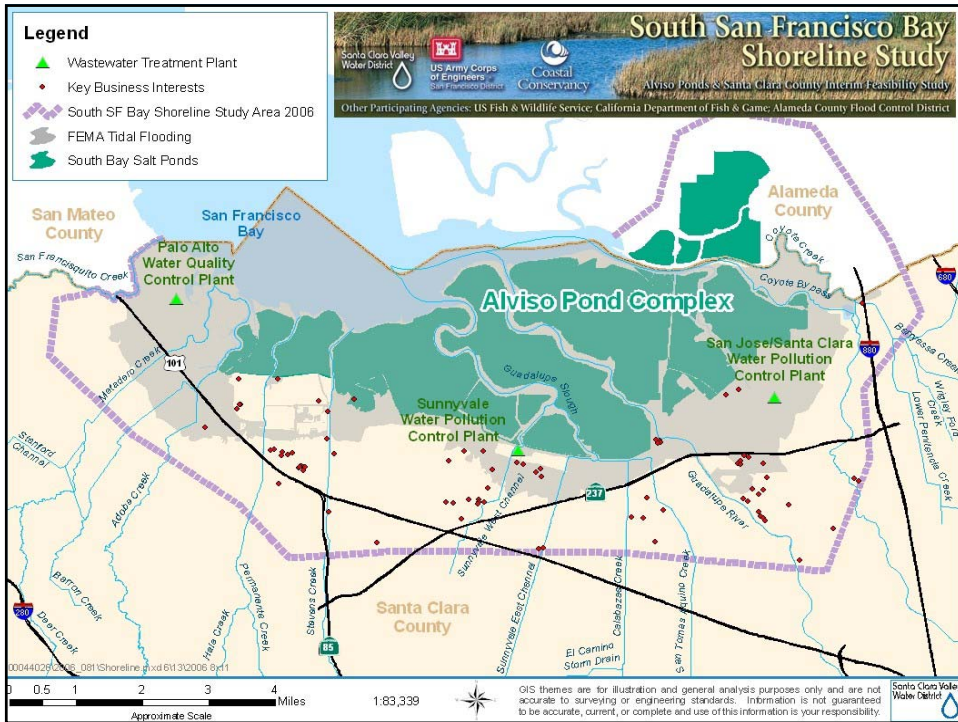
Santa Clara Valley Water District | US Army Corps of Engineers San Francisco District | Coastal Conservancy

Other Participating Agencies: US Fish & Wildlife Service; California Department of Fish & Game; Alameda County Flood Control District

1% Tidal Flood Potential Impacts

- Preliminary damage estimate (very rough): \$500 million
- Direct and “ripple” effects include:
 - Inundation to a height of 8’ above sea level.
 - Thousands of residences inundated.
 - Shutdown of infrastructure (highways, airports, wastewater treatment plants).
 - Loss of recycled water for cooling electricity generation facilities.
 - Lost productivity for Silicon Valley businesses, including Google, Lockheed, Yahoo, Sun Microsystems, Intel, and others important to homeland security.

Stakeholder Forum Presentation



South San Francisco Bay Shoreline Study
 Aviso Ponds & Santa Clara County Interim Feasibility Study
 Other Participating Agencies: US Fish & Wildlife Service; California Department of Fish & Game; Alameda County Flood Control District

Businesses Potentially Hurt by Flooding

The following logos represent businesses potentially affected by flooding:

- symantec
- National Semiconductor
- CISCO SYSTEMS
- NORTEL
- Agilent Technologies
- AMD
- intel
- BAE SYSTEMS
- adaptec
- LIFESCAN
- Trimble
- ebay
- Bank of America Higher Standards
- Maxtor
- NASA
- ADERA
- APPLIED MATERIALS
- SONY
- LOCKHEED MARTIN
- Lam RESEARCH
- Google
- LSI LOGIC
- 25
- bea Think liquid
- The Mercury News MercuryNews.com
- CALPINE
- COHERENT
- cadence



South San Francisco Bay Shoreline Study
Alviso Ponds & Santa Clara County Interim Feasibility Study

Other Participating Agencies: US Fish & Wildlife Service; California Department of Fish & Game; Alameda County Flood Control District

Accomplishments

- Public Scoping Meeting - January 26, 2006
- Meetings with Cities (ongoing)
- Start of Feasibility Analysis
- Trip to Washington, DC



South San Francisco Bay Shoreline Study
Alviso Ponds & Santa Clara County Interim Feasibility Study

Other Participating Agencies: US Fish & Wildlife Service; California Department of Fish & Game; Alameda County Flood Control District

Next Steps

- Meetings with Cities (continued)
- Analysis to define “Without Project Conditions” (target: late spring 2007)