


South Bay Salt Pond Restoration Project Stakeholder Forum Meeting (10-04-06)



Adaptive Management and Decision-Making


Dr. Lynne Trulio

1



Focus on Public Input into Adaptive Management Process

- Basic Elements of the AMP
 - Background and need for adaptive management
 - Foundation for Adaptive Management
 - Implementation Science
 - Implementation Management:
Structure and Processes
- AM Processes
- Public Input into the Process



2

South Bay Salt Pond Restoration Project Stakeholder Forum Meeting (10-04-06)

South Bay Salt Pond Restoration Project



8 Key Project Uncertainties

- Mercury
- Sediment Dynamics/Mudflats
- Water Quality
- Bird Use of Changing Habitats
- Invasive and Problem Species
- Benefits to Non-Avian Species
- Public Access and Wildlife
- Social Dynamics

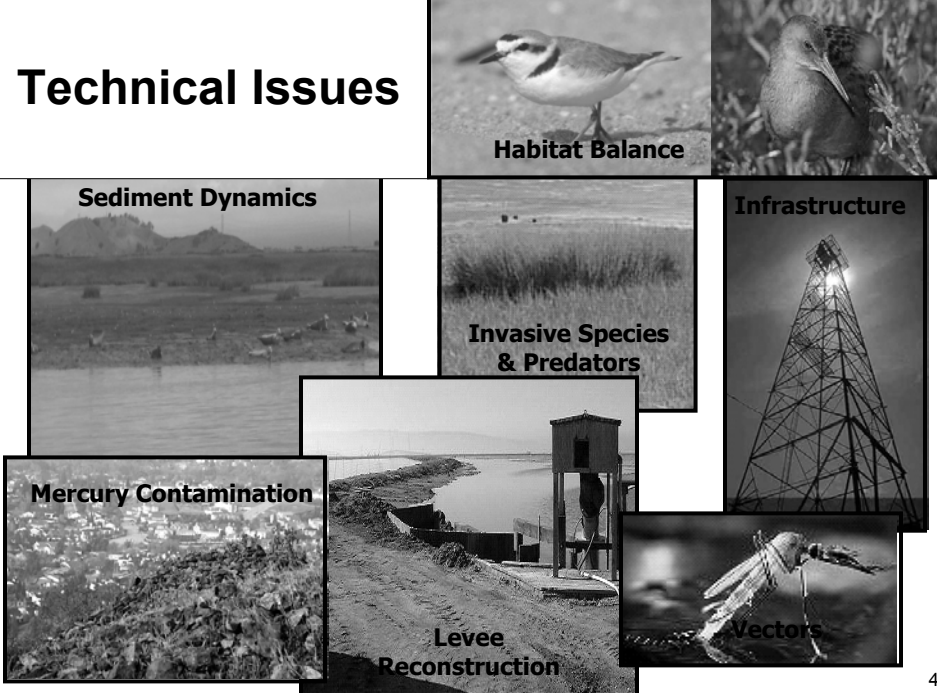
Developed 21 Applied Studies Questions

- Focused research
- Reduce uncertainties
- Direct management application



3

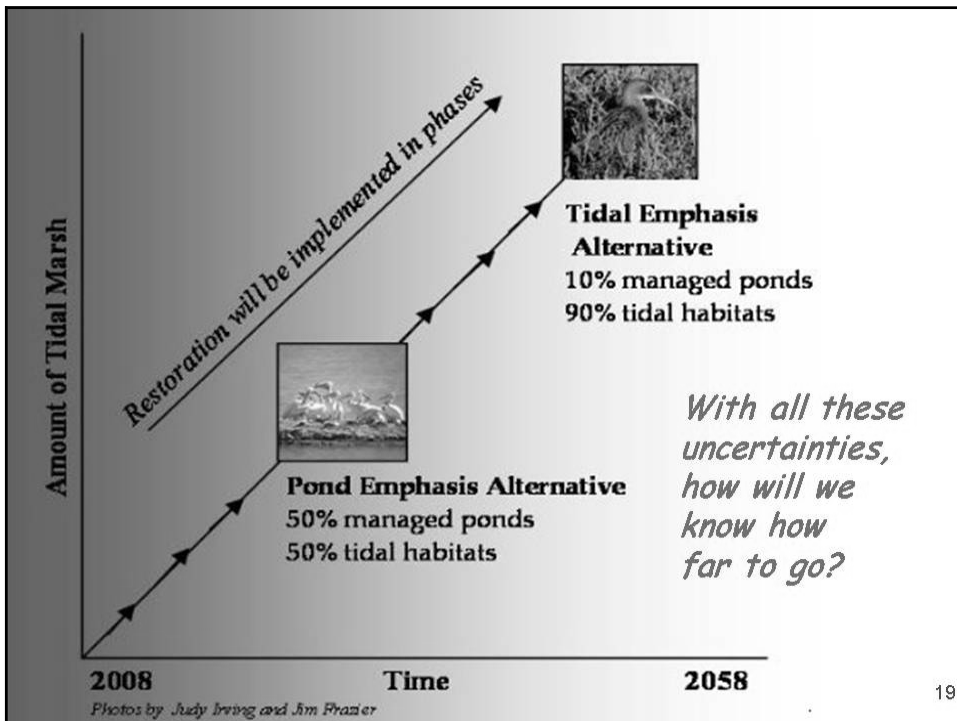
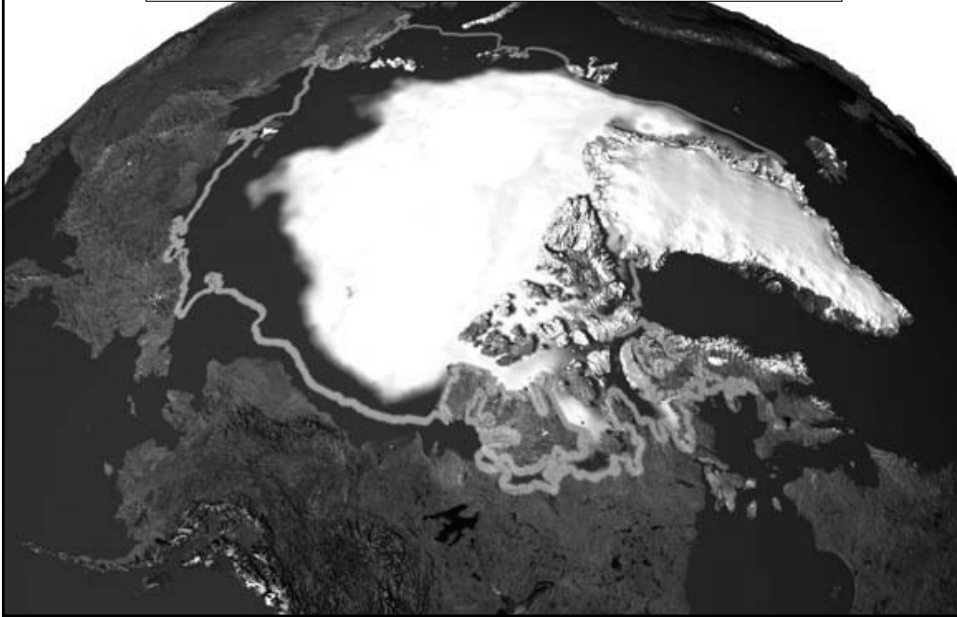
Technical Issues




- Habitat Balance**
- Sediment Dynamics**
- Invasive Species & Predators**
- Infrastructure**
- Mercury Contamination**
- Levee Reconstruction**
- Vectors**

4

The Biggest Issue?



South Bay Salt Pond Restoration Project Stakeholder Forum Meeting (10-04-06)

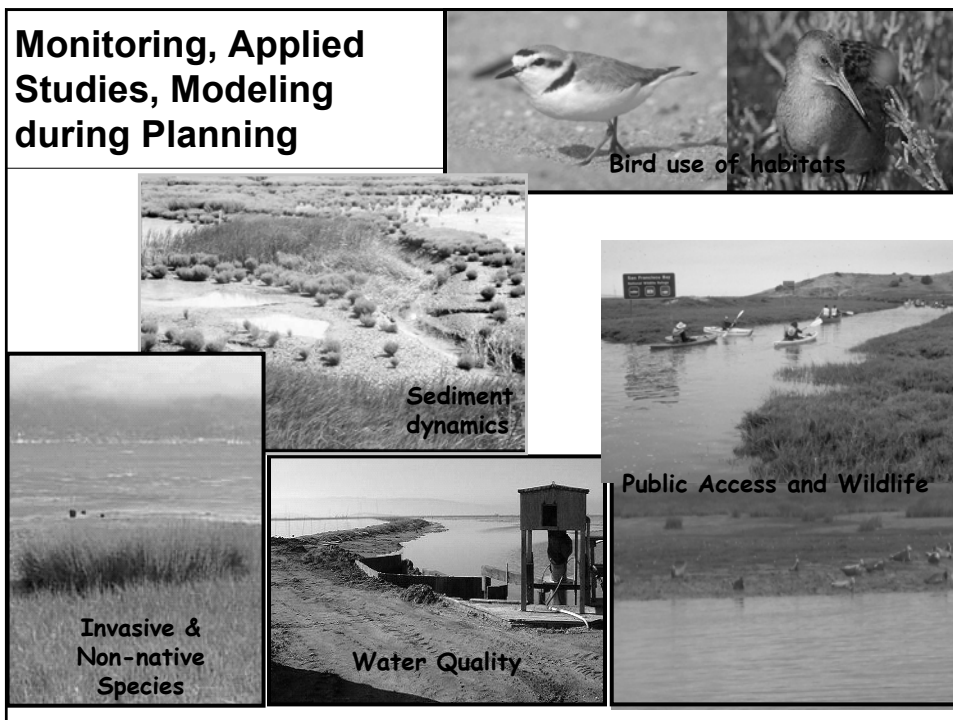


Adaptive Management Is the Answer!

- A **cyclic process** for learning from management decisions and applying that knowledge to current and future decisions.
- **Project managers** will use this information to:
 - Determine if the Project is meeting its Objectives
 - Correct current actions and design future phases.

7

Monitoring, Applied Studies, Modeling during Planning



- Bird use of habitats**: Two images showing birds in their natural habitat.
- Sediment dynamics**: An aerial view of a wetland area with a path.
- Water Quality**: A view of a water body with a small structure in the foreground.
- Public Access and Wildlife**: A view of a water body with people in kayaks and a sign in the background.
- Invasive & Non-native Species**: A view of a wetland area with tall grasses.

South Bay Salt Pond Restoration Project Stakeholder Forum Meeting (10-04-06)



Implementation Science

- Restoration Targets and Management Triggers
- Monitoring and Applied Studies
- Management Actions



9



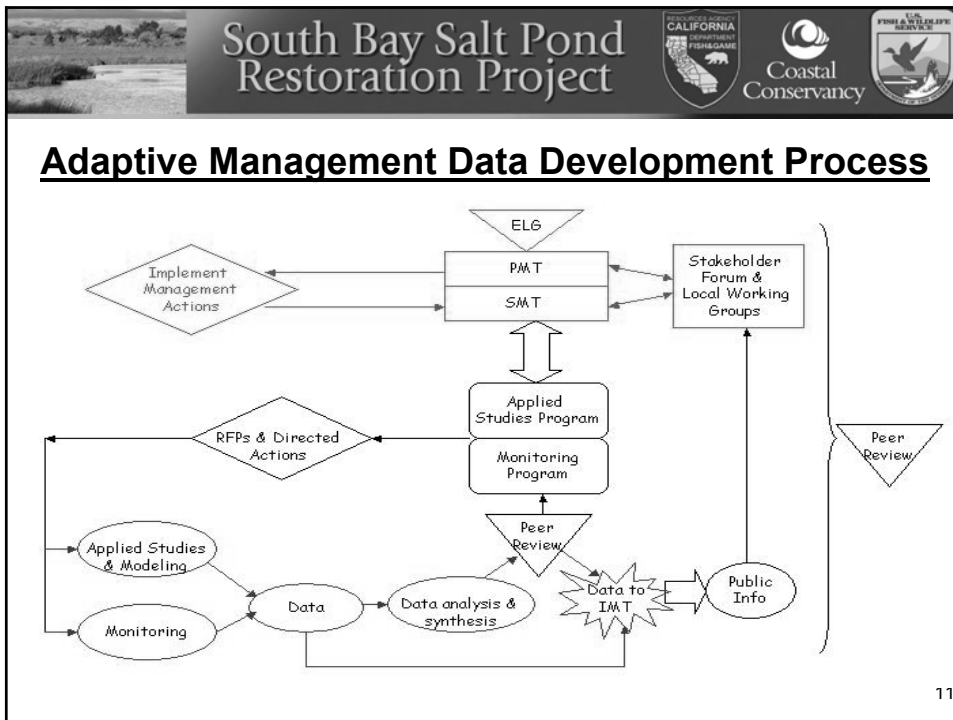
Adaptive Management Process

- *Timely and useful information*
 - Science Management Team and Information Management Team
- *Public input*
 - Stakeholder forum and Local Working Groups
- *Decision-making and action*
 - Project Managers and Executive Leadership Group



10

South Bay Salt Pond Restoration Project Stakeholder Forum Meeting (10-04-06)



11

Public Involvement

- **E-Connections: continual**
 - Website: Monitoring and study data, Modeling outputs, record of Project activities
 - Email: Triggers and Actions, Newsletters
- **Local Working Groups: as needed**
 - PMT and SMT members attend
 - Input on local activities and current plans
- **Stakeholder Forum: 2 or so meetings per Year**
 - Annual Report-outs from PMT and SMT
 - Input on Project decisions and future plans

12

South Bay Salt Pond Restoration Project Stakeholder Forum Meeting (10-04-06)

