

To: South Bay Salt Pond Restoration Project Stakeholder Forum

From: Center for Collaborative Policy

Re: Outcomes from the April 15, 2004 Stakeholder Forum Meeting

Background: The fourth meeting of the Stakeholder Forum (Forum) was held Thursday, April 15, 2004 from 10:00 to 12:30 pm at Moffett Field. The Forum has been convened to provide ongoing input to the South Bay Salt Pond Restoration Project Management Team (PM Team) and its technical consultants on the evolving restoration project's objectives and on elements of the restoration plan itself.

Following the Forum meeting, the Habitat Restoration, Flood Management, and Public Access/Recreation Work Groups met from 1:15 to 3:30 pm. Meeting summaries for each Work Group are available from the project website and will be distributed to interested parties.

Meeting Attendance: Attachment 1 lists meeting participants.

Meeting Materials: In advance of the meeting, Forum members were provided a meeting agenda, a summary of the February 18, 2004 Stakeholder Forum meeting, and agendas for the afternoon Work Group meetings. At the meeting, copies of assorted slideshows presented were distributed as well as Work Group and Local Government Forum meeting summaries and a diagram depicting Opportunities for Stakeholder Input. All presentations and handouts are available from the project website (www.southbayrestoration.org).

Substantive Meeting Outcomes:

1. *Welcome, Introductions, and Agenda Review*

Steve Ritchie, Executive Project Manager, California Coastal Conservancy (CCC), welcomed everyone and asked both Forum members and public attendees to introduce themselves.

Mary Selkirk (Center for Collaborative Policy) was introduced as the facilitator of the Forum. She discussed the need to replace both a local government and environmental justice/community representative on the Forum and indicated efforts would be made to do so by the next Forum meeting. She provided an overview of the meeting's objectives:

- Provide a thorough briefing by the Project Team on the alternatives planning framework, including detailed project objectives, evaluation criteria, and alternative development methodology.

- Report to Stakeholder Forum and Project Partners on outcomes of the second and third Work Group meetings.
- Familiarize Stakeholder Forum members with Project's science strategy associated with restoring the South Bay salt ponds.

The objective for afternoon Work Groups will be to review and comment on the alternative-planning framework and to discuss possible dates for salt pond tours.

3. *Summary of Recent Public Outreach Activities*

Ritchie summarized the recent public outreach activities undertaken in support of the restoration project:

Docent-Led Site Tours: In partnership with Wildlife Stewards, the USFWS is launching a program to train volunteer tour docents. Docents are individuals who will lead tours and introduce the public to the restoration project. To find out how you can become involved, call Carmen Leong-Minch at (510) 792-0222 and ask about the Salt Pond Tour Docent Program.

Speakers Bureau: The SF Bay Joint Venture continues to coordinate presentations and speakers from the Joint Venture's Public Outreach Committee. Those interested in either becoming a speaker or in scheduling a presentation should contact Caroline Warner at (415) 883-3854 or cwarner@sfbayjv.org.

4. *Review and Approval of 2-18-04 Meeting Summary*

Ritchie asked for comments and approval of the February 18, 2004 meeting summary. Dan Bruinsma stated that the summary mistakenly identified him as representing "Santa Clara, CWEA" and asked that it be revised to identify his affiliation as the City of San Jose. Accepting this minor revision, the Forum adopted the meeting summary.

5. *Review of Timeline and Opportunities for Public Dialogue and Input*

Referring to a graphic handout/presentation, Ritchie provided a detailed explanation of the pending opportunities for public input on developing the alternatives planning framework and identifying overall project opportunities and constraints.

Ritchie explained that each vertical column on the graphic displays the anticipated timeline and opportunities for public input on a specific document. The three key documents being developed at this time are: 1) Alternatives Planning Framework, 2) Opportunities and Constraints, and 3) Initial Project Concepts. Selkirk added that in addition to meetings today and in late May, each Work Group will have time over the duration of the project to develop consensus feedback on a variety of issues related to the restoration project.

6. *Brief Reports from Work Groups*

Ritchie asked a representative from each of the Work Groups to summarize their recent activities.

Flood Management Work Group: Dan Bruinsma (City of San Jose) presented the following summary of recent Flood Management Work Group activities:

- The first meeting (February 18) was dedicated to establishing work group protocols, identifying methods for noticing future work group meetings, and receiving a presentation regarding how flood management issues will be integrated into the overall restoration planning process.
- The second meeting (March 29) provided the 21 attendees with an overview of the geographic and institutional framework for flood management in the south bay and a more detailed explanation of the timeline, deliverables, and overall planning approach for the restoration project. In addition, the Work Group received a presentation regarding the Lower Alameda Creek Stewardship Committee's restoration efforts and modeling efforts. The Work Group meeting concluded with a review of the various data sources identified so far that would help the flood management planning effort, and a review of the preliminary detailed project objectives and evaluation criteria for flood management.
- An Ad-Hoc GIS Group has been meeting to begin discussing how they can assist with mapping and data management needs for the project.
- The City of San Jose believes flood protection levels need to be improved rather than just maintaining existing levels. In addition, large areas of south bay are prone to flooding and, thus, we need to look at flood management at the landscape level and not just the pond level.

Habitat Work Group: Jim McGrath (Port of Oakland) presented the following summary of recent Habitat Work Group activities:

- The Habitat Restoration work group has met twice, February 18 and March 26. The Focus of the first meeting was both organizational and substantive. The proposed role of the Work Group was discussed, including how the group would be making recommendations to the entire Stakeholder Forum. Following a brief presentation by restoration design consultants, the participants discussed issues critical to early development of restoration approaches. Some of the comments and questions included:
 - Can mixes of habitats and trade-offs across habitats really be determined without knowing existing conditions, especially for aquatic species?
 - How do constraints push against one another? E.g., flood control, sediment, re-contamination potentials
 - How are we going to arrive at a decision or recommendation for the Forum and the PM Team?
 - What is the potential for sediment deposition and is there a sediment deficit?
 - How are the remaining Cargill ponds going to be integrated into the plan?
- The second meeting provided an opportunity to discuss lessons learned from history. Robin Grossinger of the San Francisco Estuary Institute provided an excellent presentation on the historical South Bay tidal marsh environment, making extensive use of both historic and current maps. Carl Wilcox of the PM Team then provided an

overview of current conditions of the salt ponds and the implications for restoration opportunities and challenges.

- The remainder of the meeting was devoted to the first review of proposed detailed objectives for habitat restoration. Some of the key questions /comments that were raised by the group included:
 - How do we deal with trade-off's across objectives?
 - How will water quality (e.g. mercury effects on clapper rail eggs) be integrated into overall final project objectives?
 - How are you incorporating temporal factors (including timing of objectives, e.g. early protection of endangered species)?
 - Be sure to address the sustainability of types of habitat.
 - Evaluation criteria for clapper rail should include more than just aerial extent.
- Lastly, a meeting was held April 14 to begin discussing the implications of mercury to the restoration project.

Public Access & Recreation Work Group: Janet McBride (Bay Trail) presented the following summary of recent Public Access & Recreation Work Group activities:

- The Work Group has met twice - February 18 and April 1.
- The first meeting was dedicated to establishing work group protocols, identifying methods for noticing future work group meetings, and to providing a presentation from the consultant team regarding how public access and recreation issues will be integrated into the overall restoration planning process.
- The second meeting provided over 30 attendees with an overview of the salt pond ownership and management requirements for both USFWS and DFG, an explanation from the consultant team of what data and information have been collected so far, and an overview from EBRPD, The Bay Trail Program, and BCDC on their respective land holdings and regulatory responsibilities. Attendees were then asked to identify on a large project map desirable access points and recreational opportunities. The Work Group meeting concluded with an introduction of the preliminary detailed project objectives and evaluation criteria for evaluating public access/recreation alternatives. Comments on the detailed project objectives and evaluation criteria raised by Work Group members included:
 - Where will hunting be allowed?
 - How will planning for cultural resources be incorporated into the process?
 - What, if any, constraints are there to running trails along the tops of levees?
 - Will visual access be included as a component of public access?
 - The evaluation criteria seem very quantitative. What about the qualitative experience?
 - Should each objective also be evaluated as to whether or not it can be implemented at a reasonable cost?

Funding Work Group Work Group: Mark Holmes (The Bay Institute) presented the following summary of recent Funding Work Group activities:

- The Work Group has met on a couple of occasions and initiated a good dialogue. Securing funding will be as big an effort as the habitat restoration effort itself and significant funds are needed to implement anything. There is a need for joint state and federal contributions for implementation. With a 10% federal, 10% private, and 80% state match for acquisition, there is a desire for a more equitable contribution to the implementation portion of the project.
- After their second meeting, the Work Group asked for assistance in securing federal funding and for more information on how the Chesapeake Bay and Everglades Projects were able to secure funds. The need exists for strong lobbying skills to secure federal support. A public relations program may prove effective. Briefings will be scheduled shortly and a draft strategy document is being circulated among work group members. The goal is to have a funding strategy in place within one year.

Following the presentations, the following comments/questions were raised:

- *There is a strong need for a balance between mosquito abatement and flood management and the Santa Clara County strongly supports the integration of these two objectives.*
- *Was there anyone from the Corps of Engineers at the Flood Management Work Group meeting and has a process been developed for integrating the Corps into the process?*
Response: No, a representative from the Corps was not present at the Work Group meeting. However, the PM Team is working closely with the Corps to determine the best manner for integrating them into the planning process.
- *What is being done to incorporate anticipated sea level rise into the process?*
Response: An international panel of experts has developed a range that predicts that the sea level will rise approximately six inches over the next 50 years and approximately 12 inches over the next 100 years. The PM Team will incorporate these projections into the overall planning process.
- *Need to consider salt-water incursion in the restoration process.*

7. *Public Comment*

No public comments were made.

8. *The Science Team's Science Strategy for The South Bay*

Lynne Trulio (Project Lead Scientist) provided a presentation (available from the project website) that covered the following topics:

- Role of the Science Team
- Conceptual Model Development
- Science Strategy Guidance
- Moving Forward

Trulio explained that the charge of the Science Team is to:

- Bring science into all phases of the restoration process and to all involved parties;
- Develop a science strategy and conceptual models to guide the restoration of South Bay ecosystems;
- Identify critical data needs;
- Identify uncertainties; and
- Help guide consultant activities and review products.

To help meet this charge, the Science Team has produced a Science Strategy and a Conceptual Model Process that will be reviewed by the National Science Panel that is meeting in late April. A description of both the strategy and the model is available on the project website.

The Science Strategy and model provides a scientific framework by identifying:

- Key Questions and Data Needs
- Modeling Guidance
- Monitoring/Applied Study Strategies
- Research Approaches
- Peer Review Requirements
- Science Integration

Pilot projects will be pursued to assist with refining the models. Potential sites for pilot studies include:

- Data collection at Eden Landing Ecological Reserve
- Data collection at Alameda Flood Control Project
- Pilot studies at the ISP “Island Pond” restorations
- Existing restoration projects

A conceptual model is used to help understand/measure how well we are moving from existing to desired future conditions. The model will also help answer how activities at the individual pond level may affect the conditions at the landscape scale.

Referring to a “Tidal Marsh Flowchart,” Trulio explained how the project plans to model how restoration actions might affect baseline environmental conditions. Target conditions are established for various habitat types and can be measured to determine to what degree the restoration plan is succeeding. Potential impacts will be monitored and evaluated as part of the adaptive management process that will continue over time. Conceptual models are very general and there are many linkages within the model being explored at this time.

Due to time constraints, Trulio did not discuss the “Managed Pond Flowchart” in detail. Following the presentation, the following questions were raised:

- *Will conceptual models be used to drive the alternative-planning framework?*
Answer: the Consultant Team has assisted in developing the model and will be working very closely with the PM Team to ensure the best available information and data are used to develop the alternatives.

- *How do you figure out how much time is necessary before looping back in an adaptive management process?*
Answer: The Science Strategy considers a 50-year time horizon, but does look at shorter intervals. Monitoring will begin immediately after implementation and will be ongoing.
- *How does the general goal of supporting a diversity of species agree with the need to recover and support threatened and endangered species?*
Answer: This is a central policy question that will require extensive discussions. Viable populations of threatened and endangered species are desired and discussions will be ongoing with various regulatory agencies to determine the ideal strategy for creating habitats.
- *Since there is no monitoring work group, how will the PM Team determine triggers that would be used to determine when to alter course?*
Answer: Adaptive management is integral to the implementation process and we will all have to work very diligently to develop the adaptive management process.
- *Will specific desired species numbers be identified to assist in determining when to revise actions?*
Answer: This is a very difficult issue and the PM Team and Science Team will continue to discuss how the detailed project objectives should be clarified to make clear how and when adaptive management procedures should be followed.

9. *Alternatives Development Framework*

Michelle Orr introduced herself as the overall project manager for the Phil Williams & Associates team (PWA Team) and David Blau (EDAW) as the lead for public access and recreation planning. Orr and Blau used a PowerPoint presentation (available on the project website) to seek input on:

- Alternative Formulation and Evaluation Approach;
- Detailed Objectives; and
- Approach to Evaluation Display.

The presentation described the challenge of developing alternatives considering there are infinite possibilities for creating and varying alternatives. To help ease this process, an evaluation methodology is envisioned that:

- Systematically identifies, evaluates and contrasts alternatives;
- Ensures all “reasonable” alternatives are considered; and
- Provides a defensible basis for selection of a range of alternatives and the preferred alternative.

The methodology builds upon the six Project Objectives adopted by the Stakeholder Forum on 2/18/04. These Project Objectives will form the basis and guidance for all decision-making at all project scales. Preliminary detailed objectives have been developed for the

Project Objectives and two evaluation factors have been crafted. Two types of criteria exist: 1) Evaluation Criteria (not a “fatal flaw”; a “relative” indicator), and 2) Exclusion Criteria (a “fatal flaw”; an “absolute indicator”). The presentation explained the overall alternatives formulation and evaluation methodology (Attachment 2) and then reviewed the project objectives in detail.

The planning process must provide a defensible basis for selection of a range of alternatives and the preferred alternative. The Project Team will start by investigating five (5) landscape concepts:

- No Project/Initial Stewardship Plan (ISP) with Minimal Operations and Maintenance
- No Project/ISP with Full Operations and Maintenance
- Maximize Managed Pond Habitat
- Mix of Tidal Marsh and Managed Pond Habitat (assume 60/40 initially)
- Maximize Tidal Marsh Habitat

From these broad landscape concepts, refined alternatives will be crafted and evaluated. Presently, the PM Team is proposing to use a nine-point rating scale from “low –“ to “high +” and to graphically display the results to facilitate comparison and identify differences. Initially, the PM Team proposes to treat all detailed objectives equally and then explore varying the relative importance of selected detailed objectives. Blau concluded the presentation by proposing a suggested format for displaying how an alternative responds to each detailed objective.

10. *Public Comment*

No public comments were made as participants agreed to raise all questions at the various work group meetings, which were held later in the afternoon.

11. *Next Forum Meeting*

The next Forum meeting will be held June 24, 2004 at the Weeks Park Community Center in Hayward. Meeting materials and detailed directions to the venue will be sent out ahead of the meeting. The following upcoming meetings were announced:

- National Science Panel: April 20-21, 8 a.m. - 3:30 p.m.
San Francisco Bay Conservation and Development Commission
50 California Street, Suite 2600, San Francisco, McAteer-Petris Conf. Room
- Work Groups: May 25, time to-be-determined,
Centennial Hall, Hayward
- Stakeholder Forum: June 24, time to-be-determined
Weeks Park Community Center, Hayward

12. Stakeholder Forum Tasks

No.	Task Description	Responsible Individual(s)	Anticipated Completion Date	Status and Issues
1	Prepare and present overview of design consultant's workplan	PMT and consultants	2/18/04	Completed
2	Develop revised Forum Agreements in Principle	PMT	2/18/04	Adopted
3	Develop revised Project Goals and Objectives	PMT	2/18/04	Adopted
4	Review ISP Draft EIR/S	Interested parties	3/8/04	Completed
5	Update Forum Protocols	PMT/CCP	2/18/04	Adopted
6	Begin making presentations to and contacting constituent groups and organizations about the project. Be prepared to report back on your public outreach activity at the next Stakeholder Forum meeting.	Forum Members	6/04	Ongoing
7	Prepare for Local Government Forum	PMT/CCP	3/18/04	Completed
8	Update Project website with meeting materials and information on PWA Team	PMT/CCP	On-going	Pending
9	Post roster of the Regulatory Agency Group to the project website	PMT		Completed
10	Identify new Stakeholder Forum representatives for local government and environmental justice/community organization.	PMT/CCP	5/15/04	Pending

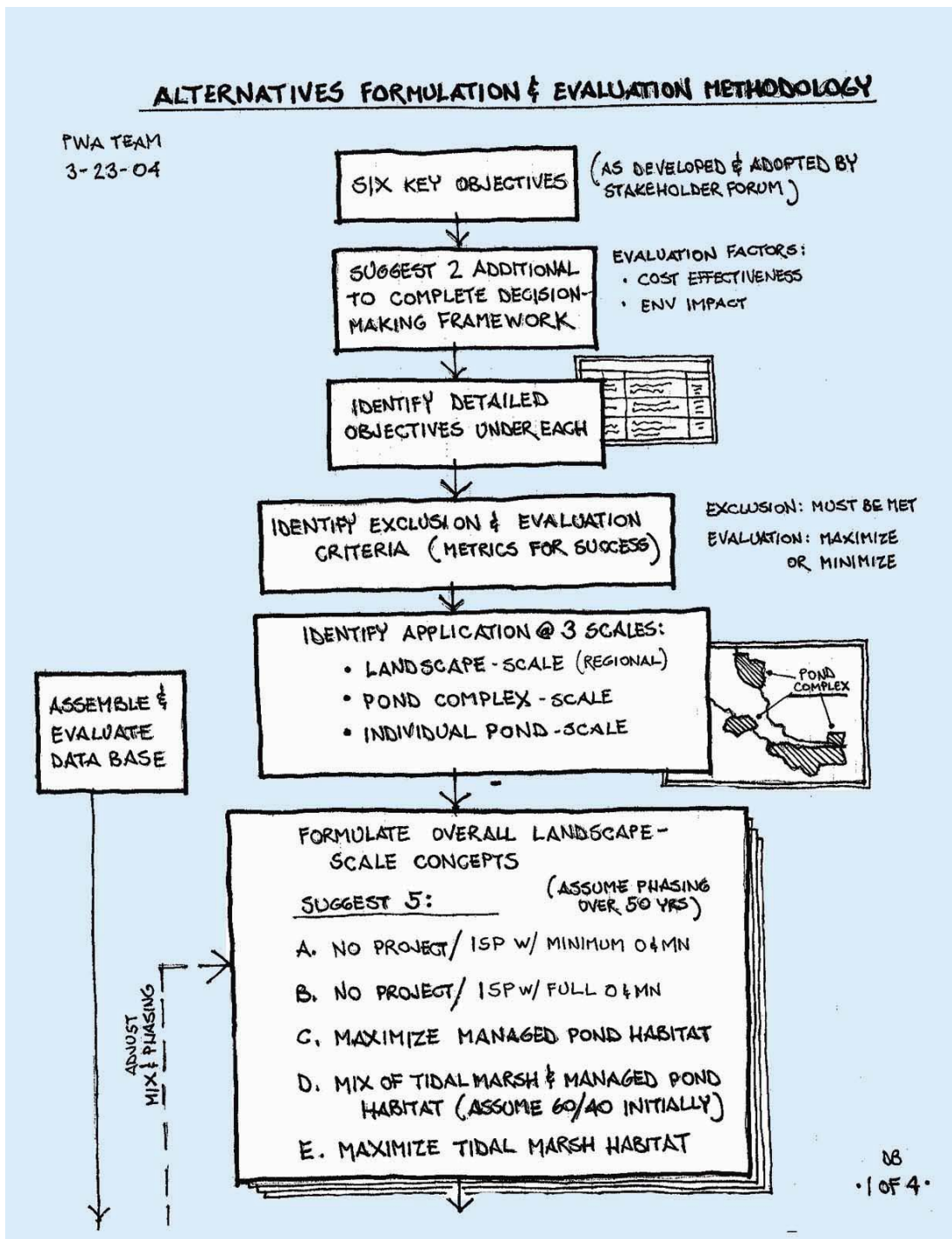
Note: The Stakeholder Forum Task List will be updated after each Forum meeting.

Attachment 1: Meeting Attendance

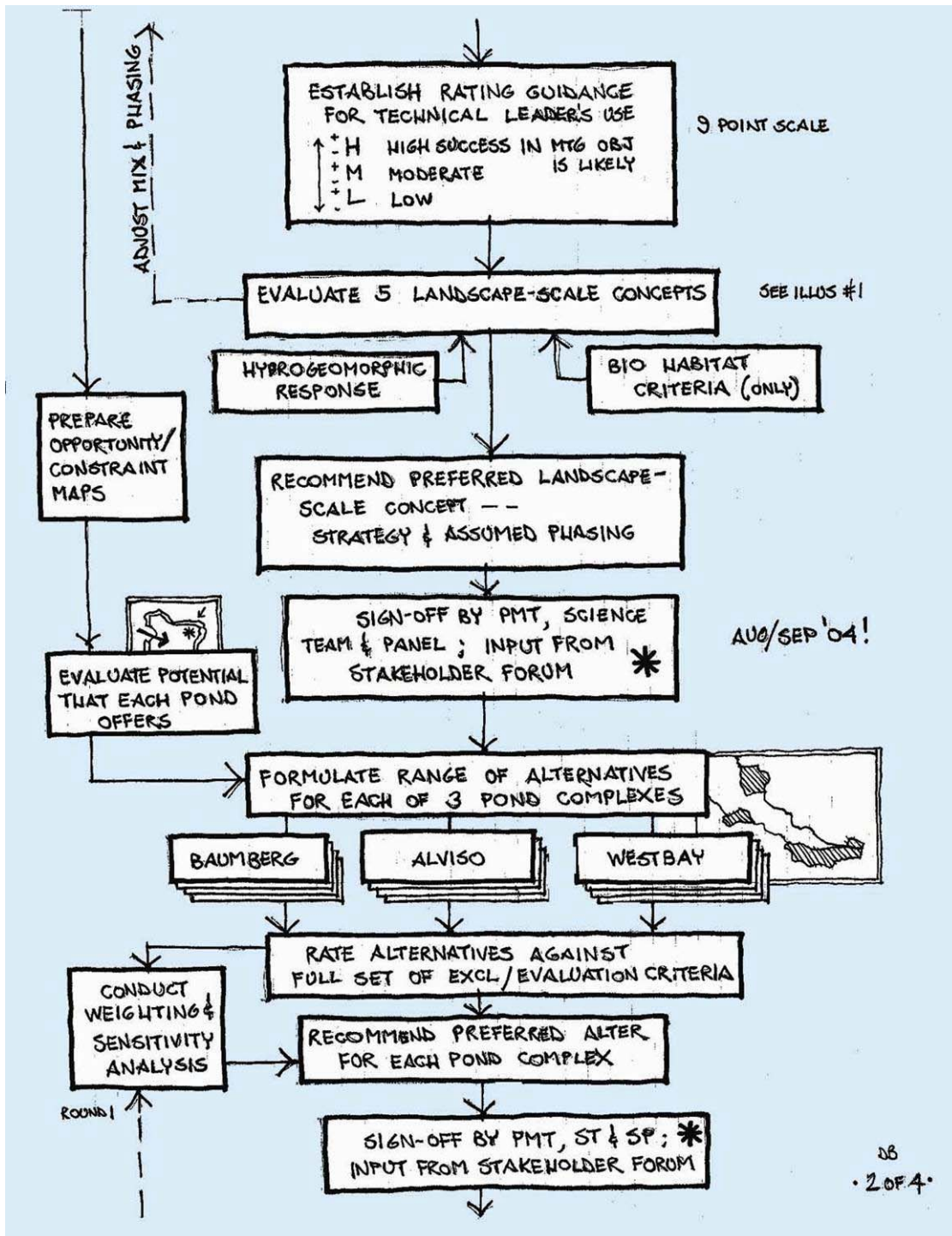
First Name	Last Name	Email	Company
Chris	Alderete	calderete@mail.arc.nasa.gov	NASA
Bernardette	Arellano	bernardette.arellano@mail.house.gov	Senator Mike Honda's office
David H.	Blau, Sr.	blaud@edaw.com	EDAW, Inc.
Felicia	Borrego	felicia@savesfbay.org	Save The Bay
Bill	Bousman	barlowi@earthlink.net	
Andree	Breaux	ab@rb2.swrcb.ca.gov	SF RWQCB
Craig	Breon	craig@scvas.org	Santa Clara Valley
Dan	Bruinsma	dan.bruinsma@sanjoseca.gov	City of San Jose, Env.
Steve	Carroll	scarroll@ducks.org	Ducks Unlimited
Joe	Dillon	joseph.j.dillon@noaa.gov	NOAA -National Marine
Ron	Duke	rduke@harveyecology.com	H.T. Harvey & Associates
Peter	Dunne	pdunne@stanpac.com	Eden Shores Community
Beth	Dyer	bdyer@valleywater.org	Santa Clara Valley Water
Katie	Field	travelkatiebear@yahoo.com	
Anna	Frankel	frankel7@berkeley.edu	
Bill	Gaines	bill_gaines@calwaterfowl.org	California Waterfowl
Eric	Hansen	EGH5@PGE.COM	PG&E
Carin	High	howardhigh1@comcast.net	Citizens Committee to
Melissa	Hippard	melissa.hippard@sierraclub.org	Sierra Club, Loma Prieta
Amy	Hutzel	ahutzel@scc.ca.gov	Coastal Conservancy
Ellen	Johnck	ellen@bayplanningcoalition.org	Bay Planning Coalition
Ralph	Johnson	joh19701@comcast.net	Alameda County Flood
Joseph	LaClair	joel@bcdc.ca.gov	BCDC
Mark	Lacy	mlacy@mail.arc.nasa.gov	NASA/ PAI
Thomas	Laine	Hard Copy	Alviso Resident
Florence	LaRiviere	florence@refuge.org	Citizen's Committee to
Mondy	Lariz	coordinator@spcwc.org	Stevens & Permanente
Ryan	Lau	str8shiznitofied@aol.com	
Kirk	Lenington	klenington@openspace.org	Midpeninsula Regional
David	Lipsetz	DavidL@abag.ca.gov	San Francisco Bay Trail
Libby	Lucas	jlucas1099@aol.com	League of Women Voters
Janet	McBride	Janetm@abag.ca.gov	San Francisco Bay Trail
Jim	McGrath	jmcgrath@portoakland.com	Port of Oakland
Eileen	McLaughlin	WildlifeStewards@aol.com	Wildlife Stewards
Julia	Miller	juliacitycouncil@aol.com	City of Sunnyvale
John	Nguyen	wasabi716@hotmail.com	
Elizabeth	Nixon	enixon@sbcglobal.net	
Sandy	Olliges	solliges@mail.arc.nasa.gov	NASA Ames Research
Terry	Palmisano	tpalmisano@dfg.ca.gov	DFG
Ed	Penny	cpenny@ducks.org	Ducks Unlimited
Donna	Plunkett	plunkettd@edaw.com	EDAW, Inc.
John	Reese	jreese@ch2m.com	CH2M HILL
Alice	Ringer	alice.ringer@cityofpaloalto.org	Santa Clara Basin
Russ	Robinson	russ1011@ix.netcom.com;	California Recreational
Michael	Rogers	m.m.rogers@att.net	NASA Ames
John	Rusmiel	acmad@mosquitoes.org	Alameda County Mosquito

First Name	Last Name	Email	Company
Richard	Santos	rsantos@valleywater.org	Santa Clara Valley Water
Michael	Sellors	msellors@audubon.org	National Audubon Society
Lisa	Sniderman	lisab@bcdc.ca.gov	BCDC
Louisa	Squires	lsquires@valleywater.org	Santa Clara Valley Water
Denise	Stephens	denise_s@pacbell.net	Mayne Elementary School
Daniel	Strickman	daniel.strickman@deh.co.scl.ca.us	Santa Clara County Vector
Kirsten	Struve	kirsten.struve@sanjoseca.gov	City of San Jose, Santa
Caitlin	Sweeney	caitlins@bcdc.ca.gov	BCDC
Samantha	Treadwell	stread@yahoo.com	
Don	Weden	weden@ix.netcom.com	

Attachment 2: Alternatives Formulation and Evaluation Methodology



Attachment 2: Alternatives Formulation and Evaluation Methodology – continued



Attachment 2: Alternatives Formulation and Evaluation Methodology – continued

