



South Bay Salt Pond Restoration Project

Restoring the Wild Heart of the South Bay

Phase 2 Eden Landing Ecological Reserve Scoping Meeting for EIS/EIR

June 30, 2016

Today's Purpose

- Introduction to Scoping / Purpose of Meeting
- South Bay Salt Pond Restoration Project
 - Project Overview
- EIS/EIR
 - Programmatic and Tiering
 - Phase 2 Alternatives
- Break Out Stations and Process

Policy Framework

- NEPA:
 - Framework for environmental planning
 - Process for disclosure of potential adverse effects on environmental resources
- CEQA
 - Disclose significant effects of proposed activities
 - Requires avoiding or reducing effects by implementing feasible alternatives or mitigation measures.
- Both have opportunities for public participation

What is Scoping?

- First step in public participation
- Identify significant issues
- Use them to:
 - Refine purpose and need of the action
 - Develop/modify alternatives to be considered or not to be considered
 - Define impacts to be addressed

Purpose of Scoping

- Explain:
 - Overall project, its purpose and need, and possible actions
 - Optional methods for public / stakeholder participation
 - Steps and timing of NEPA and CEQA processes compliance
- Request public input on the scope and alternatives for EIS/EIR

Purpose of Scoping

- Open process for identifying
 - Alternatives or project components to consider
 - Issues to address in the impacts analysis
 - Information or data to include
 - Resources that may be affected
 - Topics that concern various stakeholders
 - Geographic areas to study
- Inputs made available to public as an appendix to the EIS/EIR

Scoping Is **Not**

- Your final opportunity to comment on the project
- A presentation of the preferred alternative, the actual designs, or all possible effects or impacts

How Will We Use Your Input?

- Refine alternatives as needed to capture range of possible impacts
- Make sure we address resources, issues, and potential impacts of concern to you
- Document your comments for future use or reference






South Bay Salt Pond Restoration Project

Restoring the Wild Heart of the South Bay

2002 Salt Pond Acquisition Area

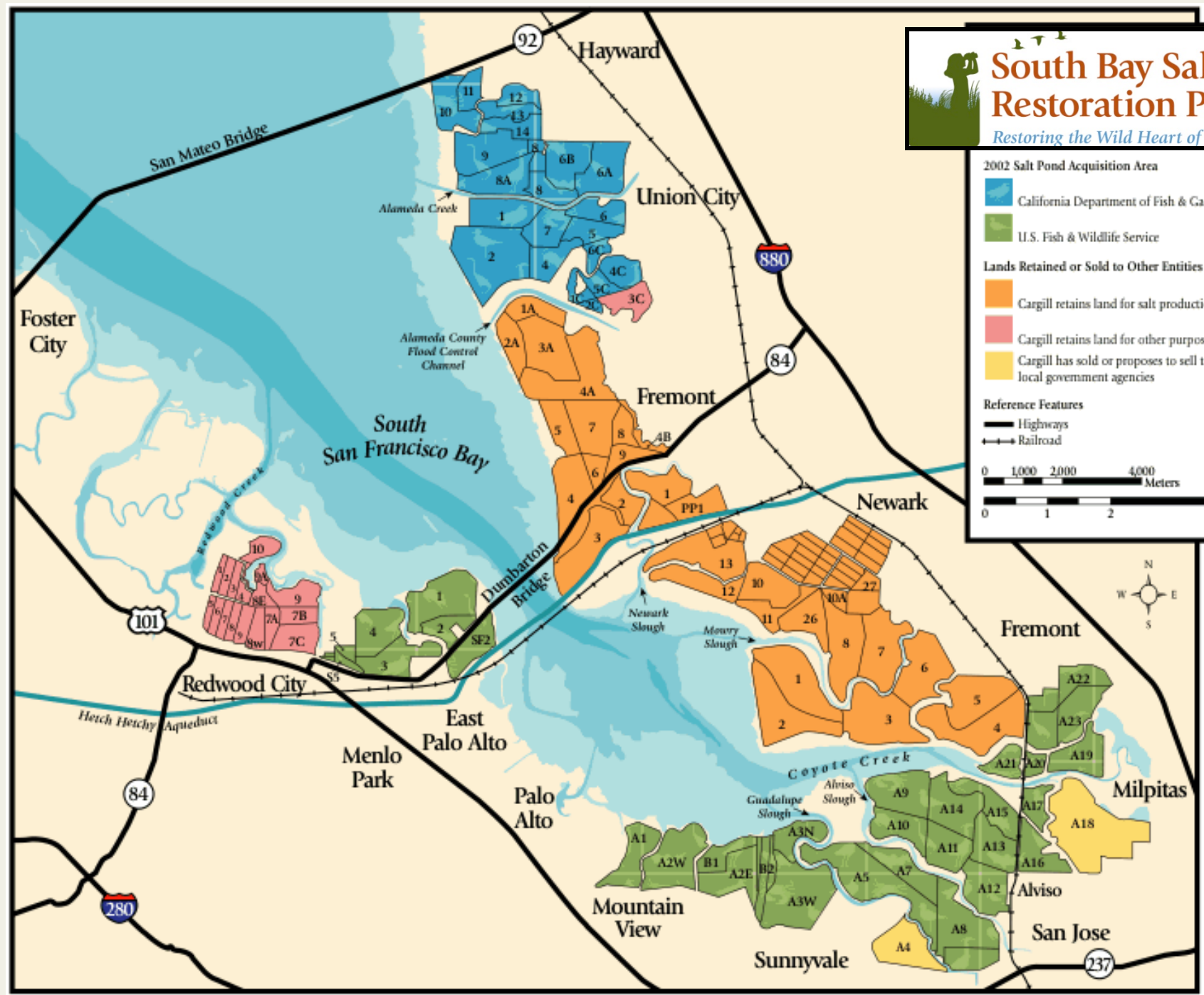
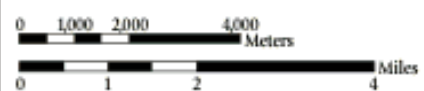
-  California Department of Fish & Game
-  U.S. Fish & Wildlife Service

Lands Retained or Sold to Other Entities

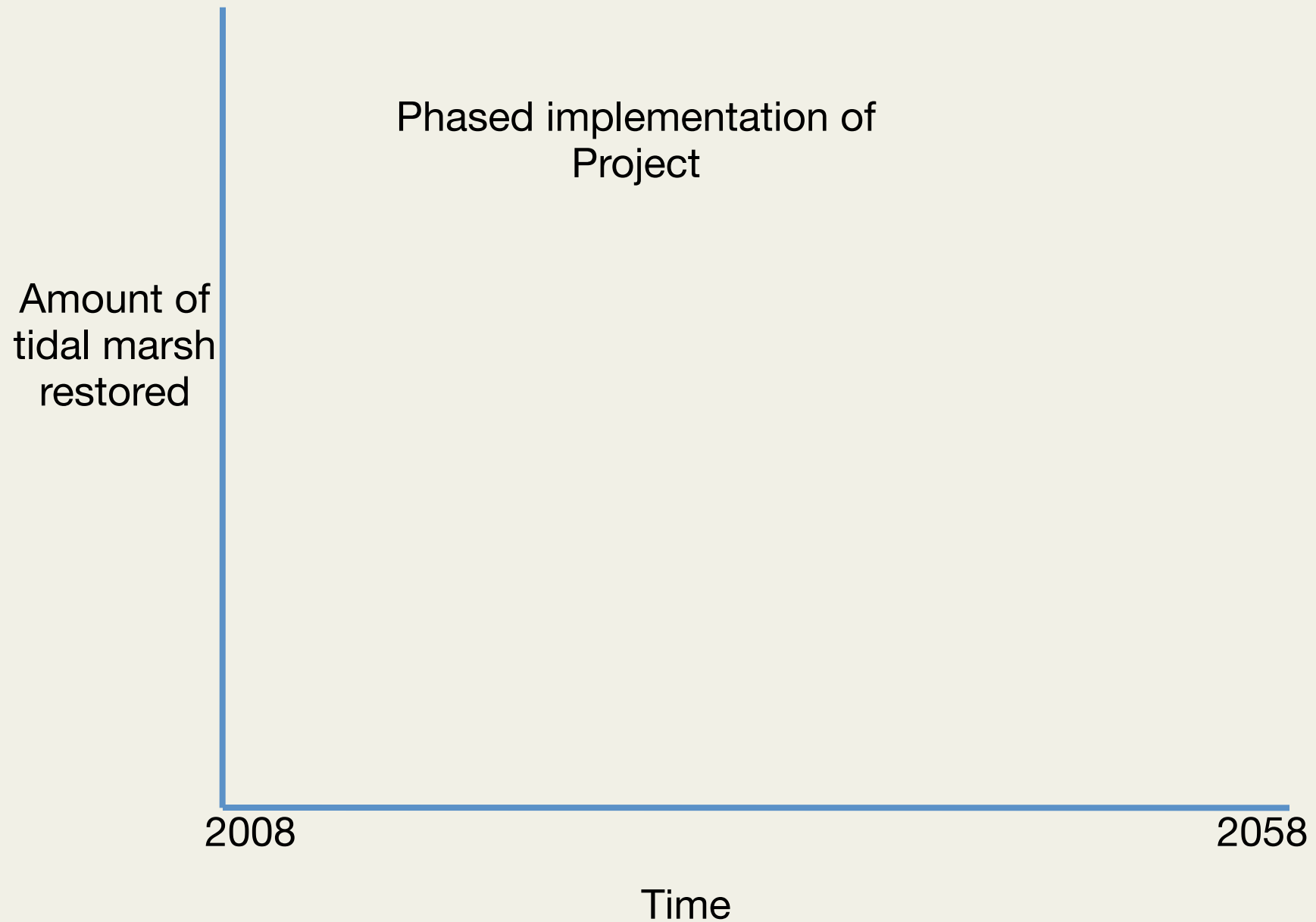
-  Cargill retains land for salt production
-  Cargill retains land for other purposes
-  Cargill has sold or proposes to sell to local government agencies

Reference Features

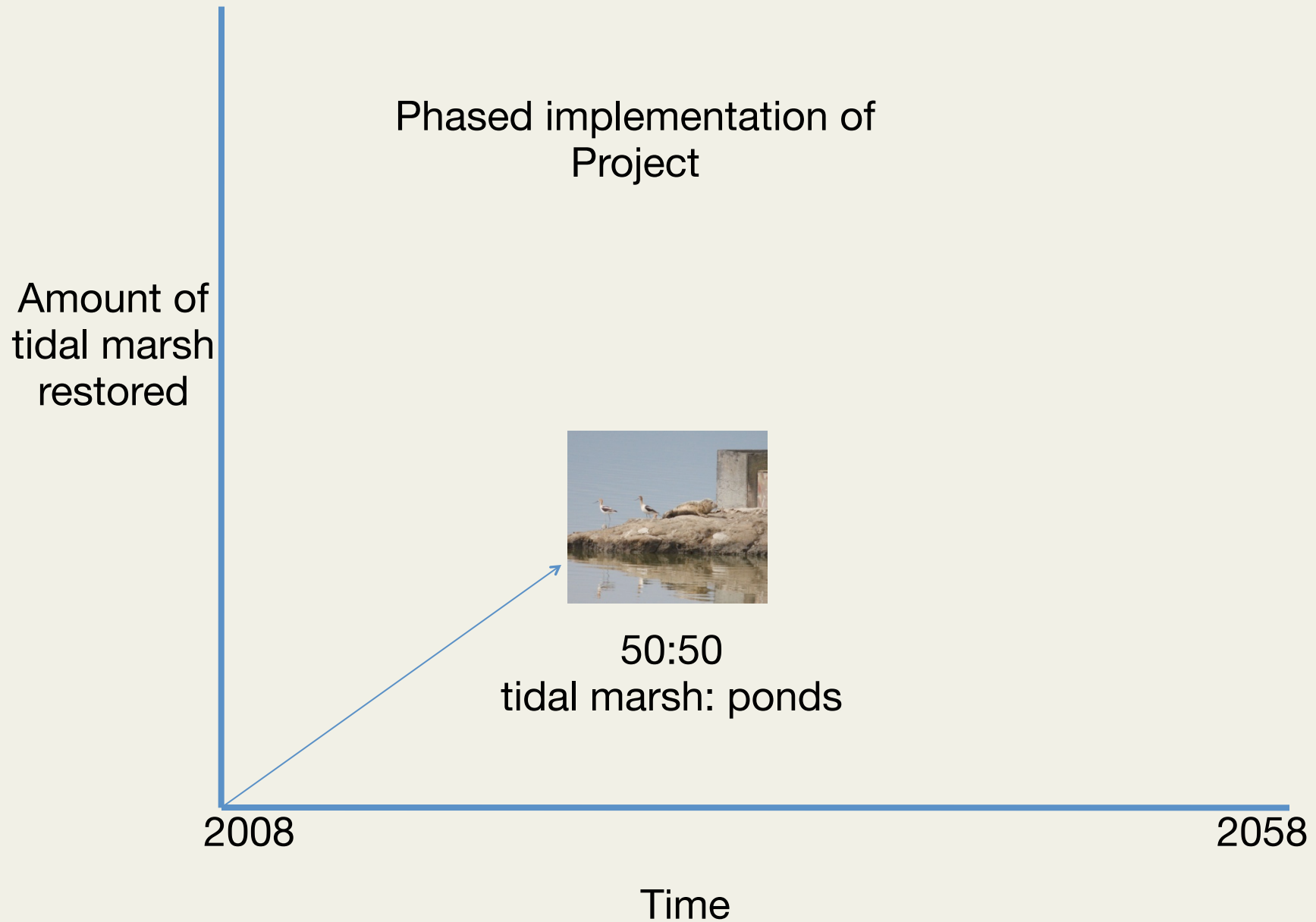
-  Highways
-  Railroad



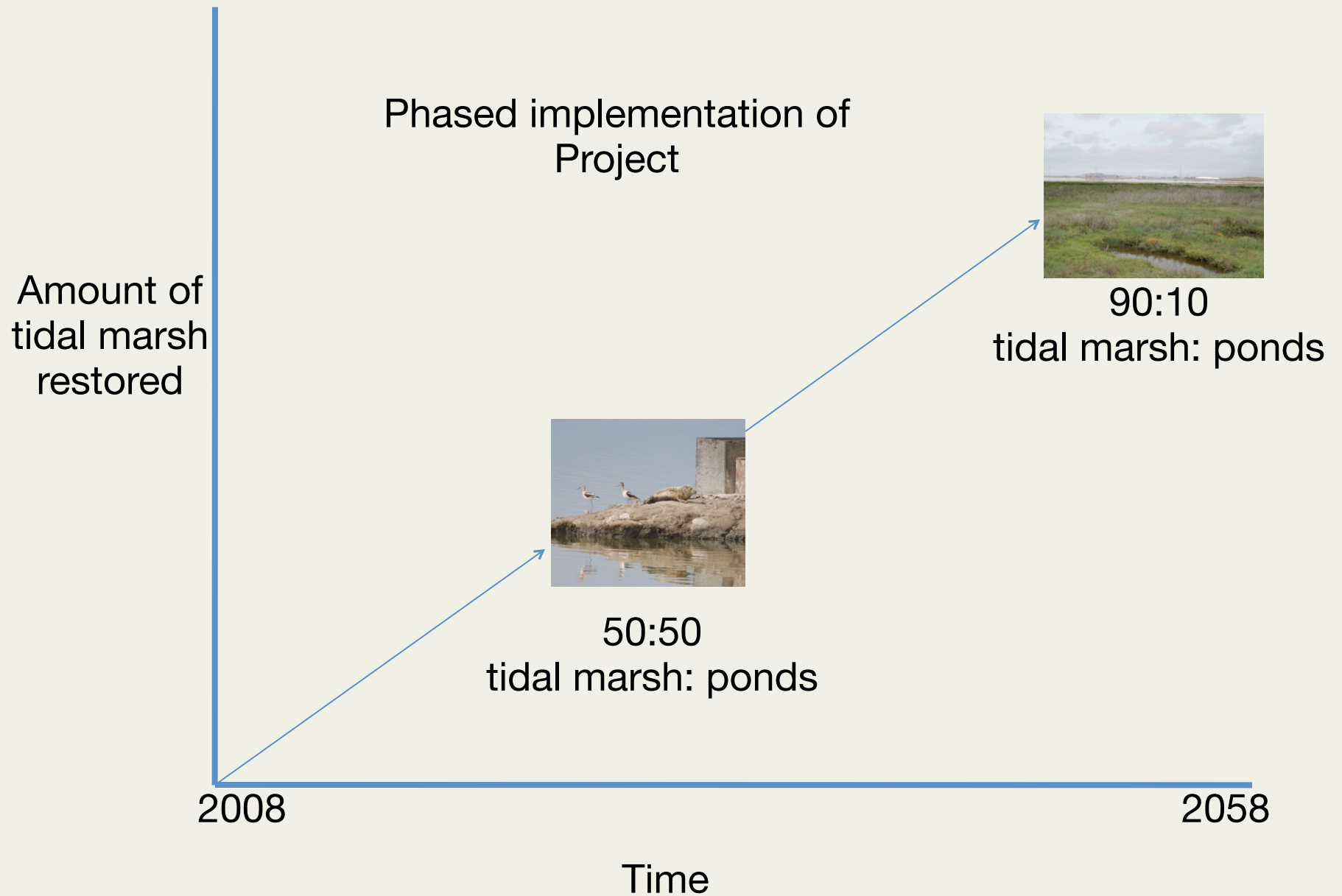
Adaptive Management Restoration



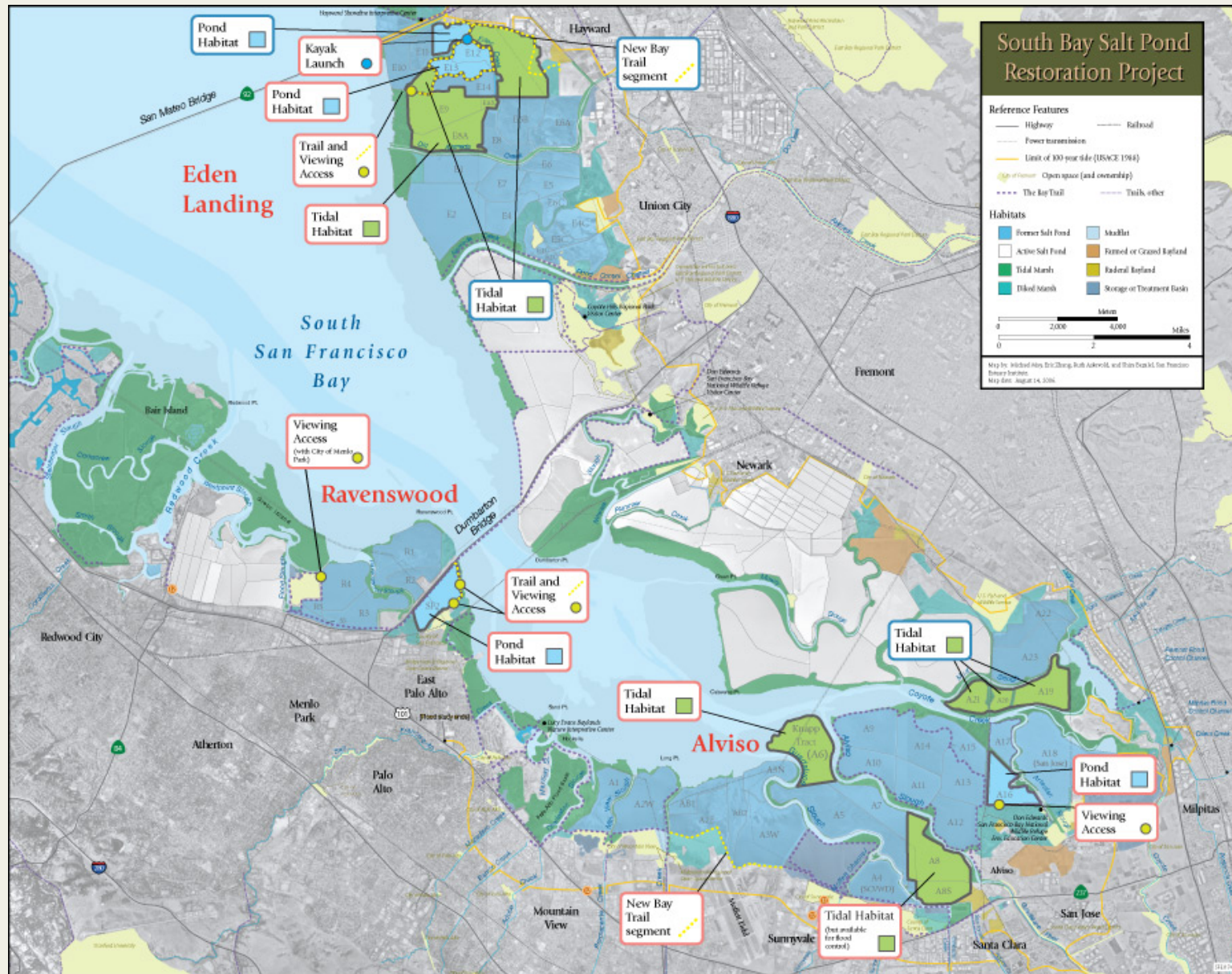
Adaptive Management Restoration



Adaptive Management Restoration



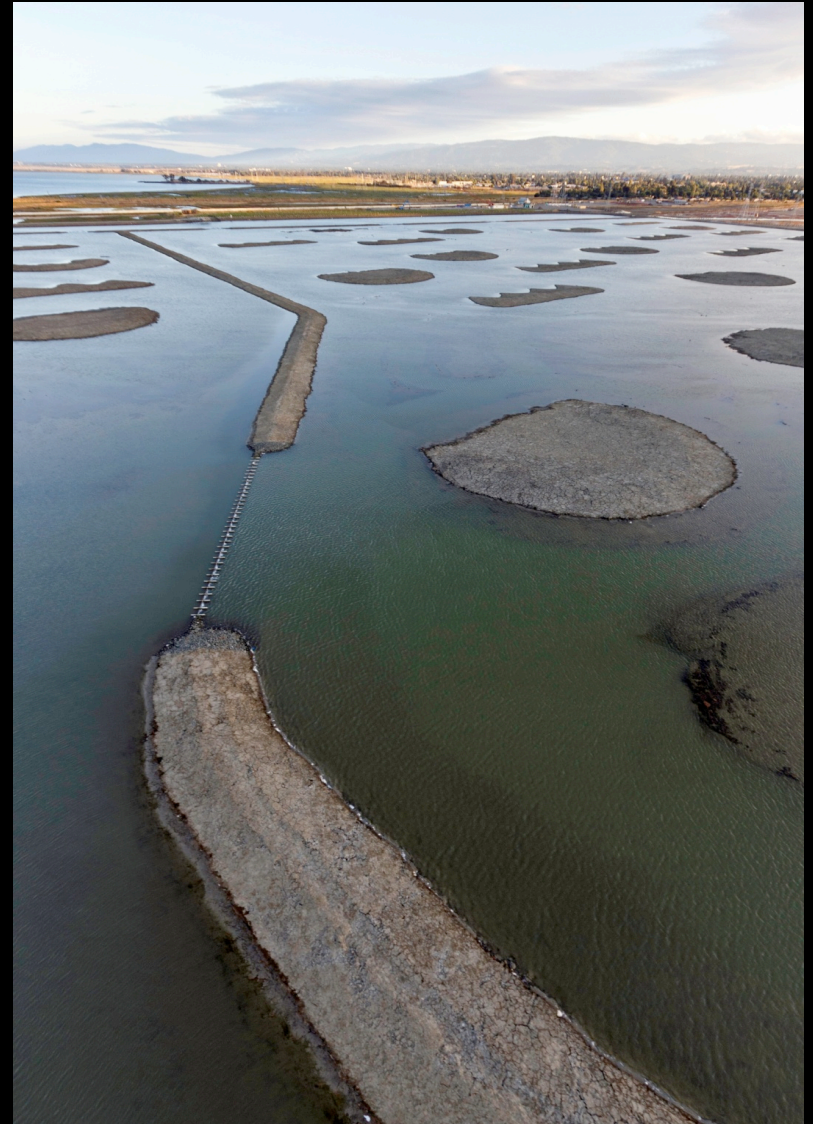
Tracking our Progress: Phase One Actions





1,600 acres tidal restoration
1,440 acres muted tidal

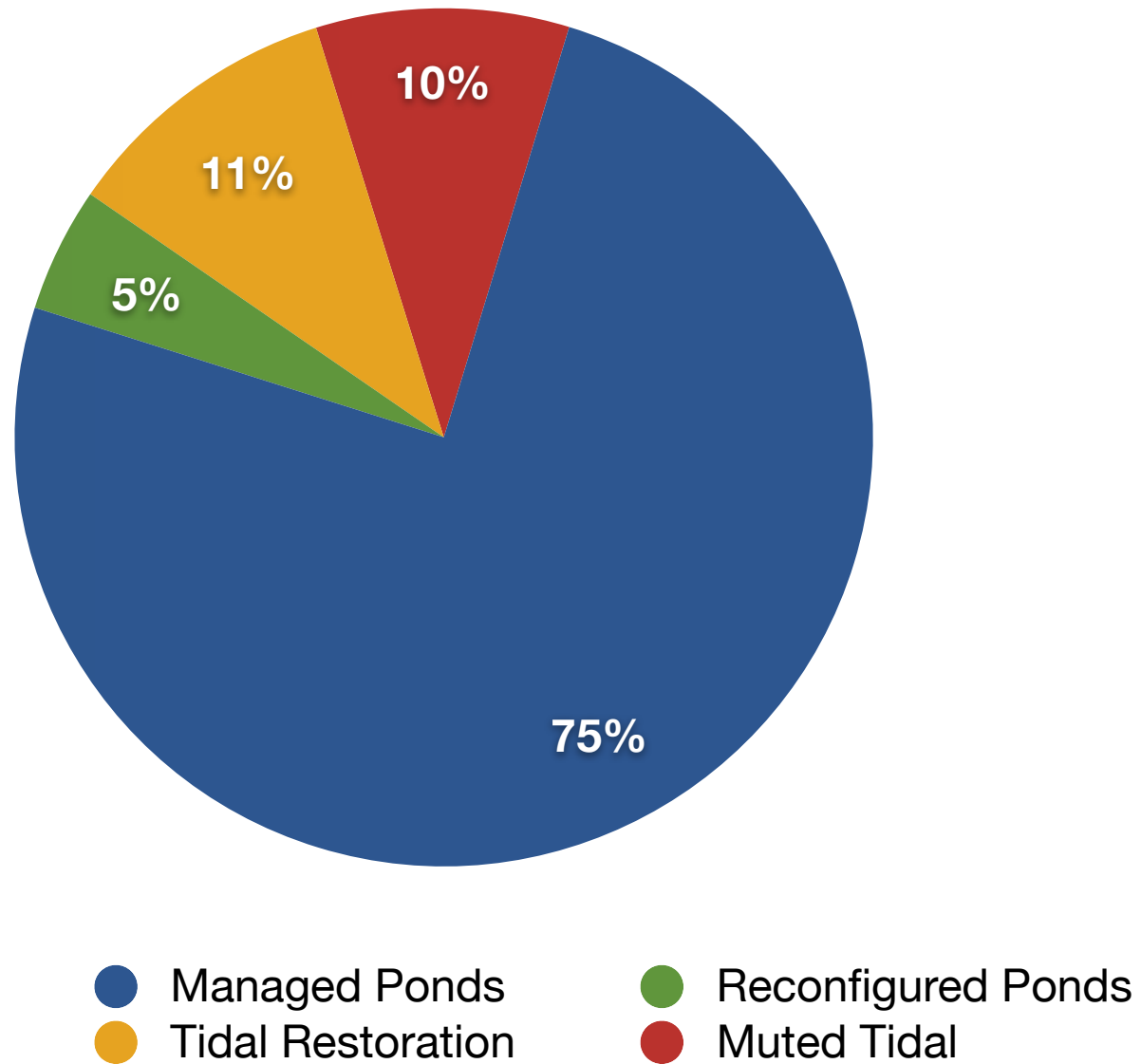
710 acres reconfigured ponds



7 miles of new trails



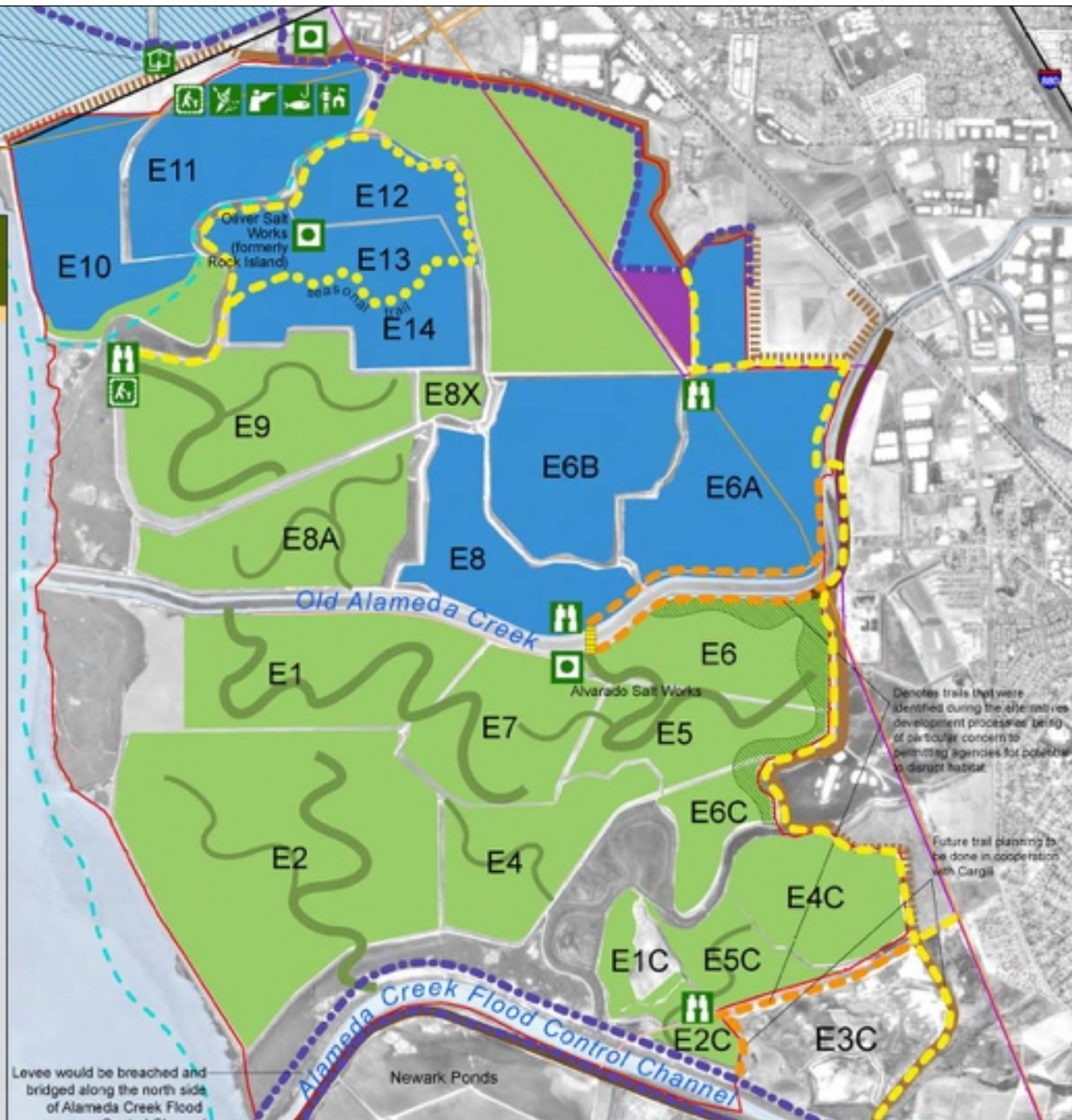
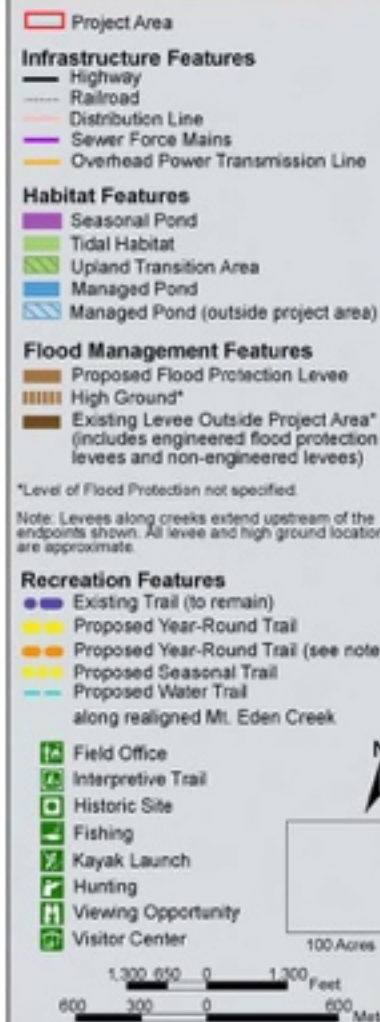
SBSP Phase 1



Phase 2 Guiding Principles

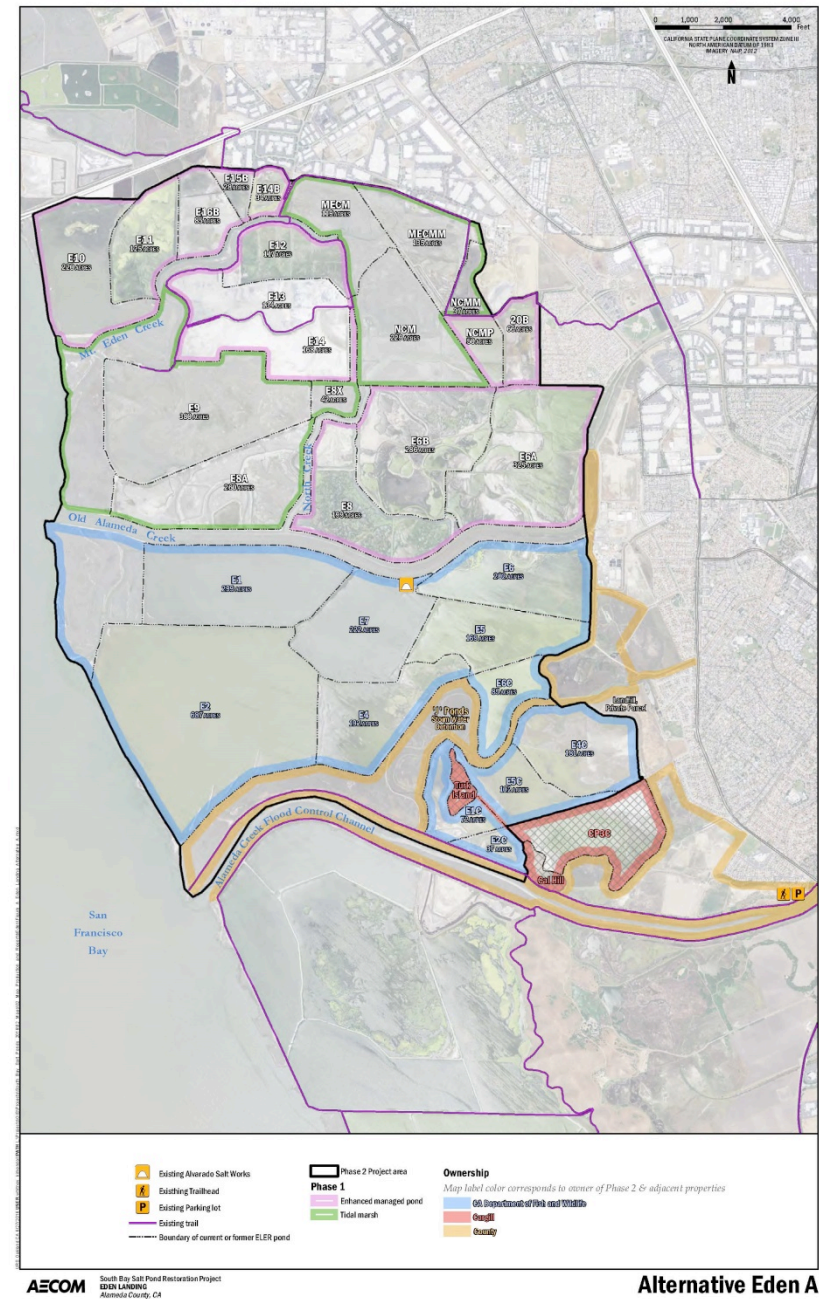
- No actions that will increase flood risk
- Progress restoration toward 50-50 vision (from 2007 EIS/R)
- Add public access features, especially Bay Trail spine

South Bay Salt Pond Restoration Project



Phase 2 Concepts

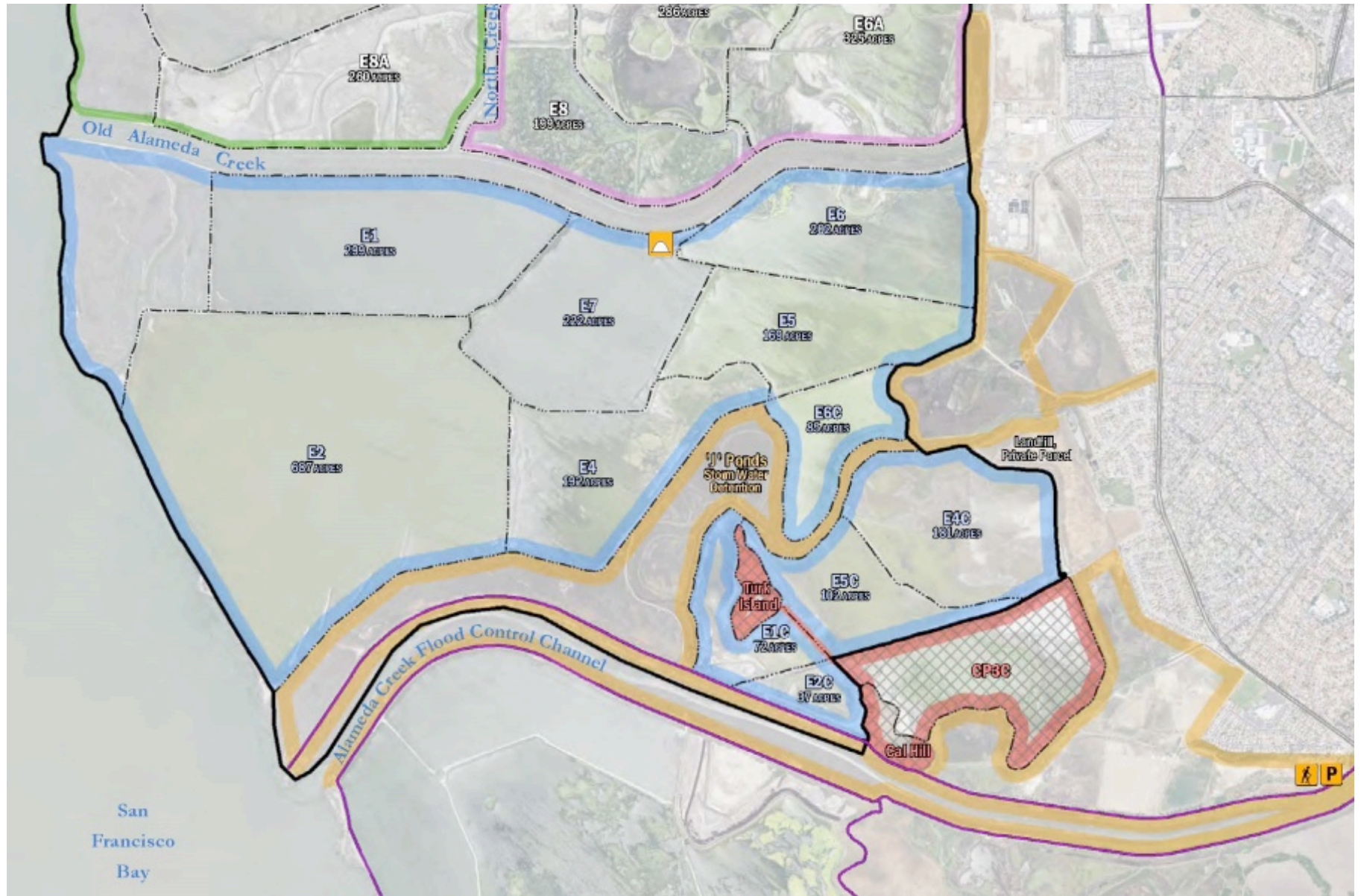
- All of southern Eden Landing
- Three different locations for levee enhancements
- Range of habitat restoration options
- Different trail routes



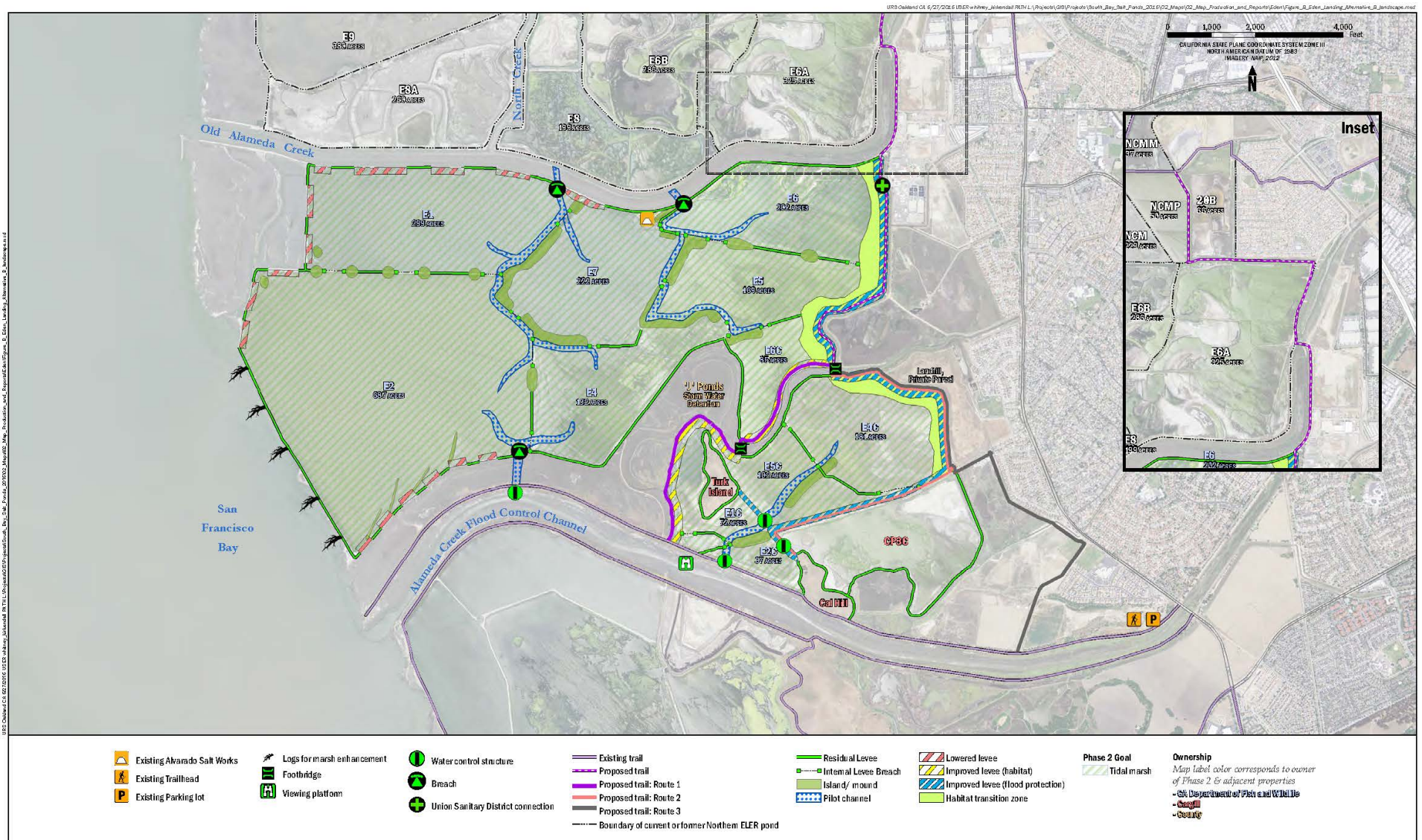
Phase 2 Concepts

- 1 No-Action/No Project Alternative
- 3 Action Alternatives
 - Maps of which are preliminary
 - Modified based on scoping input
 - Can be recombined

Alternative A: No-Action



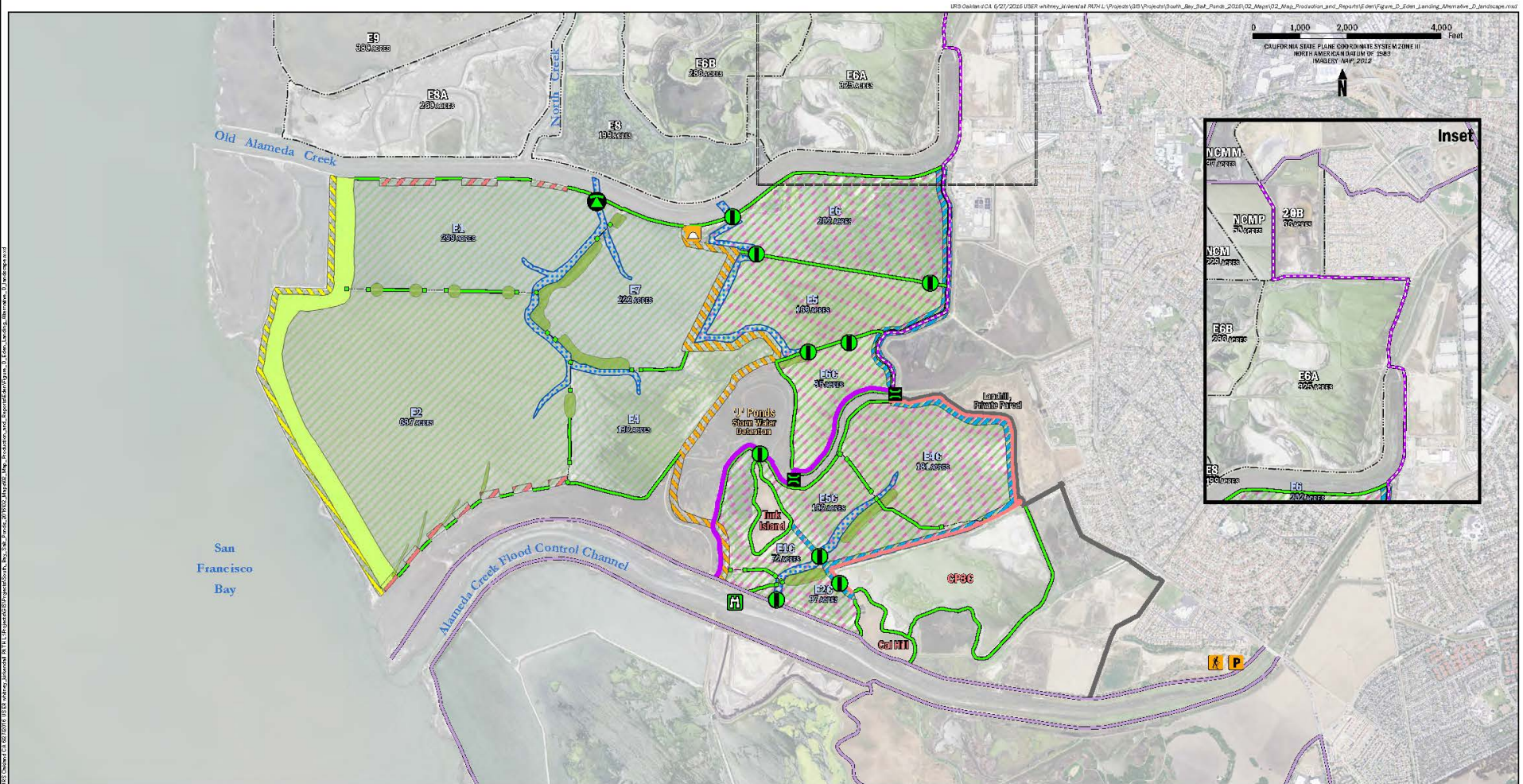
Alternative B: Unstaged, All Tidal



80 Oakland CA 92721 US ER whtney@Gmail.com South Bay_Sat_Ponds_Map_201602_Map.pdf C_Eden_Landing_Alternative_C_Jrds.cape.ncd



Alternative D: Staged Tidal Rest'n



Existing Alvarado Salt Works
Existing Trailhead
Existing Parking lot

Viewing platform
Water control structure
Breach

Existing trail
Proposed trail: Route 1
Proposed trail: Route 2
Proposed trail: Route 3
Boundary of current or former ELER pond

Residual levee
Internal Levee Breach
Habitat transition zone
Island/ mound
Pilot channel

Lowered levee
Improved levee (flood protection)
Improved levee (habitat)
Temporary levee

Phase 2 Goal
Managed Pond, then tidal marsh
Tidal marsh

Ownership
Map label color corresponds to owner of Phase 2 & adjacent properties
- C&A (Department of Fish and Wildlife)
- County
- County

Primary Evaluation Criteria

- Likelihood of progress toward Project objectives
- Opportunities for Adaptive Management studies
- Value in building Project support
- Readiness to proceed / not dependent on precedent actions
- Input from stakeholders (over many years)

NEPA/CEQA Tiering

- Joint NEPA/CEQA process
- Tiering from the Programmatic EIS/EIR uses same:
 - Objectives, Purpose and Need
 - Significance criteria
 - Mitigation measures
- Impact analysis more detailed than Programmatic EIS/EIR because it's Phase 2-specific
 - Like Phase 1 actions but in a new document
 - Analogous to Phase 2 document for the Refuge

Public Participation

- Scoping comments encouraged on subjects:
 - Range of alternatives
 - Impacts to include in the analysis
 - Mitigation measures
 - Other issues, thoughts, or ideas to include
- Opportunities for input and comment
 - Scoping process (next few weeks)
 - Draft EIS/EIR (Oct/Nov 2016)
 - Final EIS/EIR (spring 2017)

Methods for Input

- Comment cards at today's meeting
- Mail comment card after meeting
- Website comment form
- Letter – address in NOI and NOP
- Email – address in NOI and NOP

To make your comments an “official” part of the record, they must be made in writing.

Meeting Stations – Layout

- Habitat Restoration
- Flood Control
- Public Access and Recreation