

Phase 2: Eden Landing

Stakeholder Forum/Working Groups 8-15-17 Meeting

Alternatives Include the Following Possible Phase 2 Actions:

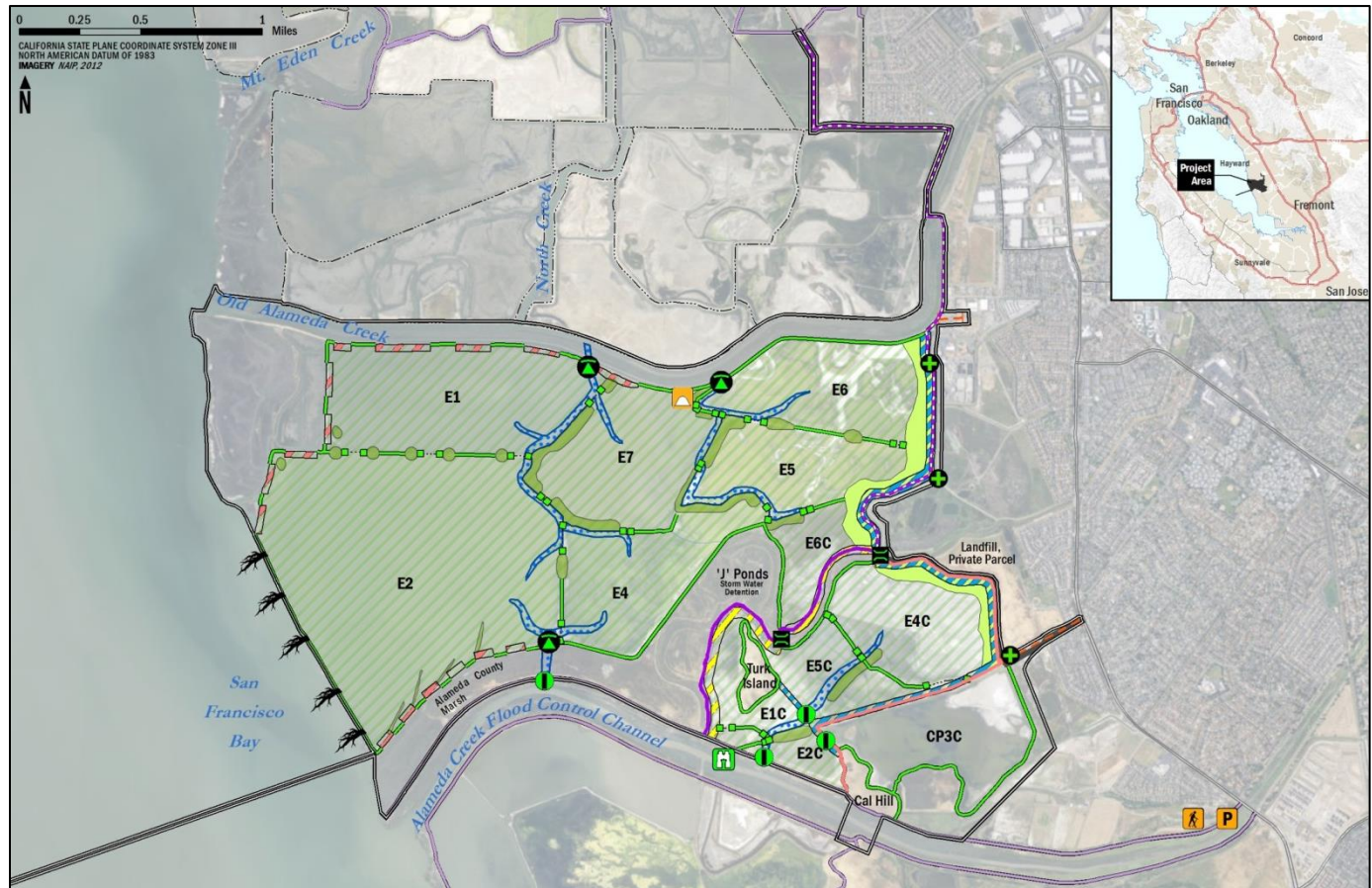
1. **Tidal Marsh Restoration:** 2,500 acres of ponds (Ponds E1-E7, E1C, E2C, E4C and E5C) are being analyzed for restoration, either all at once, in phases, or only the four western ponds (E1, E2, E4, and E7).
2. **Habitat Enhancement:** Construction of nesting islands and upland transition zones.
3. **Flood Risk Management:** Modification of levees and berms to maintain or improve flood protection.
4. **Public Access:** Additions of trails and viewing platforms, including new Bay Trail spurs and portions of the Bay Trail spine; multiple bridges; and an interpretive display at the historic Alvarado Saltworks.

Four Alternatives under Consideration

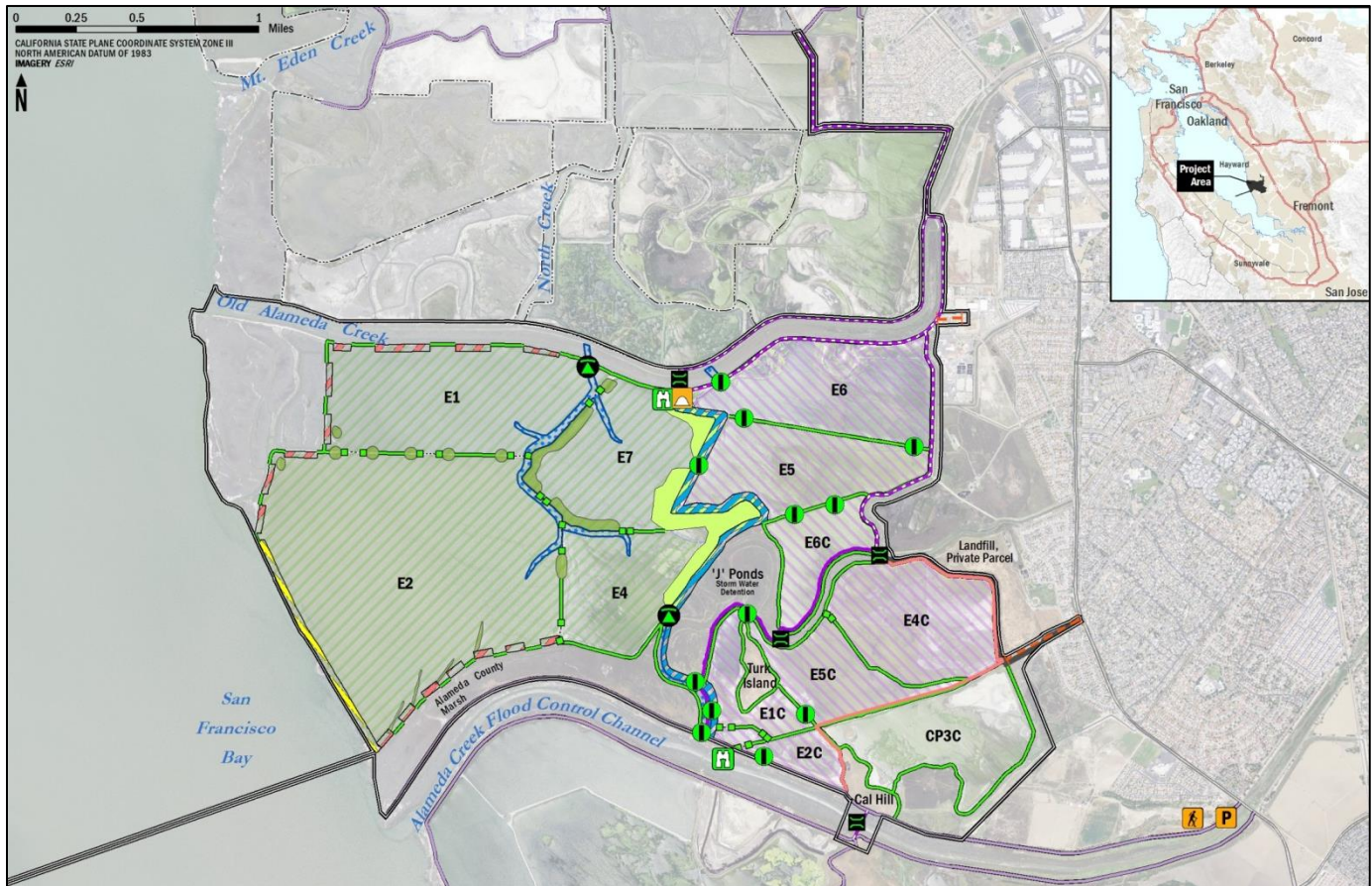


Alternative A: No Action

Alternative B: Unstaged, All Tidal



Alternative C: Mix of Marsh & Ponds



Alternative D: Staged Tidal Marsh

