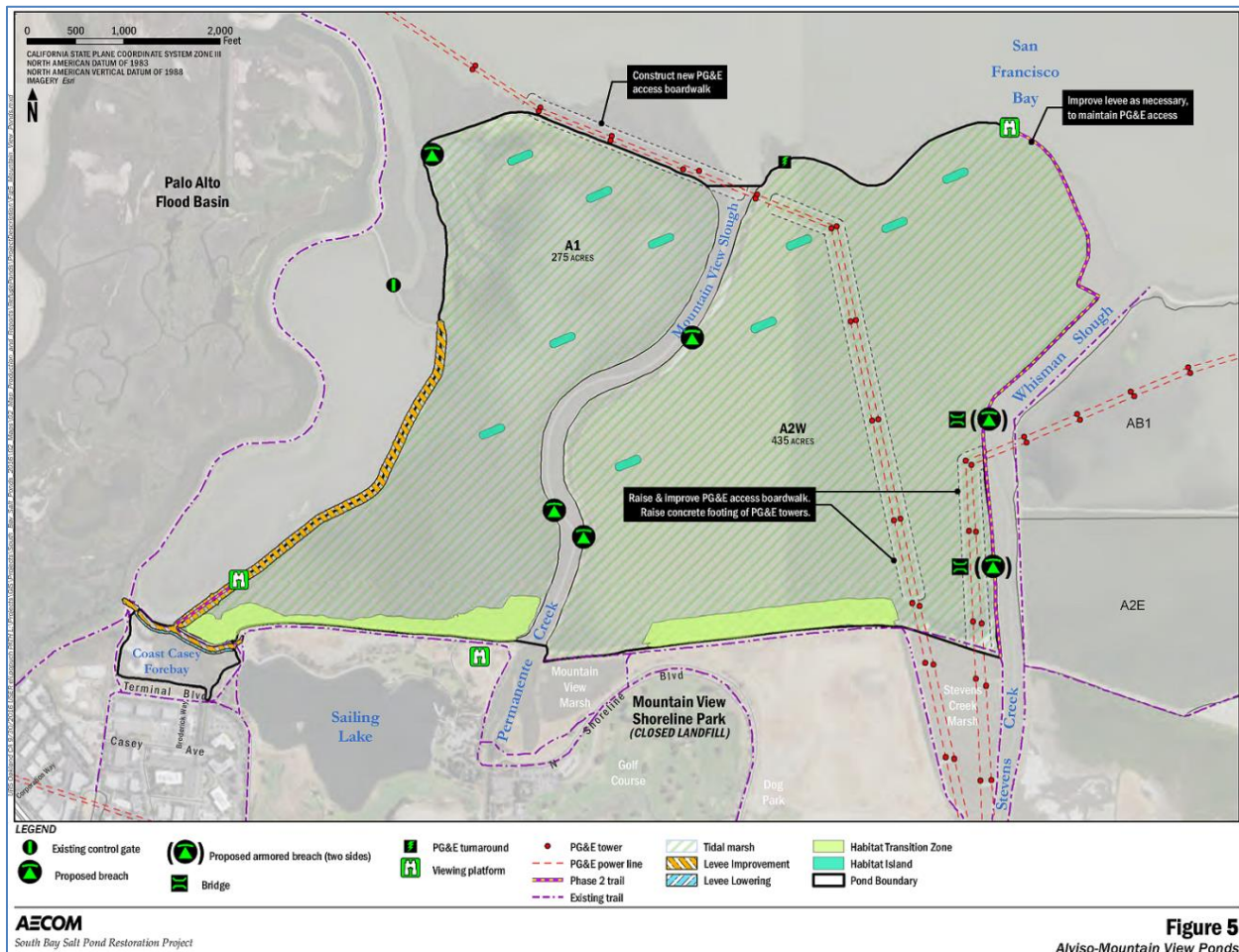


## Phase 2: Mountain View A1 & A2W Ponds, Alviso Stakeholder Forum/Working Groups 8-15-17 Meeting

### Preferred Alternative:



### Planned Phase 2 Actions:

1. **Restoration:** Breach levees to open the two ponds to the Bay to allow restoration of about 700 acres of tidal marsh.
2. **Habitat Enhancement:** Build 6 to 10 habitat islands for birds and construct 7 acres of marsh-upland transition habitat along Mountain View Shoreline Park.
3. **Public Access:** Build a trail along Stevens Creek/Whisman Slough to the east of Pond A2W, including two bridges, to a viewing platform on the Bay. Add viewing platforms near the Mountain View Sailing Lake by Permanente Creek and on the levee between Pond A1 and Charleston Slough. Rebuild existing Coast Casey Forebay trail, viewing platform, benches and signs.
4. **Flood Protection:** Raise and improve the levees along Coast Casey Forebay and the southern end of Charleston Slough.
5. **Imported Fill:** Levee improvements, islands, and new transitional habitat will require the import of about 312,000 cubic yards of fill.