

Phase 2: Ravenswood Ponds Stakeholder Forum/Working Groups 8-15-17 Meeting

Preferred Alternative:

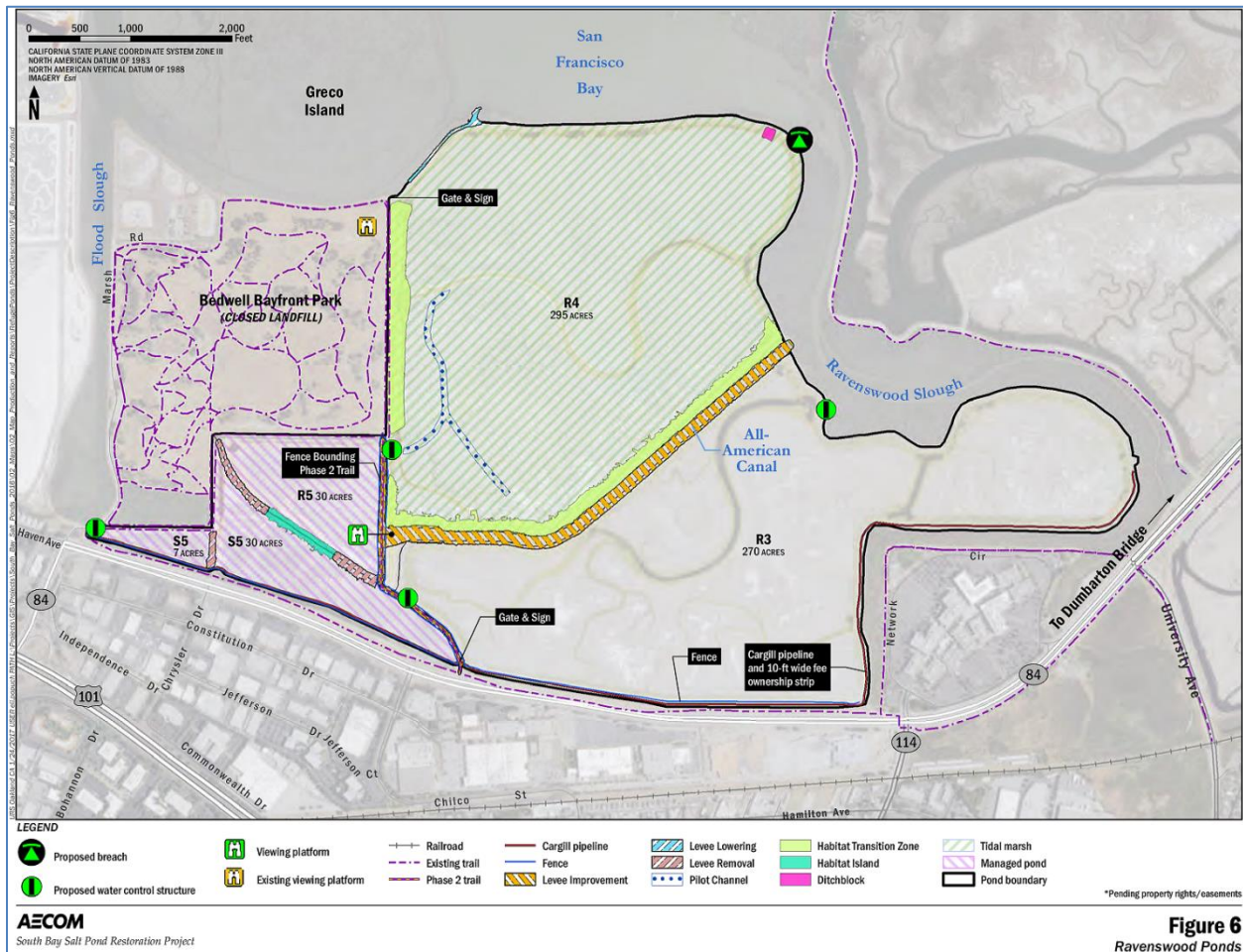


Figure 6
Ravenswood Ponds

Planned Phase 2 Actions:

1. **Restoration: Pond R4.** Breach the levee to connect R4 to the Bay to allow restoration of tidal marsh. Along Bedwell Bayfront Park and the All American Canal levee, develop 8 acres of marsh-upland transition habitat for wildlife to escape storm surges and sea level rise.
2. **Habitat Enhancement: Ponds R5/S5 and R3.** Join ponds, add an island for birds, and manage the ponds as shallow year-round habitat for dabbling ducks and small shorebirds. Improve the All American Canal levee to protect Pond R3, which will be managed for western snowy plovers.
3. **Public Access:** Build a new recreational trail from the Bay Trail on the Bayfront Expressway to the southern edge of Bedwell Bayfront Park, creating a loop around Ponds R5/S5, and add a viewing platform at the junction of that trail and the All American Canal levee.
4. **Imported Fill:** New transition habitat and levee work will require import of about 267,000 cubic yards of fill.