



# South Bay Salt Pond Restoration Project

*Restoring the Wild Heart of the South Bay*



**Changes in Management of Pond A8 in Response to Mercury Results**



Before



During





Photo Credit: Chris Benton









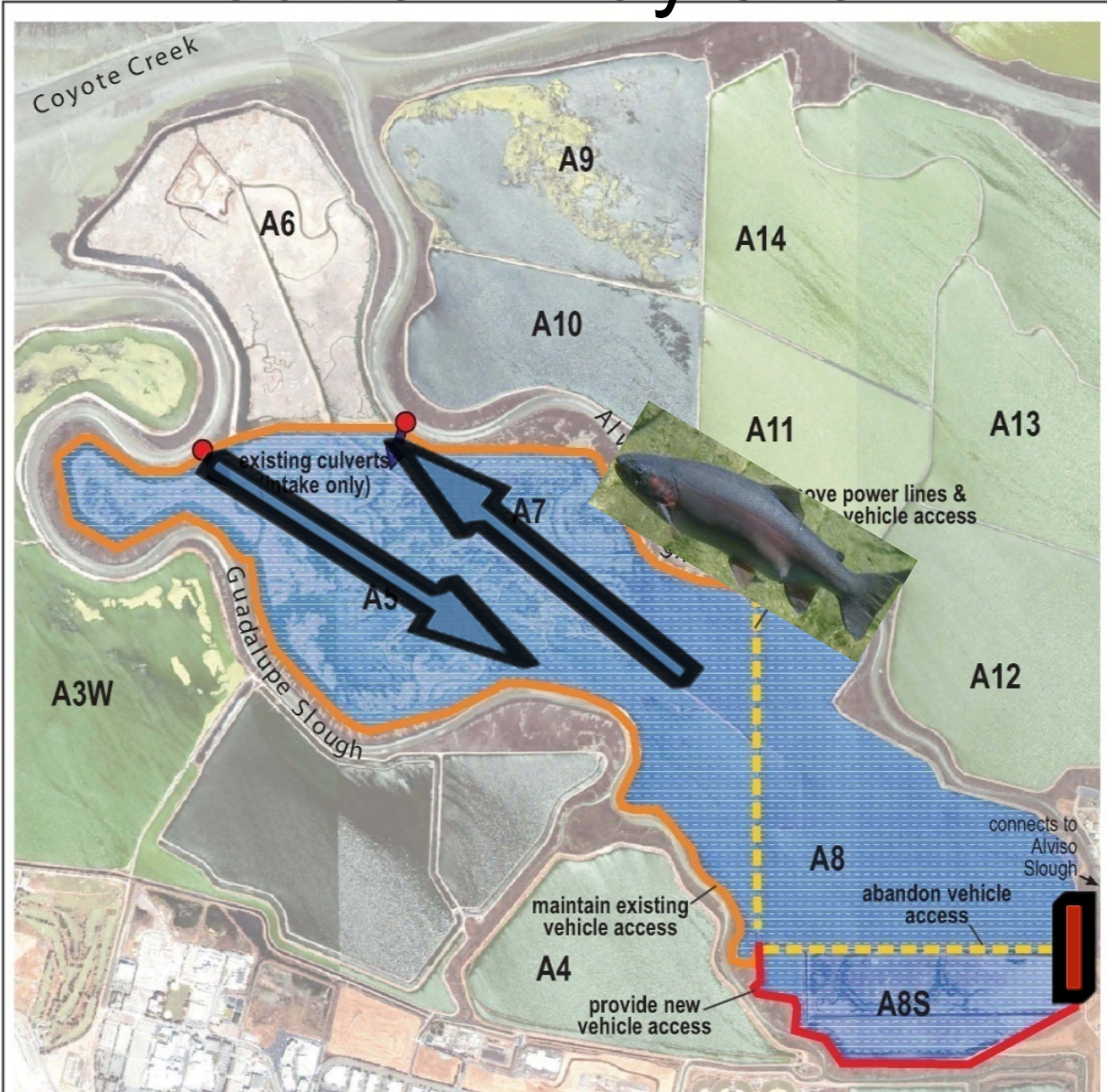


Google earth



Google earth

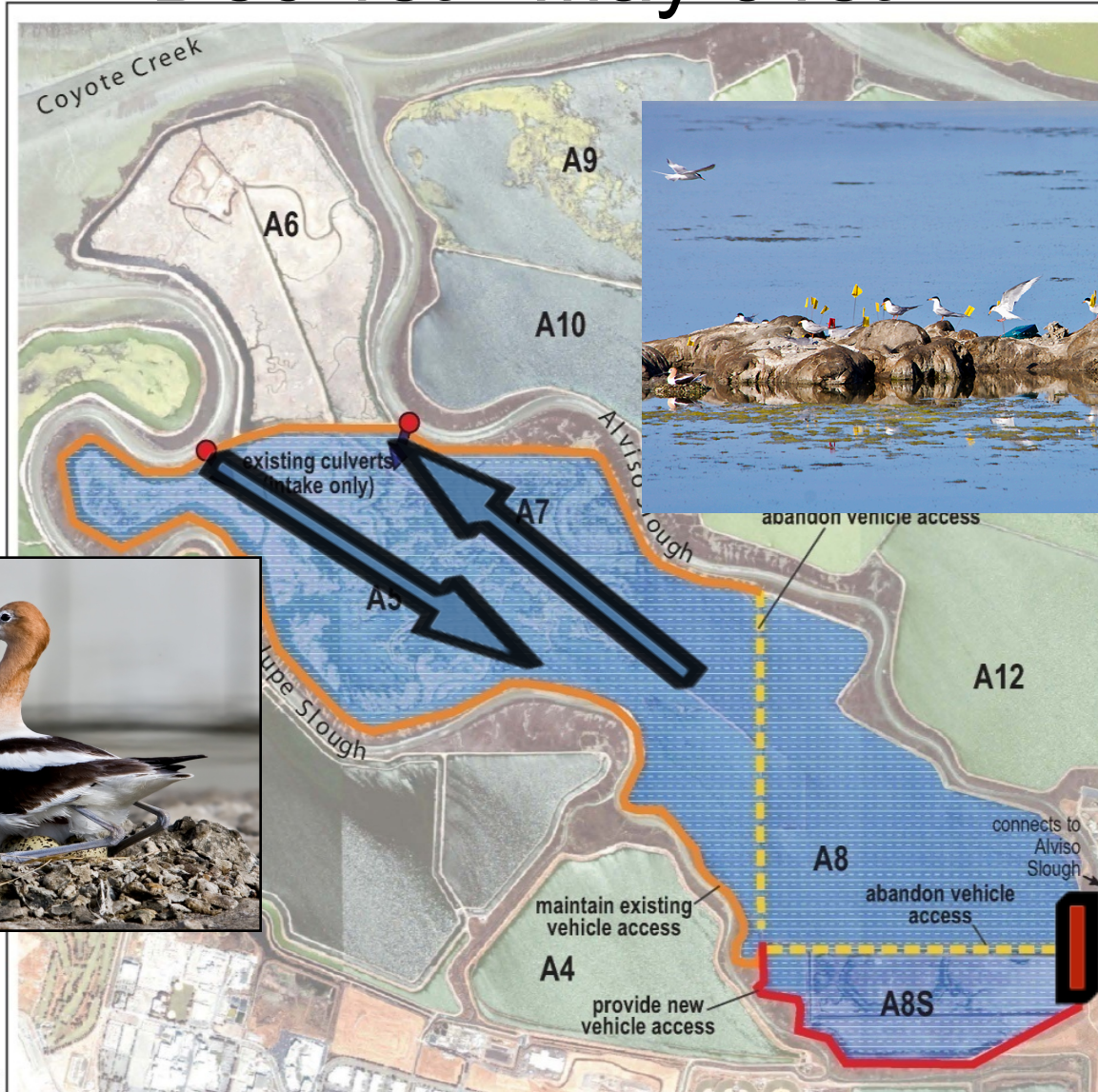
# Dec 1st - May 31st





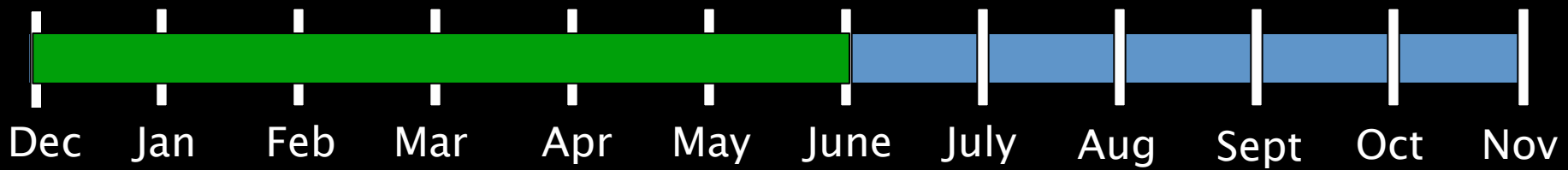
Dec Jan Feb Mar Apr May June July Aug Sept Oct Nov

# Dec 1st - May 31st



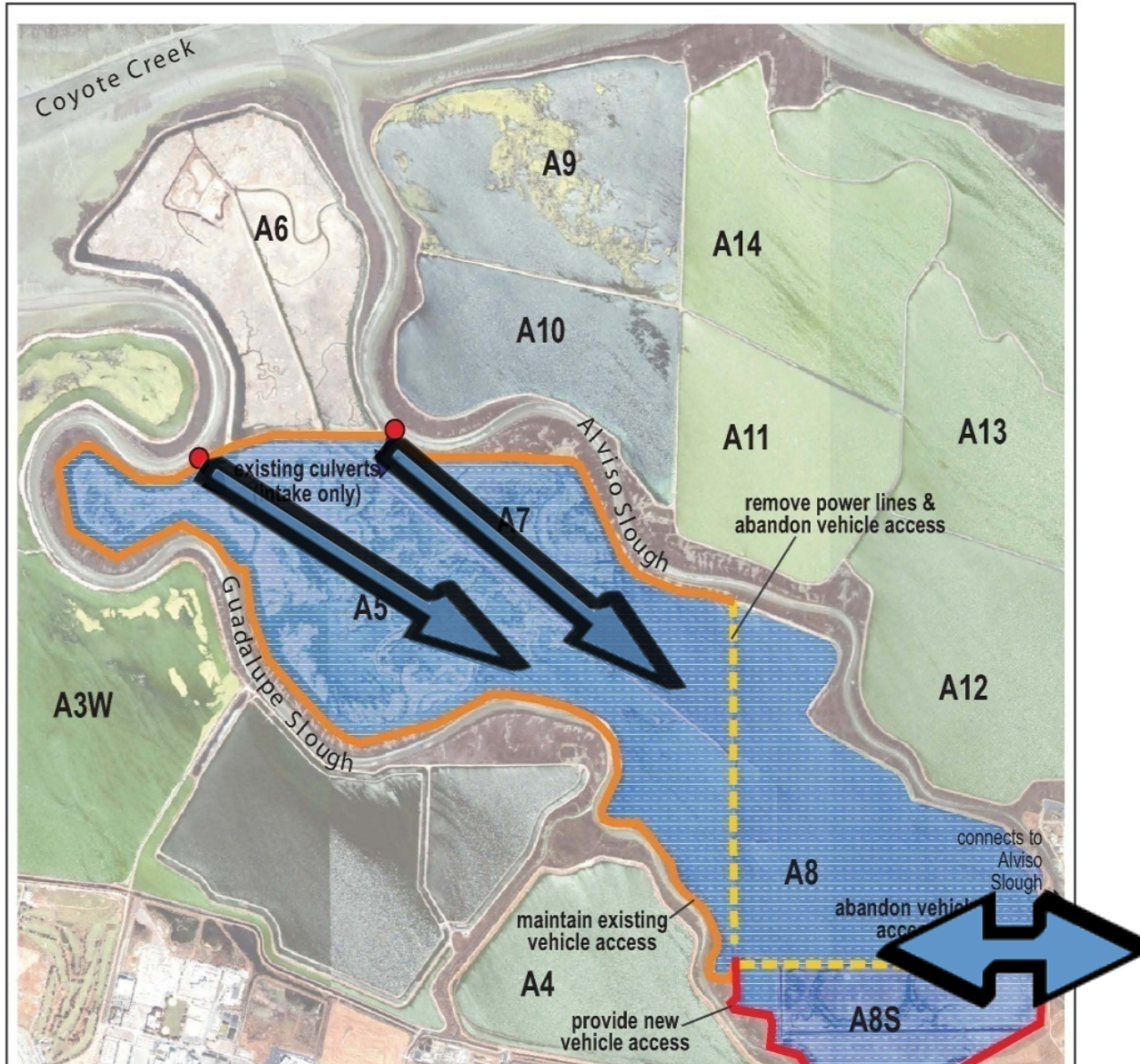
Josh Ackerman





Dec Jan Feb Mar Apr May June July Aug Sept Oct Nov

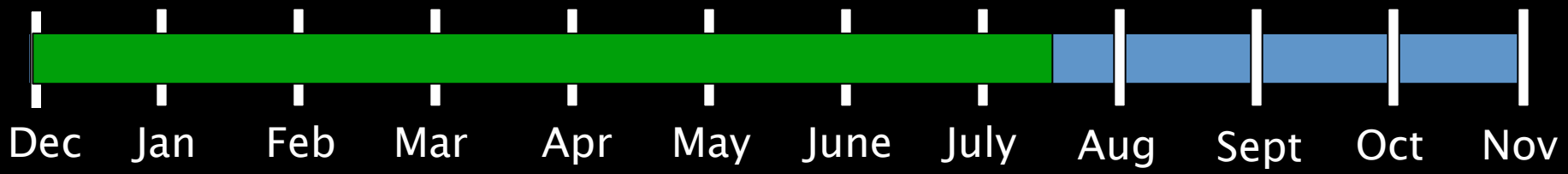
# June 1st - Nov 31st



Josh Ackerman

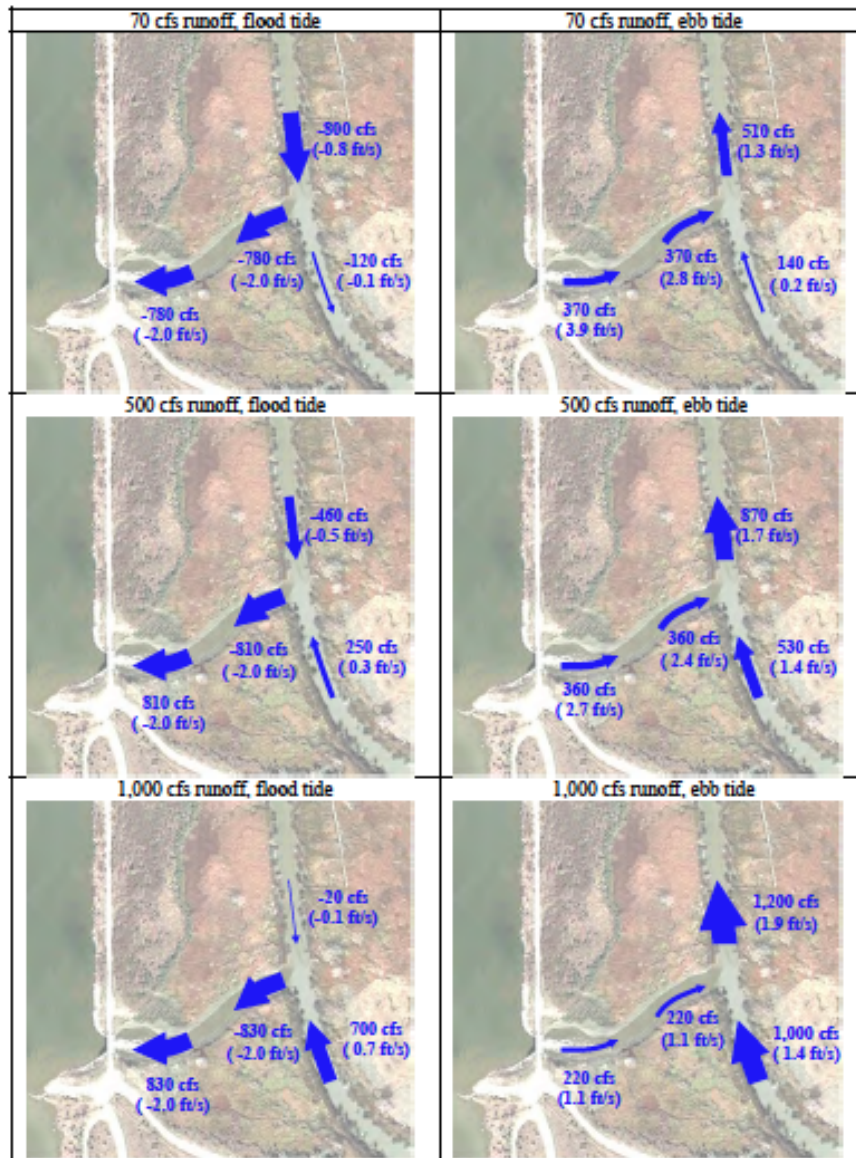






# Pond A8 Management Options

- Open prior to June 1st to improve Hg conditions and help prevent flooding of nests
- However, this is contrary to our NMFS Biological Opinion



Source: HEC-RAS model results

Scale



*figure 3*  
SBSP Phase II

Schematic of Flow Results, 70 cfs, 500 cfs, and 1,000 cfs Scenarios

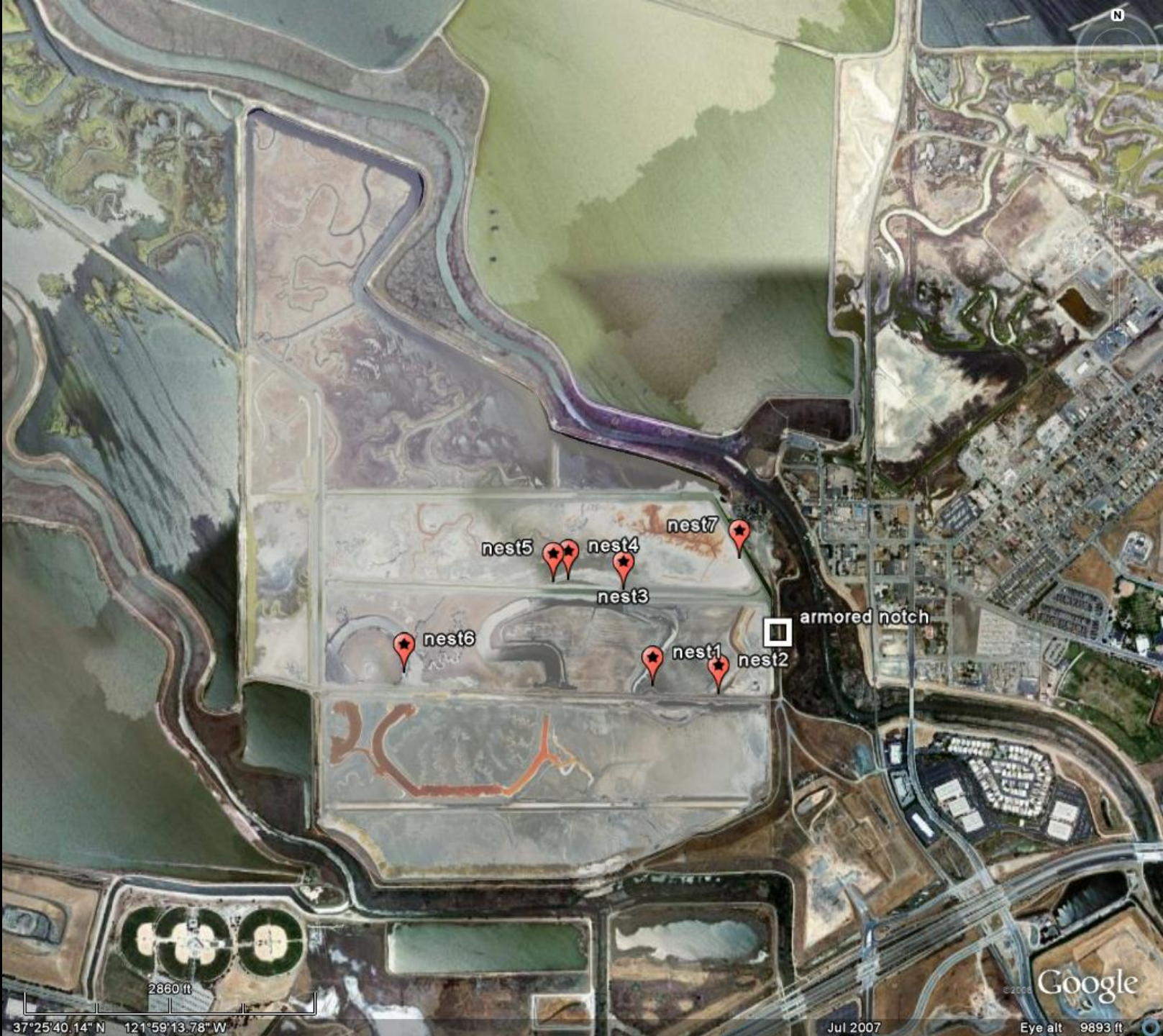


Imagery Date: 8/28/2012 37°25'40.84" N 121°59'12.09" W elev 0 m eye alt 2.66 km

Google earth



2006-7:  
location  
of nests  
on A8



37°25'40.14" N 121°59'13.78" W

Jul 2007

Eye alt 9893 ft

After



Status: Gates first opened June 1, 2011

