

DEVELOP Inventory of Vegetation Spectral Properties in the South Bay Salt Ponds: A Database for Enhancing Decision Support And Restoration Mapping



Ann K. Watson¹, Wei-Chen Hsu², Rachael Marzion², Krysti Sukita³, Eve Minkin⁴
 Science Advisors: Brian Fulfrost⁵, Liane Guild PhD⁶, Lee Johnson^{6,7}, Erin Justice⁶, Brad Lobitz^{6,7}, J.W. Skiles PhD⁶, Cindy Schmidt^{6,8}
¹East Central University, Oklahoma; ²UC Berkeley; ³Santa Clara University; ⁴Los Altos High School; ⁵Design, Community & Environment; ⁶NASA Ames Research Center; ⁷California State University Monterey Bay; ⁸San Jose State University

Objectives

- Create a spectral library of relevant vegetation
- Perform an analysis of the spectral variation between different vegetation types
- Track the historical changes in vegetation distribution from 2000 to present to assess the health and progress of the wetland restoration effort, now that levees are being breached

Study Area



Located on the southern end of San Francisco Bay are three salt pond sites currently undergoing restoration: Alviso Ponds, Edens Landing Ponds and the Ravenswood Ponds

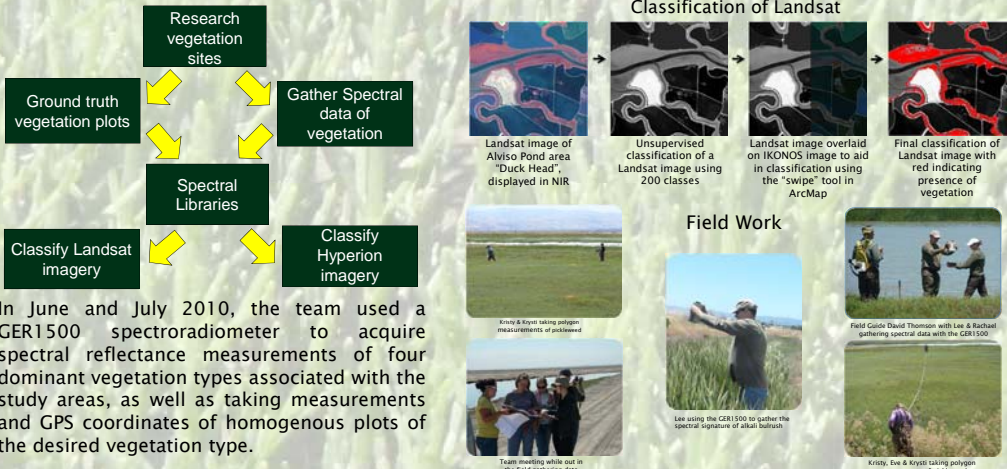
Earth Observation Sources



Introduction

In the past century, more than 85% of the historical marshlands in the San Francisco Bay were converted to salt ponds or filled for urban development with the resultant loss of biodiversity. The municipalities along the southern margin of the San Francisco Bay are in the process of one of the most extensive tidal wetland restoration projects ever undertaken, The South Bay Salt Pond Restoration Project (SBSPRP). The goal of this study was to perform an analysis of the spectral variation between different salt pond vegetation types and to track the historical changes in vegetation distribution from 2000 to present. This project has identified the specific spectral characteristics of vegetation through the use of in-situ spectral measurements and spectral un-mixing of remotely sensed imagery from EO-1 Hyperion and Landsat. These data can be used to produce a vegetation classification of imagery that will be shared with the SBSPRP partners to aid in their 3-year classification of the vegetation. Students' fieldwork in the salt ponds included the use of a handheld spectrometer to gather spectral data for image classification. Plots were classified by taking an inventory of each vegetation species within each plot. Percent cover of each species was used to perform a supervised classification and compared to an un-mixed Landsat image.

Methodology



National Application Areas and Partners

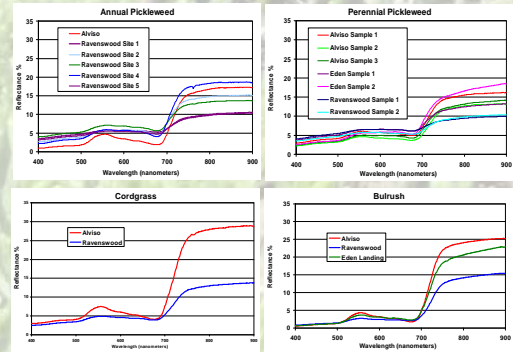


Conclusions

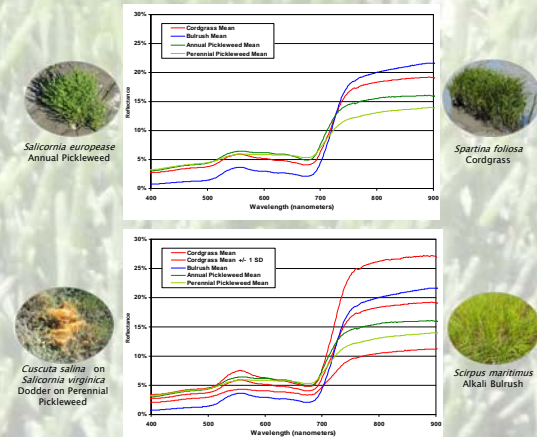
- Landsat imagery is too coarse for the distinction between the different vegetation species.
- Spectral Library of the different species was created using VIPER tools, a plug-in for ENVI.
- Hyperion imagery works with the GER1500 data, although more spectral measurements of endmembers are needed to improve the accuracy.

Results Continued

Spectral Signatures for Various Vegetation

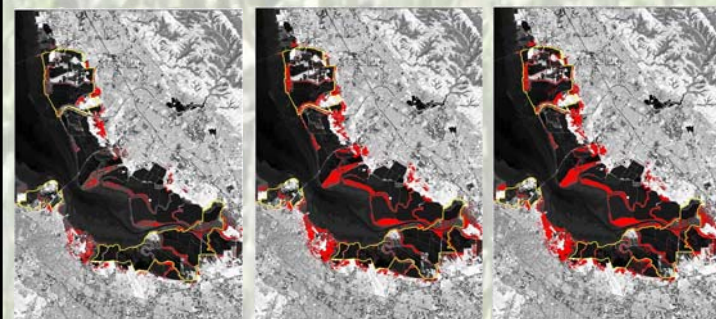


Means and Standard Deviations for Vegetation Samples



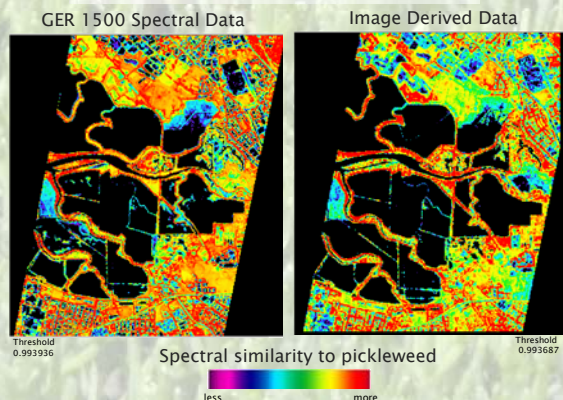
Results

Historical Vegetation Growth from 2000–2010 using Landsat TM 5 Images



Landsat is successful in illustrating the increase in overall vegetation changes in the south San Francisco Bay salt pond area over the past decade.

Classification Results using Hyperion Image



A subset image of the classified July 7th, 2010 Hyperion data showing the Alviso area using the SAM classification algorithm with spectral library constructed in ERDAS IMAGINE. The results of the SAM classification algorithm shows pickleweed in red. The classification from both the GER 1500 data and the image derived data are able to identify the occurrence of pickleweed in the Alviso area