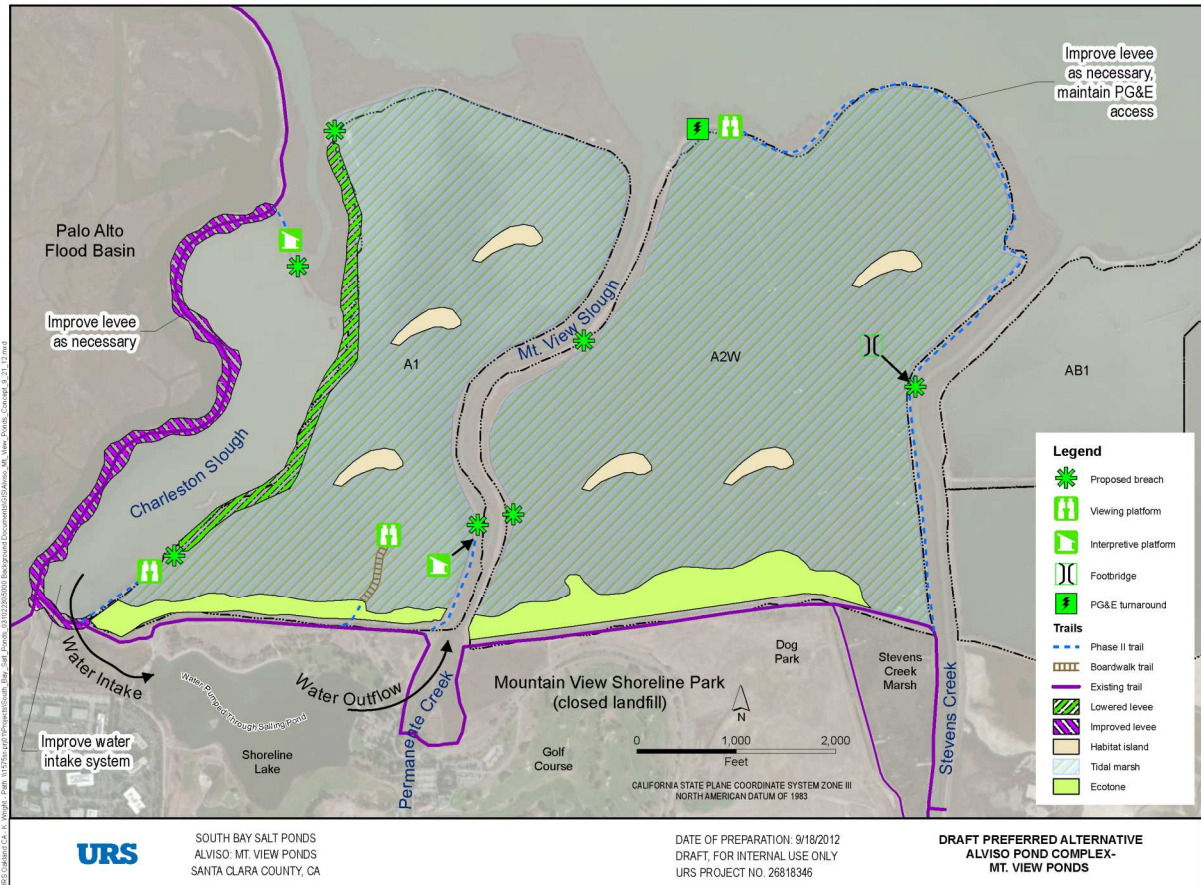


Phase 2: Alviso Handout, Stakeholder Forum/Working Groups 11-15-12 Meeting

Early Conceptual Diagram under Consideration:



Possible Phase 2 Actions:

1. Restoration:

A. Mountain View area: Ponds A1-A2W, City of Mountain View Charleston Slough.

Breach levees to restore A1 and A2W (# acres) to tidal marsh. Collaborate with the City's project to restore 56-acre Charleston Slough.

B. Island Ponds (Ponds A19, A20, A21). Consider additional breaches on north side of ponds to increase sedimentation and allow for growth of vegetation at Pond A19.

2. Public Access: Improve existing walking and biking trails and build spur trails, including a possible boardwalk trail, at A1 and A2W. Add or enhance water-based recreation at Coyote Creek and Mud Slough by the Island Ponds.

3. Habitat Enhancement: Possible construction of habitat islands and, near shore, upland transition zones (ecotones) at A1 and A2W.