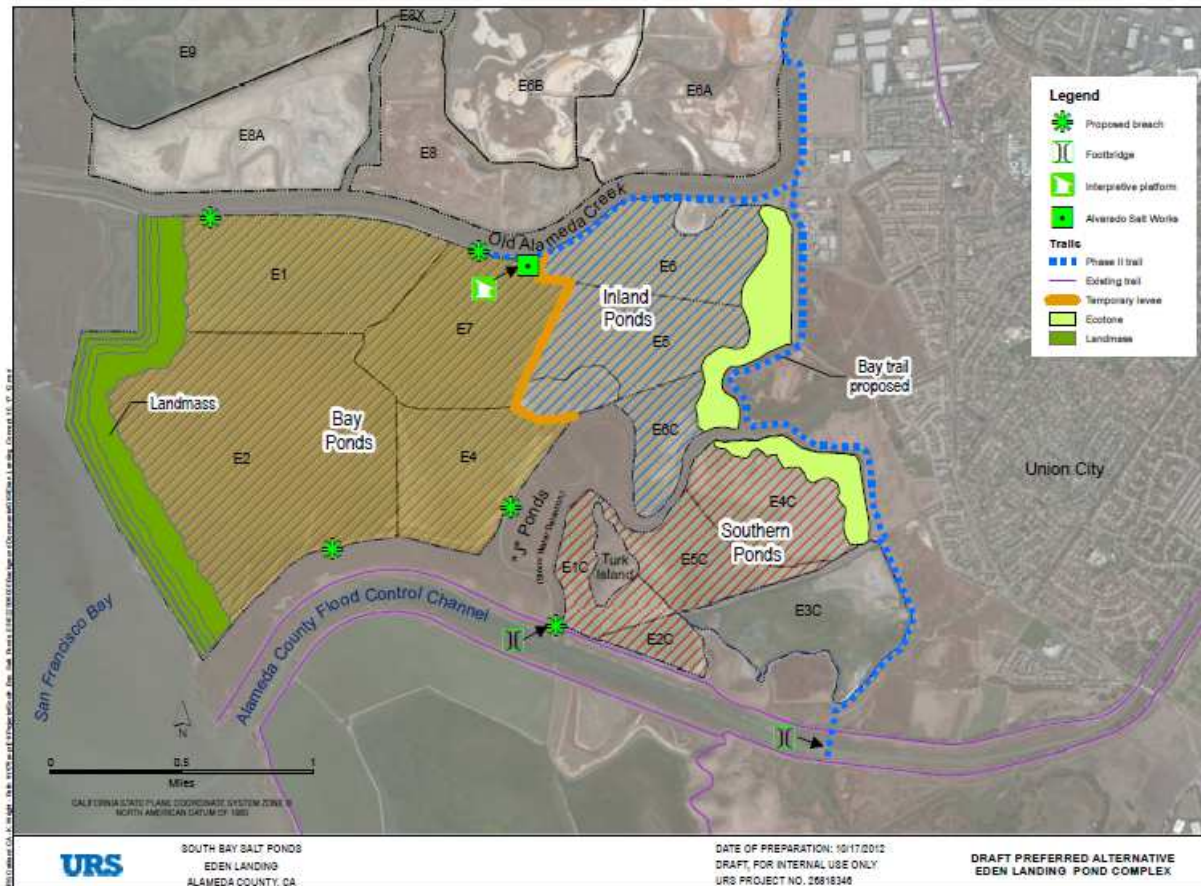


Phase 2: Eden Landing Handout, Stakeholder Forum/Working Groups 11-15-12 Meeting

Early Conceptual Diagram under Consideration:



Possible Phase 2 Actions:

1. **Restoration: Ponds E1-E7, E1C, E2C, E4C and E5C: Tidal Marsh Restoration.** The 2,500 acres of ponds are being analyzed for possible restoration in phases over time. A variety of configurations and timing are under consideration.
2. **Flood Risk Management: Alameda County Flood Control District Landmass Concept.** The District is proposing a "landmass" at least 100 feet wide on the western Bay-front edge of ponds E1-2 as a means of flood protection and to dampen tidal surges. It has the potential to provide intertidal, wetland fringe and upland habitats.
3. **Public Access:** Create new Bay Trail spurs, interpretive display at old Alvarado Saltworks, and potential construction of portions of the Bay Trail spine.
4. **Habitat Enhancement:** Possible construction of upland transition zone (ecotone) at Project's eastern edge.