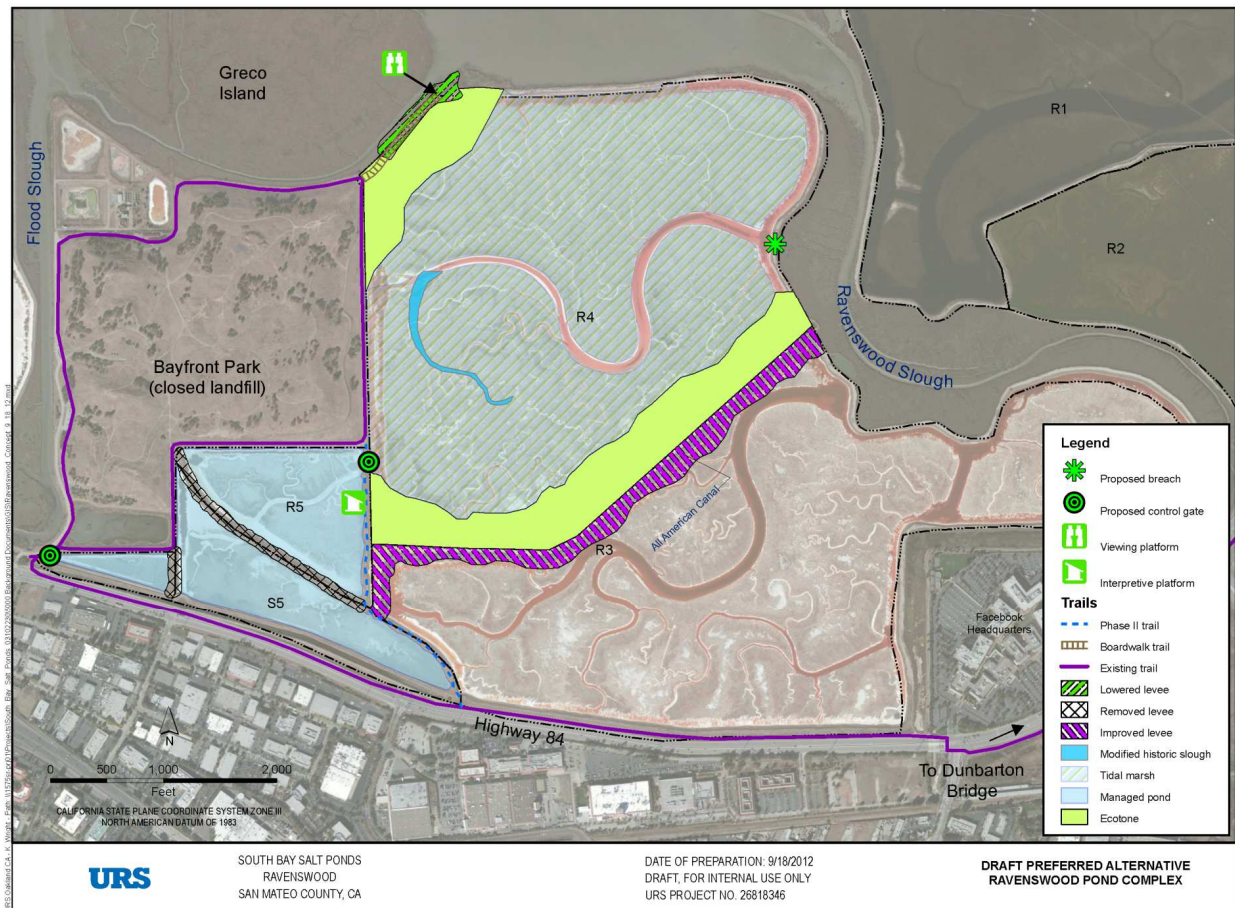


Phase 2: Ravenswood Handout, Stakeholder Forum/Working Groups 11-15-12 Meeting

Early Conceptual Diagram under Consideration:



Possible Phase 2 Actions:

1. **Restoration: Pond R4.** Possible options include breaching the levee to connect R4 to the Bay and restore most of it to tidal marsh; and to construct upland transition zones (ecotones) for refugia habitat and sea level rise adaptation.
2. **Habitat Enhancement: Ponds R5/S5.** Consider managing ponds as year-round pond habitat for shorebirds or waterfowl; and/or incorporate a rare willow glen habitat for passerines.
3. **Flood Retention: Ponds R5/S5.** Options include managing S5 as flood storage for adjacent communities.
4. **Public Access:** Create new recreational trails, such as a boardwalk spur trail off of Bayfront Park with a viewing platform; and/or between ponds R5 and R4, incorporating interpretative signage.